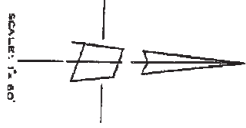
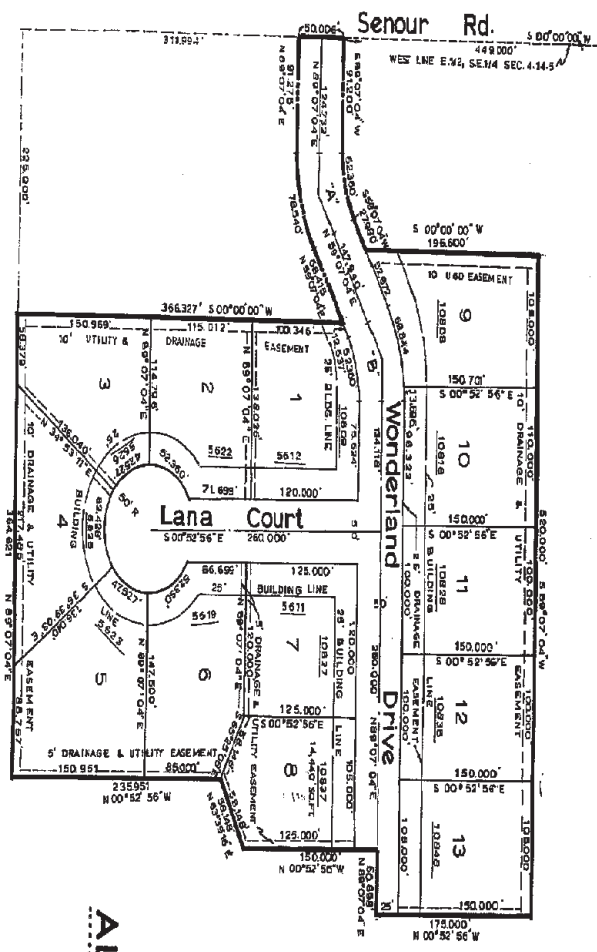


27069/79

RECEIVED FOR RECORD
1867 NOV 29 PM 3:30
CLERK OF SUPERIOR COURT
SOUTH BEND, INDIANA



CURVE	I	D	R	L	T
A	1	578.86	100.000	82.547	28.204
B	1	488.85	1.82000	66.448	23.484
C	1	261.97	190.000	78.040	10.187

ALLANGALE WOODS ADDITION
FIRST SECTION

1, the undersigned hereby certify the above plat to be true and correct, representing a subdivision of part of the East half of the Southeast quarter of Section 4, Township 14, Range 5 East, in Marion County, State of Indiana, more particularly described as follows:
Commencing at the Northwest corner of the aforementioned East 1/2 of the Southeast quarter of Section 4, Township 14, Range 5 East, in Marion County, State of Indiana, and running thence S 07°00'00\"/>

The undersigned owners of the above described real estate, hereby certify that they do hereby reserve for the use of public utilities, not including telephone lines, electric power lines, gas lines, water lines, sewer lines, drainage lines, and other utility lines, easements, and rights of way, subject to the provisions of this plat, and that the public utilities, not including telephone lines, electric power lines, gas lines, water lines, sewer lines, drainage lines, and other utility lines, easements, and rights of way, shall be installed, maintained, and operated in accordance with this plat and certificate. The streets, if not heretofore dedicated, are dedicated as shown on this plat, and the easements, and rights of way, are hereby reserved for the use of public utilities, not including telephone lines, electric power lines, gas lines, water lines, sewer lines, drainage lines, and other utility lines, easements, and rights of way, subject to the provisions of this plat, and that the public utilities, not including telephone lines, electric power lines, gas lines, water lines, sewer lines, drainage lines, and other utility lines, easements, and rights of way, shall be installed, maintained, and operated in accordance with this plat and certificate.

Certified This 19th Day of November, 1967
MID-STATES ENGINEERING COMPANY INC.
STATE ENGINEERS AND SURVEYORS
SOUTH BEND, INDIANA

