

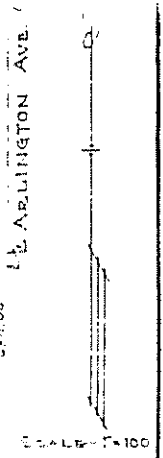
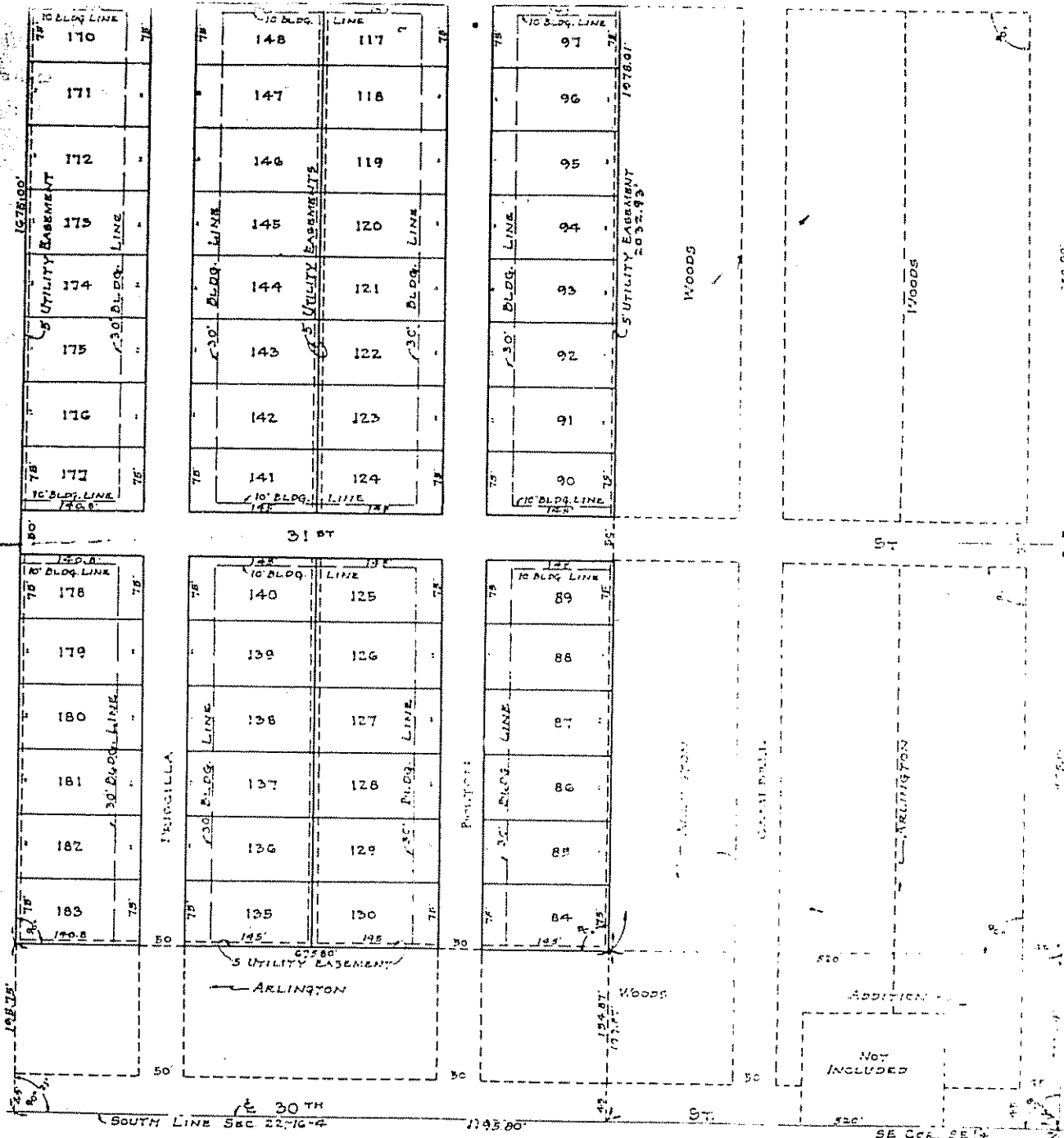
ARLINGTON WOODS — 3RD SECTION

AN ADDITION TO THE CITY OF INDIANAPOLIS

BN 30947

The undersigned, Mutual Realty Corporation, an Indiana corporation, do hereby certify that the plat and subdivision map shown on the reverse hereof is a true and correct copy of the original plat and subdivision map as the same appears on file in the office of the City Engineer of the City of Indianapolis, Indiana, and that the same has been approved by the City Engineer of the City of Indianapolis, Indiana, and that the same is a true and correct copy of the original plat and subdivision map as the same appears on file in the office of the City Engineer of the City of Indianapolis, Indiana, and that the same has been approved by the City Engineer of the City of Indianapolis, Indiana.

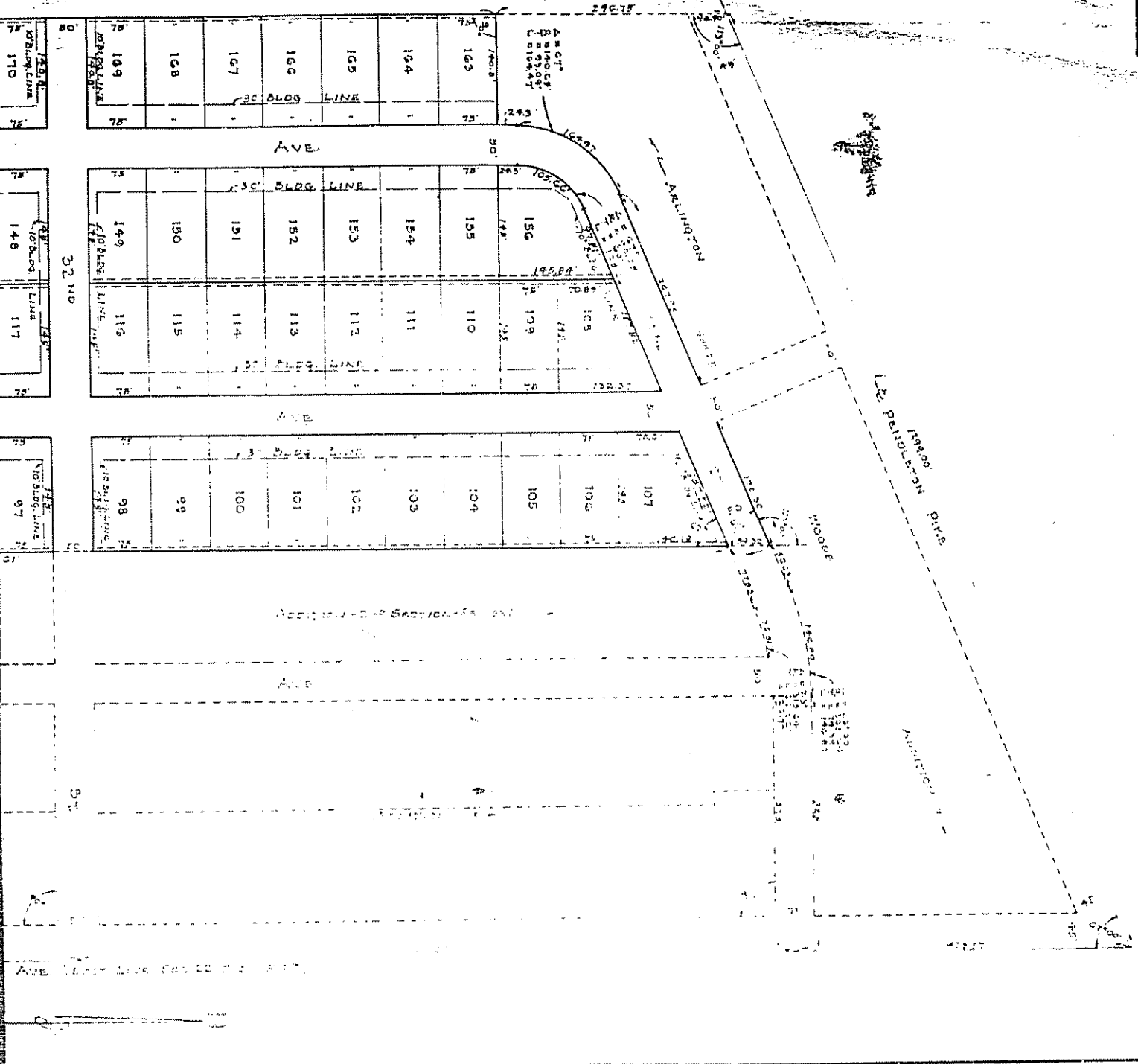
THE UNDERSIGNED, Mutual Realty Corporation, an Indiana corporation, do hereby certify that the plat and subdivision map shown on the reverse hereof is a true and correct copy of the original plat and subdivision map as the same appears on file in the office of the City Engineer of the City of Indianapolis, Indiana, and that the same has been approved by the City Engineer of the City of Indianapolis, Indiana, and that the same is a true and correct copy of the original plat and subdivision map as the same appears on file in the office of the City Engineer of the City of Indianapolis, Indiana, and that the same has been approved by the City Engineer of the City of Indianapolis, Indiana.



SE COR. SEC 22
 SEC 22 T12N R4E
 (BRASS PLUG)

PA 571
 110

NO



Page 1

49