

65979



SCALE = 1" = 60'

| Curve | I       | D       | R       | L       | T       |
|-------|---------|---------|---------|---------|---------|
| A     | 45° 19' | 13° 21' | 18.01'  | 61.10'  | 32.57'  |
| B     | 45° 19' | 44° 46' | 128.01' | 101.24' | 53.44'  |
| C     | 20° 30' | 23° 16' | 246.20' | 88.08'  | 44.52'  |
| D     | 20° 30' | 29° 12' | 196.20' | 10.19'  | 35.48'  |
| E     | 61° 56' | 36° 29' | 151.06' | 163.16' | 94.25'  |
| F     | 61° 56' | 27° 40' | 207.06' | 223.80' | 124.25' |
| G     | 34° 30' | 20° 45' | 216.20' | 166.80' | 85.16'  |
| H     | 34° 30' | 25° 20' | 226.20' | 136.19' | 10.24'  |
| I     | 38° 28' | 21° 54' | 261.62' | 115.63' | 91.26'  |

CURVE DATA



(NOT INCLUDED IN PLAT)

BLOCK "B" (NOT INCLUDED IN PLAT)

BLOCK "A" (NOT INCLUDED IN PLAT)

SEC. 33-18-4 NW 1/4

SEC. 33-15-4 SW 1/4

659779

VOL. 30

Page 11

NW COR. SW 1/4 NW 1/4  
SEC. 33-15-4



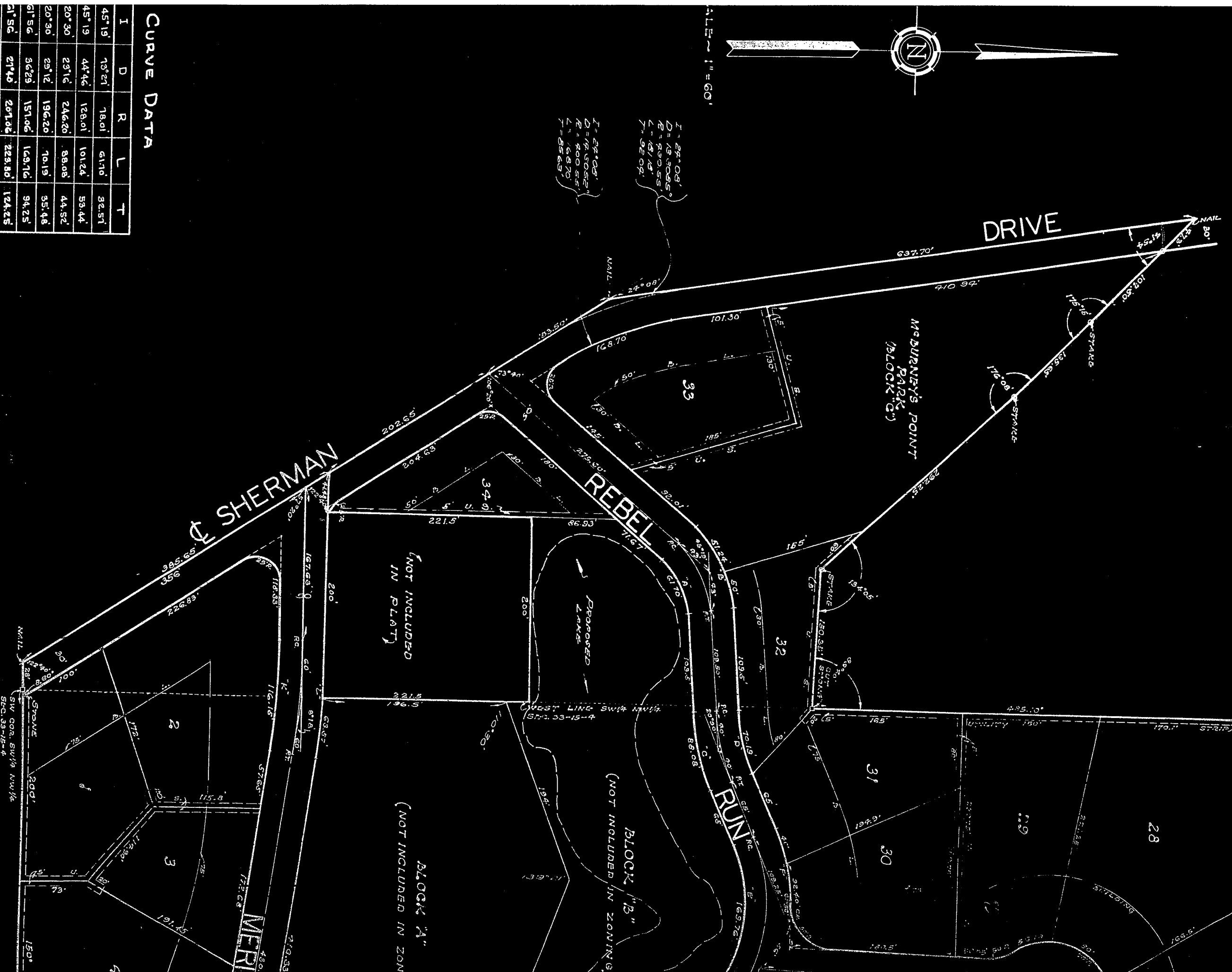
SCALE - 1" = 60'

$I = 22^{\circ} 08'$   
 $D = 133.085'$   
 $R = 220.55'$   
 $L = 187.15'$   
 $T = 92.09'$

$I = 22^{\circ} 08'$   
 $D = 124.5052'$   
 $R = 200.55'$   
 $L = 168.70'$   
 $T = 85.63'$

**CURVE DATA**

| I       | D       | R      | L      | T      |
|---------|---------|--------|--------|--------|
| 45° 19' | 13° 21' | 18.01  | 61.10  | 32.51  |
| 45° 19' | 44° 46' | 128.01 | 101.24 | 53.44  |
| 20° 30' | 23° 16' | 246.20 | 88.08  | 44.52  |
| 20° 30' | 29° 12' | 196.20 | 10.19  | 35.48  |
| 61° 56' | 36° 23' | 151.06 | 169.16 | 94.25  |
| 21° 56' | 21° 40' | 201.06 | 223.80 | 124.25 |
| 34° 30' | 20° 45' | 216.20 | 166.90 | 85.16  |
| 34° 30' | 25° 20' | 226.20 | 136.19 | 10.24  |
| 38° 24' | 21° 54' | 221.62 | 115.63 | 91.28  |



MARKET LINE SW 1/4 NW 1/4 SEC 34-4



SOUTH LINE SW 1/4 NW 1/4 SEC 33-15-4





