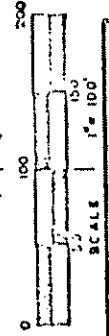
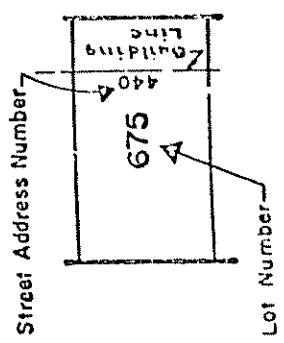
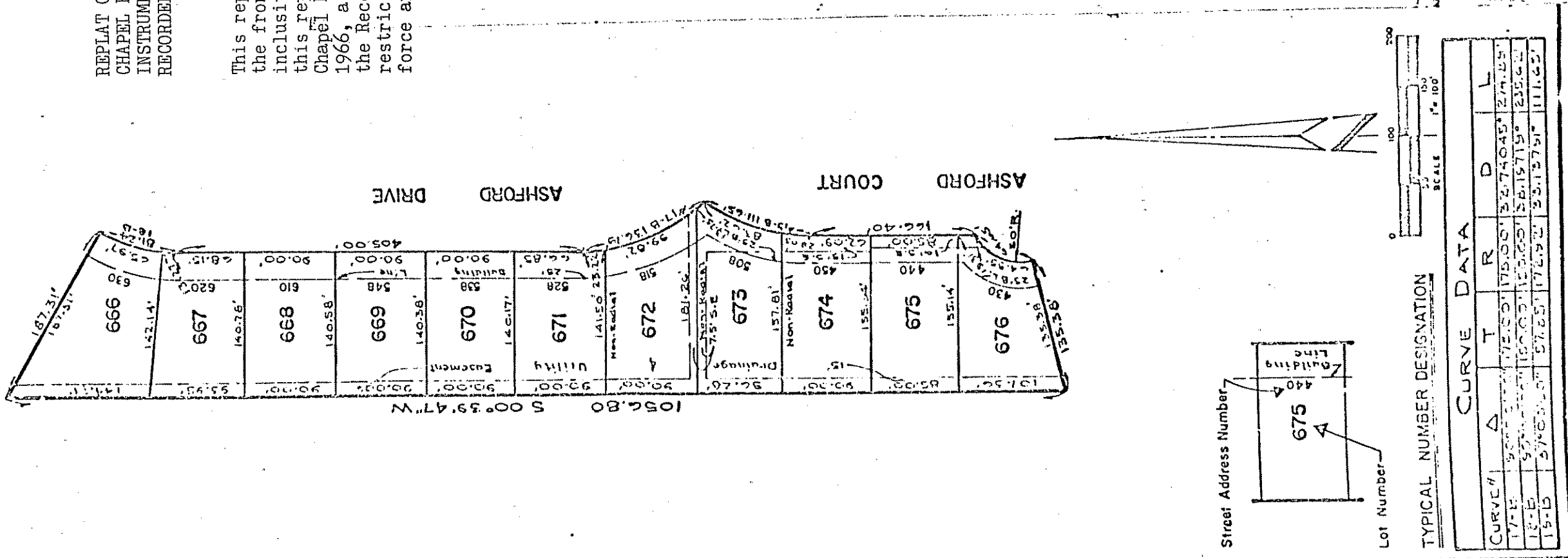


REPLAT OF LOTS 666 THRU 676  
 CHAPEL HILL - TWELFTH SECTION  
 INSTRUMENT #67-29726  
 RECORDED JULY 5, 1967

This replat is for the sole purpose of changing the front building line on Lots #666 through #676, inclusive, from 40 feet to 25 feet. Otherwise this replat is identical to the original plat of Chapel Hill-Twelfth Section, recorded November 14, 1966, as Instrument #66-57925, in the office of the Recorder of Marion County, Indiana, and all restrictions therein contained shall remain in full force and effect.



TYPICAL NUMBER DESIGNATION

CURVE DATA				
CURVE	Δ	T	R	D L
17-E	90°00'00"	175.00'	175.00'	32.74045' 274.25'
18-B	90°00'00"	150.00'	150.00'	28.15719' 235.62'
19-D	90°00'00"	57.85'	172.92'	23.13791' 111.65'