

PREPARED FOR:
 BAY DEVELOPMENT CORP.
 10505 NORTH COLLEGE AVENUE
 INDIANAPOLIS, IN 46280
 TELEPHONE: (317) 844-8844

PREPARED BY:
 WEHE ENGINEERS, INC.
 10505 NORTH COLLEGE AVENUE
 INDIANAPOLIS, INDIANA 46280
 TELEPHONE: (317) 846-6811

HAZEL DELL WOODS

SECTION 1

SECONDARY PLAT

2000004333
 2000001323
 2000001324
 2000001325
 2000001326
 2000001327
 2000001328
 2000001329
 2000001330
 2000001331
 2000001332
 2000001333
 2000001334
 2000001335
 2000001336
 2000001337
 2000001338
 2000001339
 2000001340
 2000001341
 2000001342
 2000001343
 2000001344
 2000001345
 2000001346
 2000001347
 2000001348
 2000001349
 2000001350
 2000001351
 2000001352
 2000001353
 2000001354
 2000001355
 2000001356
 2000001357
 2000001358
 2000001359
 2000001360
 2000001361
 2000001362
 2000001363
 2000001364
 2000001365
 2000001366
 2000001367
 2000001368
 2000001369
 2000001370
 2000001371
 2000001372
 2000001373
 2000001374
 2000001375
 2000001376
 2000001377
 2000001378
 2000001379
 2000001380
 2000001381
 2000001382
 2000001383
 2000001384
 2000001385
 2000001386
 2000001387
 2000001388
 2000001389
 2000001390
 2000001391
 2000001392
 2000001393
 2000001394
 2000001395
 2000001396
 2000001397
 2000001398
 2000001399
 2000001400

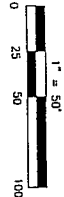
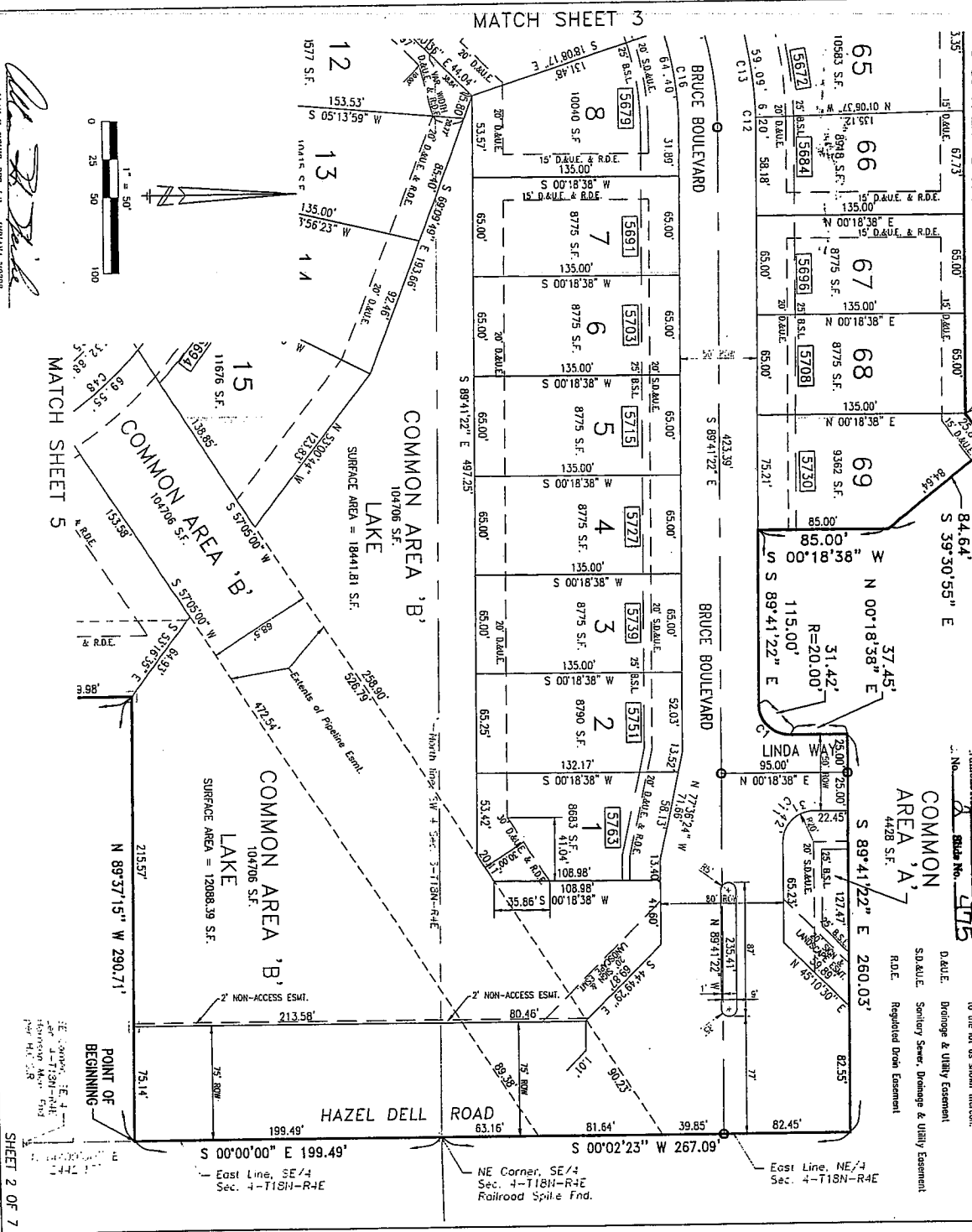
Legend

- represents a Concrete Monument Set during final stages of construction.
- represents 5/8" Rebar w/ Aluminum Cap set in place of monument and the point of beginning of street centerlines and cut-off-cur radius points.
- represents the street address assigned to the lot as shown thereon.

COMMON AREA 'A'
 4428 S.F.

COMMON AREA 'B'
 115,000 S.F.

MATCH SHEET 3



ALLAN H. WEHE, REG. L.S. - INDIANA 30038

PREPARED FOR:
 BAY DEVELOPMENT CORP.
 10415 45th COLLEGE AVE.
 INDIANAPOLIS, INDIANA 46220
 TELEPHONE: (317) 844-8944

PREPARED BY:
 WEHE ENGINEERS, INC.
 10505 NORTH COLLEGE AVENUE
 INDIANAPOLIS, INDIANA 46280
 TELEPHONE: (317) 846-8611

Alan H. Wehe, P.E.
 ALAN H. WEHE, P.E., L.S. - INDIANA 40359

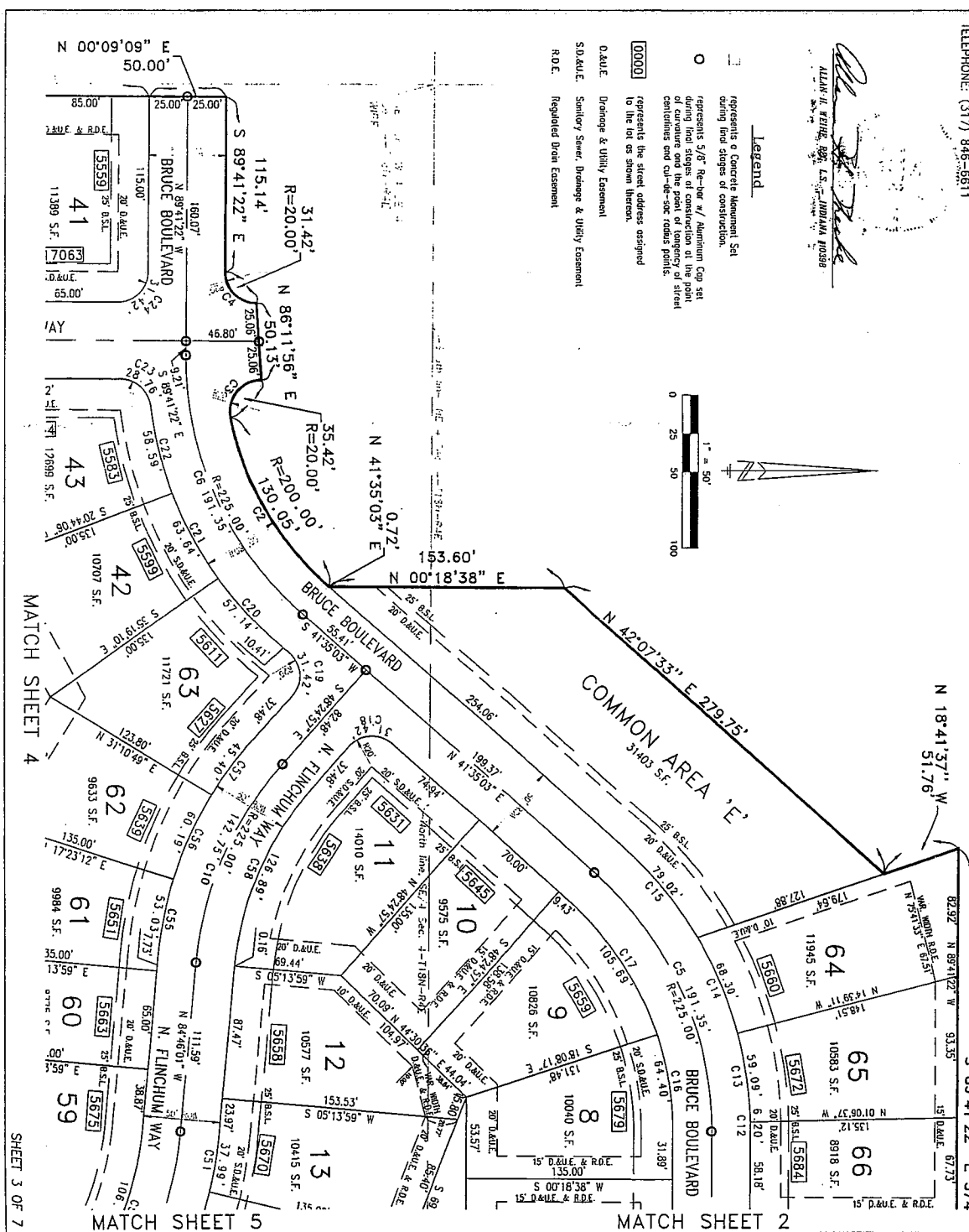
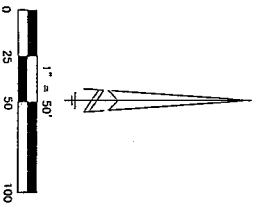
HAZEL DELL WOODS

SECTION 1 SECONDARY PLAT

Instrument No. **20000042324**
 P.C. No. **2** Sida No. **475**
 20000042324
 HAZEL DELL WOODS
 HARRIS COUNTY, INDIANA
 HENRY L. CLARK
 P.L. 09-31-2000 RE 09:55 a.m.
 46.00

Legend

- represents a Concrete Monument Set during final stages of construction.
- represents 3/8" Re-bar w/ Aluminum Cap set during final stages of construction at the point of curvature and the point of tangency of street centerlines and cut-re-sect radius points.
- represents the street address assigned to the lot as shown thereon.
- D.A.U.E. Drainage & Utility Easement
- S.D.A.U.E. Sanitary Sewer, Drainage & Utility Easement
- R.O.E. Regulated Open Easement



MATCH SHEET 4

SHEET 3 OF 7

MATCH SHEET 5

MATCH SHEET 2

PREPARED FOR:
 EBY DEVELOPMENT CORP.
 10415 N. COLLEGE AVE.
 INDIANAPOLIS, IN 46280

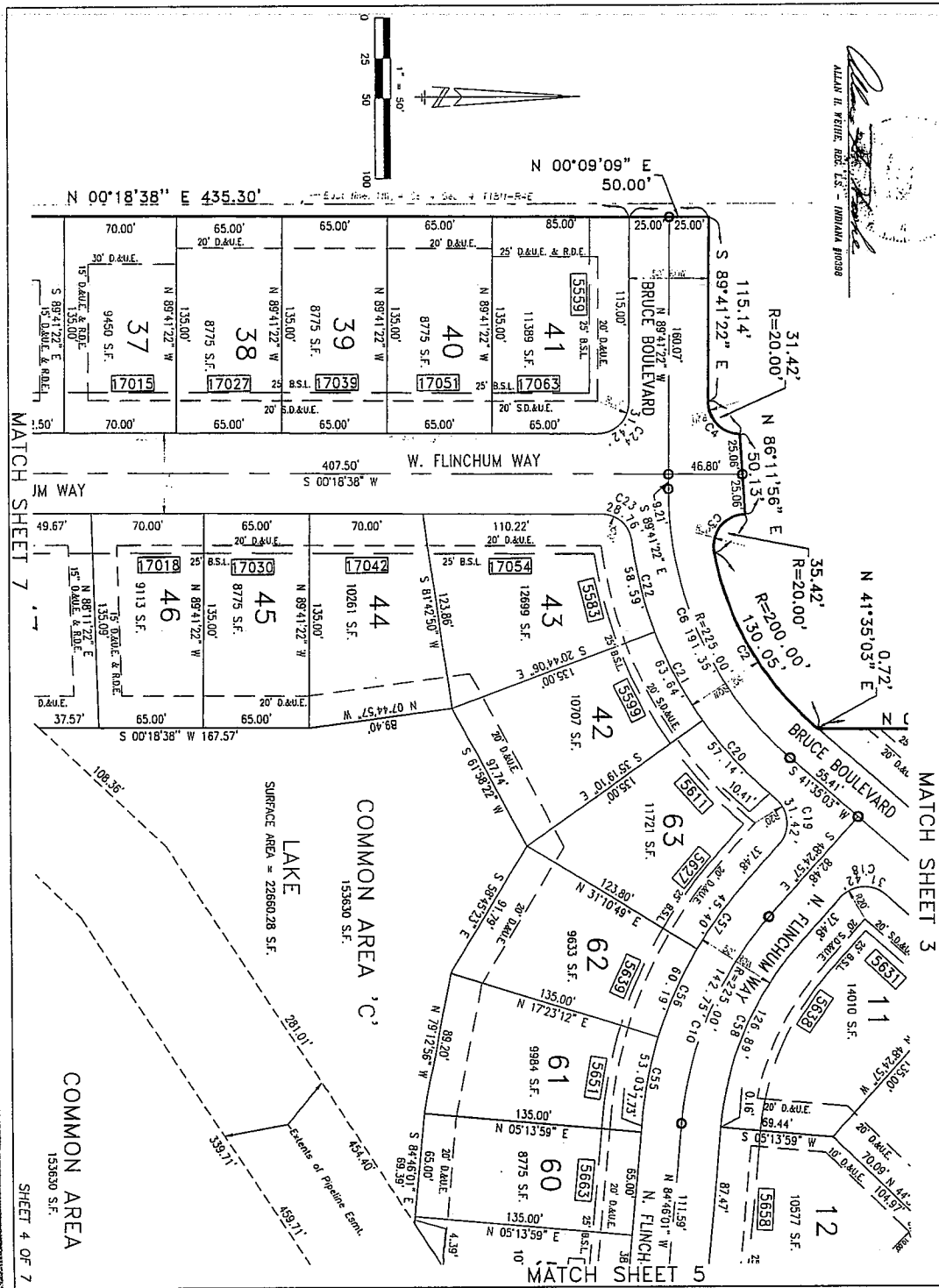
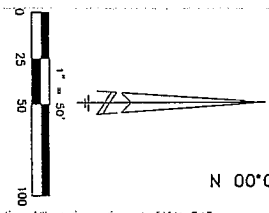
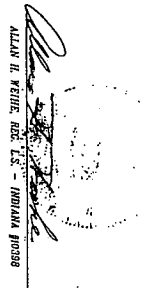
PREPARED BY:
 WEINE ENGINEERS, INC.
 10505 NORTH COLLEGE AVENUE
 INDIANAPOLIS, INDIANA 46290
 TELEPHONE: (317) 848-6611

HAZEL DELL WOODS SECTION 1 SECONDARY PLAT

Project No. **200004831**
 Sub No. **475**

20000043374
 Filed for Record 1st Indiana
 Hamilton County, Indiana
 On 08-31-2000 at 09:55 a.m.
 Plat

- Legend**
- represents a Concrete Monument Set
 - during final stages of construction
 - represents 5/8" Re-bar w/ Aluminum Cap set at center and the point of tangency of street centerlines and cut-de-sac radius points.
 - represents the street address assigned to the lot as shown thereon.
 - 0000** Drainage & Utility Easement
 - 0000** Sanitary Sewer, Drainage & Utility Easement
 - 0000** Regulated Drain Easement



MATCH SHEET 7

MATCH SHEET 3

MATCH SHEET 5

SHEET 4 OF 7

HAZEL DELL WOODS SECTION 1 SECONDARY PLAT

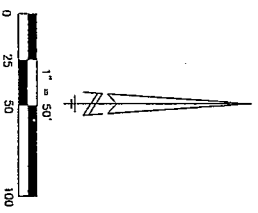
P0000043284
Record 10
HAMILTON COUNTY, INDIANA
KERRY L. CLARK
PLAT # 03-51-2000
48.00
48.56 a.s.

Number By 20000043284
SHEET No. 475

ALLAN H. VEITZ, REG. L.S. - INDIANA #0038

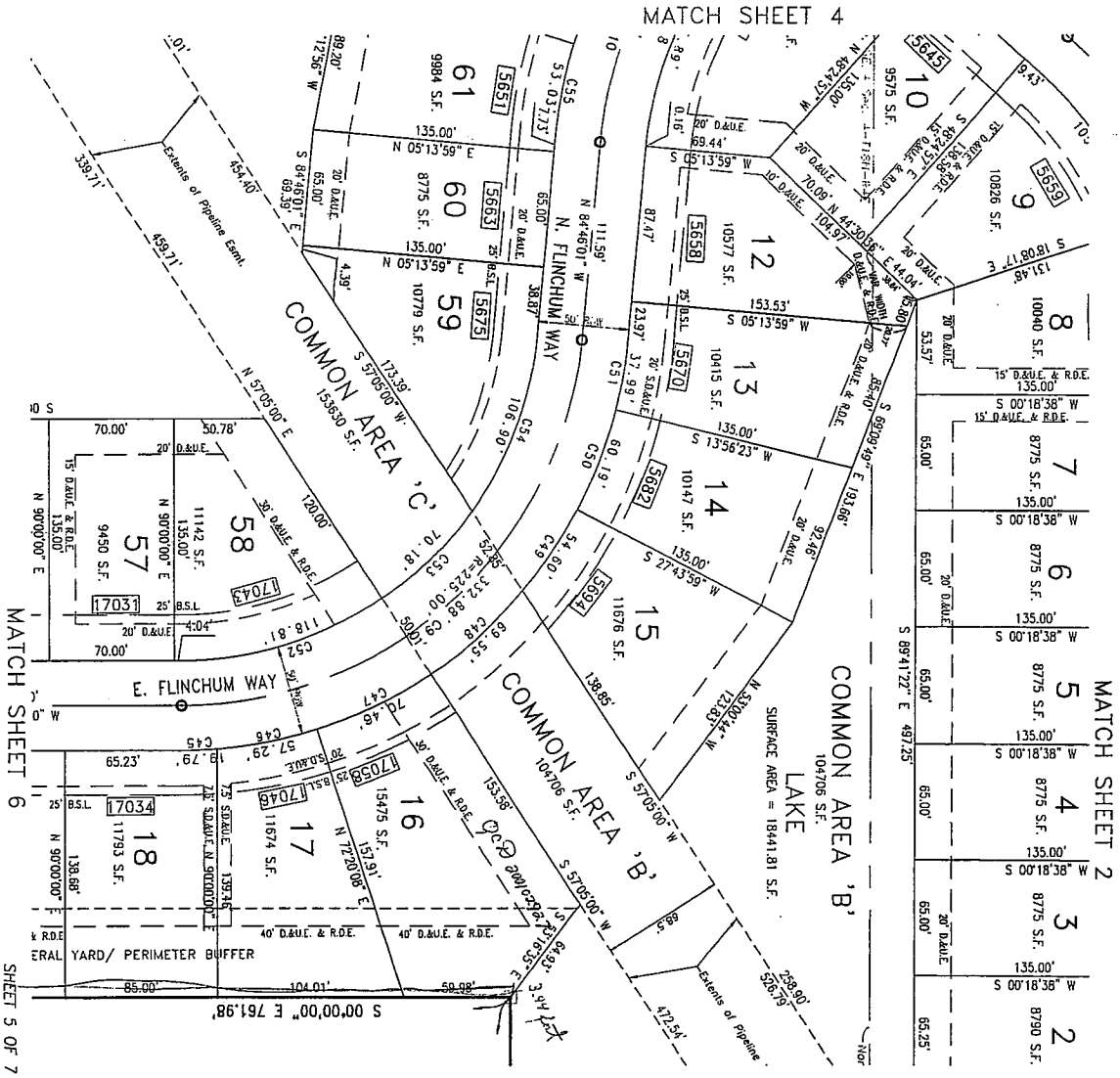
Legend

- represents a Concrete Monument Set during final stages of construction.
- represents 5/8" Rebar w/ Aluminum Cap set during final stages of construction at the point of curvature and the point of tangency of street centerlines and cut-draw radius points.
- 0000 represents the street address assigned to the lot as shown thereon.
- D.&U.E. Drainage & Utility Easement
- S.D.&U.E. Sanitary Sewer, Drainage & Utility Easement
- R.O.E. Regulated Drain Easement



PREPARED FOR:
BANK OF AMERICA
10415 N. COLLEGE AVE.
INDIANAPOLIS, IN 46280
TELEPHONE: (317) 844-8844

PREPARED BY:
WEIHE ENGINEERS, INC.
10505 NORTH COLLEGE AVENUE
INDIANAPOLIS, INDIANA 46280
TELEPHONE: (317) 846-6811



HAZEL DELL WOODS SECTION 1 SECONDARY PLAT

ALAN H. REHR, REG. L.S. - INDIANA 10389

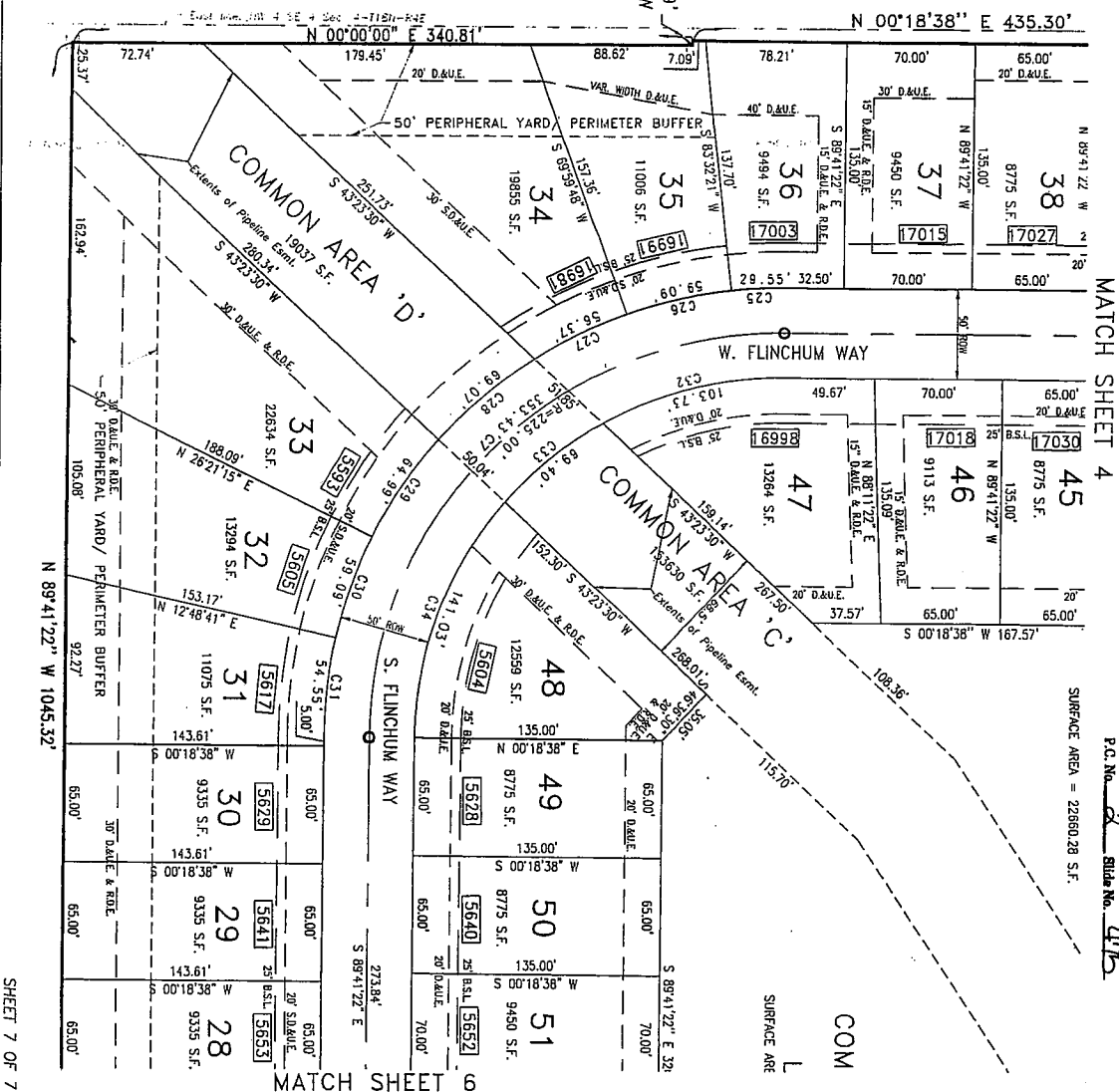
- Legend**
- represents a Concrete Monument Set during final stages of construction.
 - represents 5/8" Rebar w/ Aluminum Cap set during final stages of construction at the point of curvature and the point of tangency of street centerline and curbside-sidewalk points.
 - 00000 represents the street address assigned to the lot as shown thereon.

D.&L.E. Drainage & Utility Easement
S.D.&L.E. Sanitary Sewer, Drainage & Utility Easement
R.O.E. Regulated Drain Easement



PREPARED FOR:
BAY DEVELOPMENT
CORP.
10445 N. COLLEGE AVE.
INDIANAPOLIS, IN 46280
TELEPHONE: (317) 844-8844

PREPARED BY:
WEHE ENGINEERS, INC.
10505 NORTH COLLEGE AVENUE
INDIANAPOLIS, IN 46280
TELEPHONE: (317) 846-8811



RECORDED BY: **10000043324**
FILED FOR RECORD IN
HENRY COUNTY, INDIANA
ON 08-31-2000 AT 08:56 AM.
PLAT 48.00

P.C. No. **2000043324**
S.D. No. **475**