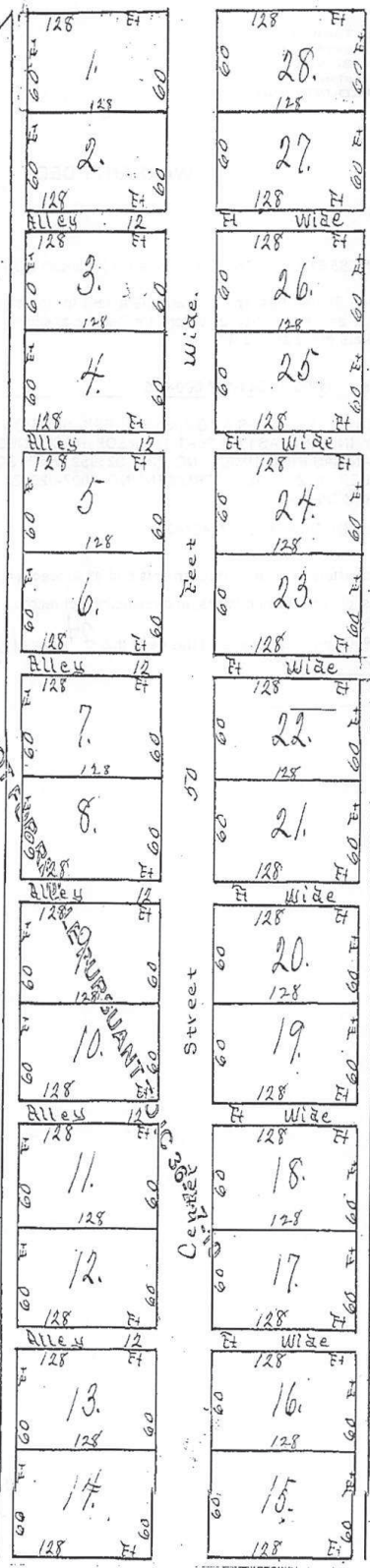


IMAGE COPY PROPERTY OF JOHNSON COUNTY, IN, FOR LICENSEE ONLY. NOT FOR REPRODUCTION  
Williamsburg Road

North

South Street



West

East

Scale 60 Ft to the Inch

South

Adopted by Resolution 17, 50 June 589  
An license to be recorded in map 63 pg. 975

A-276 I John Traub, of Johnson County State of Indiana, do hereby Plat and lay off into lots, Streets and Alleys, as shown, represented and designated in the above and foregoing Plat, the following described real estate in Johnson County State of Indiana to-wit: Block number one-1 and part of Block number three-3 in Charles Bronson's addition to the City of Franklin, said part of said Block number three being described as follows: beginning at the South West corner of said Block No-1 thence south on the West line of said Block No-3 sixteen rods, thence east twenty rods, thence north sixteen Rods to the South East corner of Block number one, thence West twenty rods to the Beginning.

Said addition or Plat is Platted and laid off as an addition to the City of Franklin, Ind. and shall be known and is hereby designated as John Traub's Subdivision of Block one and part of Block three of Charles Bronson's addition to the City of Franklin. The lots in this addition are numbered from No 1 to No 28 inclusive and are marked by the proper number in figures, on said Plat, the number of each lot being written in figures thereon, each lot in said Plat is one hundred and twenty eight feet long, and sixty feet wide, except lots No-14 and 15 which are fifty eight wide more or less, as shown on said Plat, the width of the Street and Alley are marked and shown on said Plat.

John Traub,  
Adelheid Traub.

State of Indiana Johnson County, ss:  
Before me the undersigned Notary Public within and for said County Personally came John Traub and Adelheid Traub, his wife and acknowledged the above and foregoing Plat for the uses and purposes therein mentioned.  
Witness my hand and official seal this 3<sup>rd</sup> day of September 1885;

Wm. J. Brilchard,

Franklin Ind September 9<sup>th</sup> 1885.

Edward Baney, Clerk of the City of Franklin, Johnson County, Indiana, do hereby certify that the Plat known and designated as John Traub's Subdivision of Block one and part of Block three of Charles Bronson's addition to the City of Franklin Indiana was presented to and approved by the Common Council on the 8<sup>th</sup> day of September 1885;

In Witness Whereof I hereunto set my hand and affix the seal of the City of Franklin, this the 9<sup>th</sup> day of September 1885.

Edward Baney, City Clerk. [seal]

Recorded Sept 10<sup>th</sup> 1885 at 8 a.m.  
James T. Trout, R.F.C.