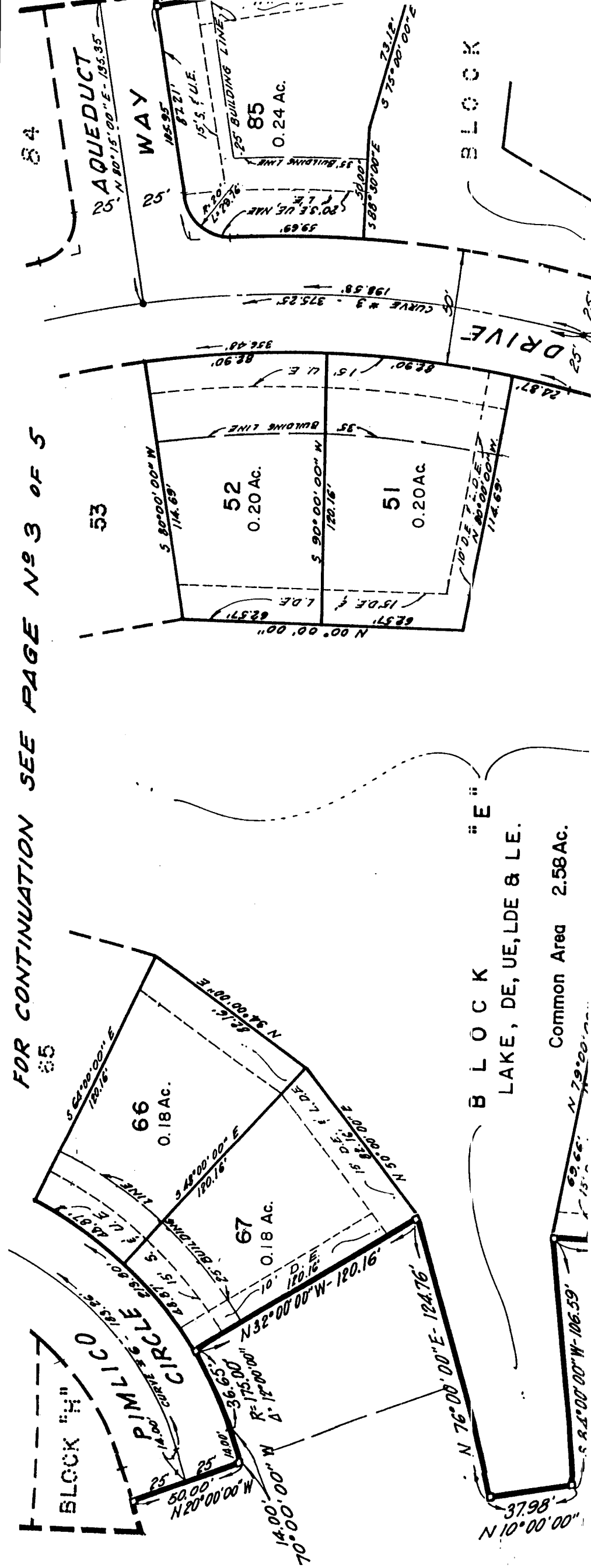


RECEIVED FOR RECORD
AT 8:58 O'CLOCK A.M.
OCT 27 1987

SECONDARY PLAT OF LEXINGTON FARMS SECTION 3 OF 5

DULY ENTERED
27
Belz
Parcel #

FOR CONTINUATION SEE PAGE NO 3 OF 5



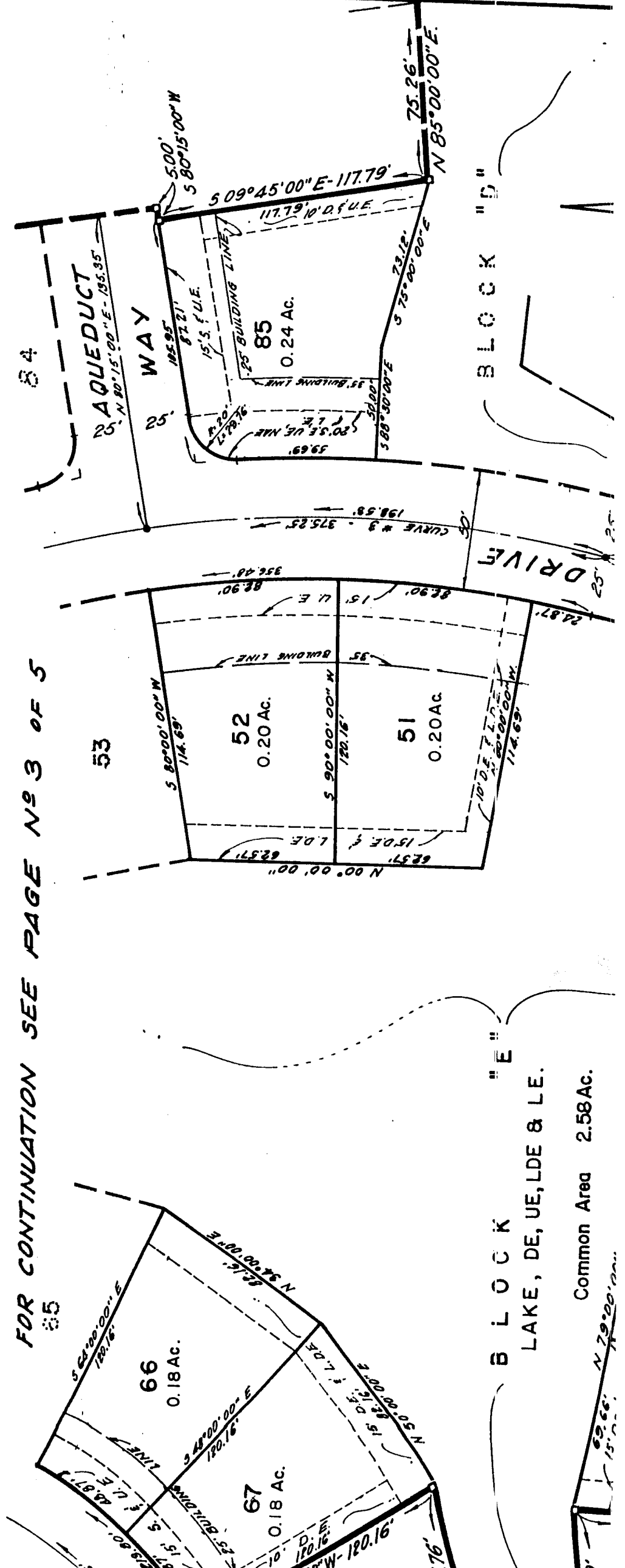
B L O C K
LAKE, DE, UE, LDE & LE.
Common Area 2.58 Ac.

RECEIVED FOR RECORD
 AT 8:52 O'CLOCK A.M.
 OCT 27 1987

DULY ENTERED FOR REGISTRATION
 27 *Chubb* 2087
Belys Rec. Auditor
 Hamilton County
 Parcel #

SECONDARY PLAT OF XINGTON FARMS SECTION

FOR CONTINUATION SEE PAGE NO 3 OF 5



BLOCK "E"
 LAKE, DE, UE, LDE & LE.
 Common Area 2.58 Ac.
 N 79°00'00" W
 69.66'
 15.00'

Steel pin markers (3/8" dia. x 36" long Rebar) to be set vertically at all other corners & intersecting lines.

NOTE:
 All street property line intersections are rounded w/ 20' radii. The block dimensions shown are to the intersections of the block lines unless otherwise noted.

Under authority provided by Title 36, Acts of 1981, P.L. 309 Section 23, under the authority of IC 36-7-4, and an Ordinance adopted by the Common Council of the City of Carmel, Indiana, this plat was given approval by the City of Carmel as follows: Adopted this 18 day of August, 1987.

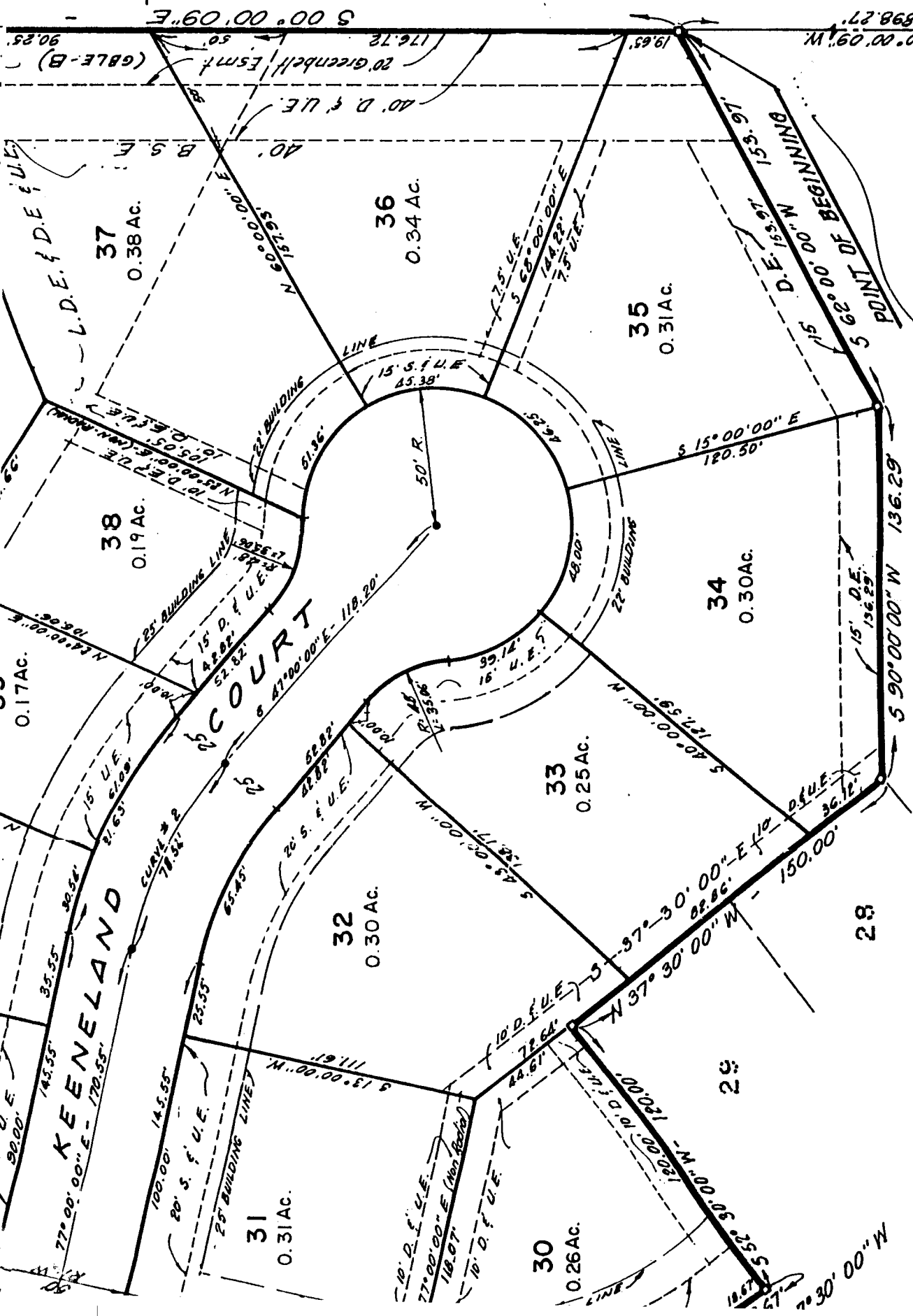
CARMEL CITY PLAN COMMISSION

Richard Albright, President

Dorothy Meisler
 Dorothy Meisler, Secretary

NOTE

THERE IS AN EASEMENT 66 FEET WIDE FOR PUBLIC UTILITIES (PIPE LINES AND ELECTRIC LINES) RECORDED IN D.R. 124, PGS. 295-296 AND D.R. 130 PGS. 200-204 IN THE OFFICE OF THE RECORDER OF HAMILTON COUNTY, INDIANA, WHICH IS IN THE PROCESS OF BEING RELEASED AND THEREFORE HAS NOT BEEN SHOWN ON THIS PLAT.



LEGEND

D.E. = DRAINAGE UTILITY EASEMENT
 L.D.E. = LEGAL DRAINAGE EASEMENT
 D.E. = DRAINAGE EASEMENT
 S.E. = SANITARY EASEMENT

BLOCK "B" SECTION ONE COMMON AREA

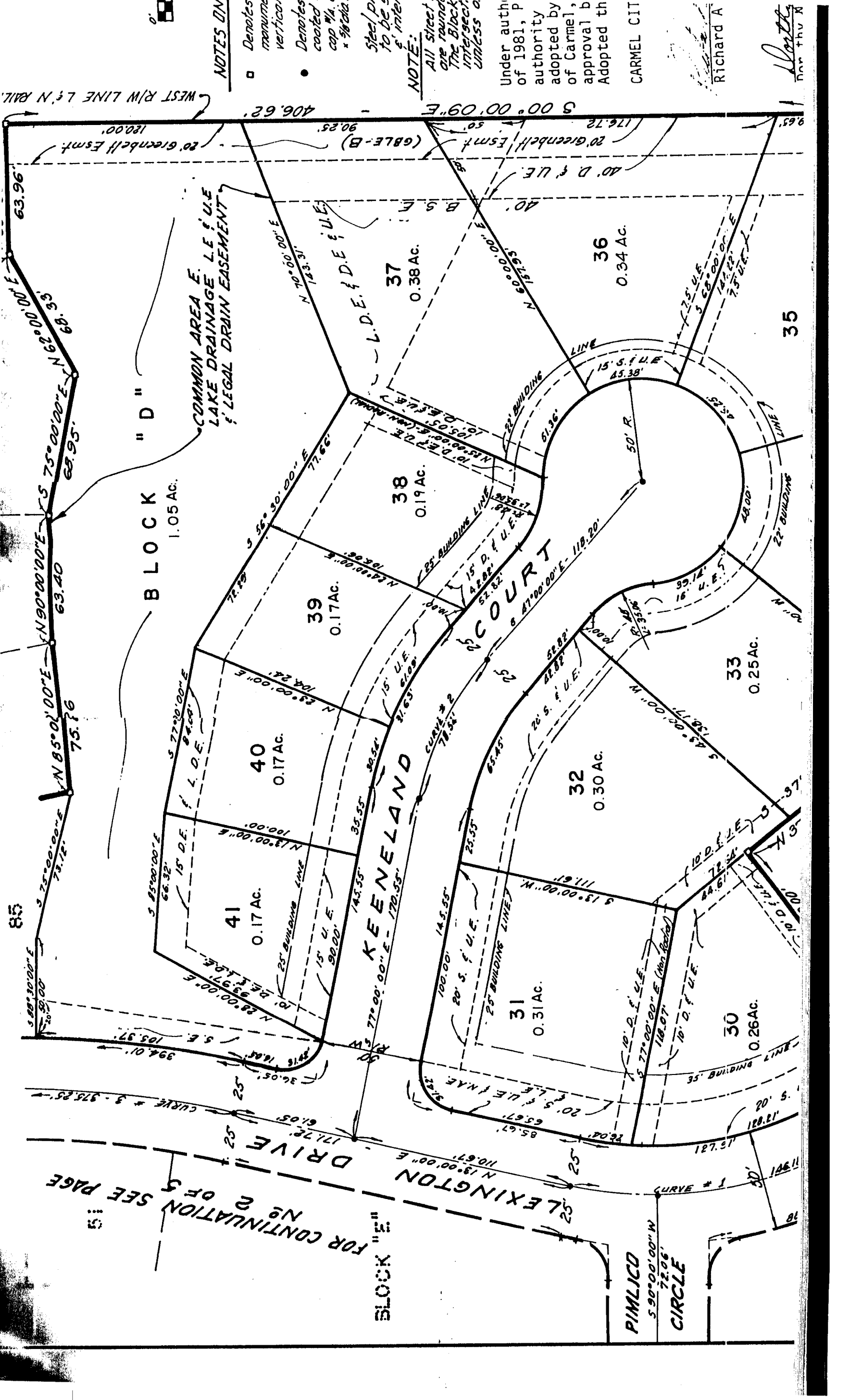
CURVE DATA

CURVE #	Δ	R	L	C	T	CH. BRG.
5 E	90°00'00"	150.00'	235.62'	212.13'	150.00'	S 45°00'00" N
5 IN	"	125.00'	196.35'	176.78'	125.00'	"
5 OUT	"	175.00'	274.89'	242.09'	175.00'	"
5 IN	78°00'00"	152.00'	183.26'	172.07'	185.03'	S 45°00'00" N

DATA

T	CH. BRG
195'	N 16°33'40" N
308'	"
282'	"
7.65'	S 62°00'00" E
4.71'	"
0.99'	"

N. RAILROAD (MONON R.R.) N 00°00'09" W, E 1/2, SW 1/4 SEC. 17-3



NOTES ON

- Denotes manumitted vertical
- Denotes coated cap w/ 1/4" x 3/8" dia
- Steel pipe to be set in place

NOTE:

All street are rounded to the block unless otherwise indicated. Under authority of 1981, P adopted by Carmel, approval b Adopted th CARMEL CIT

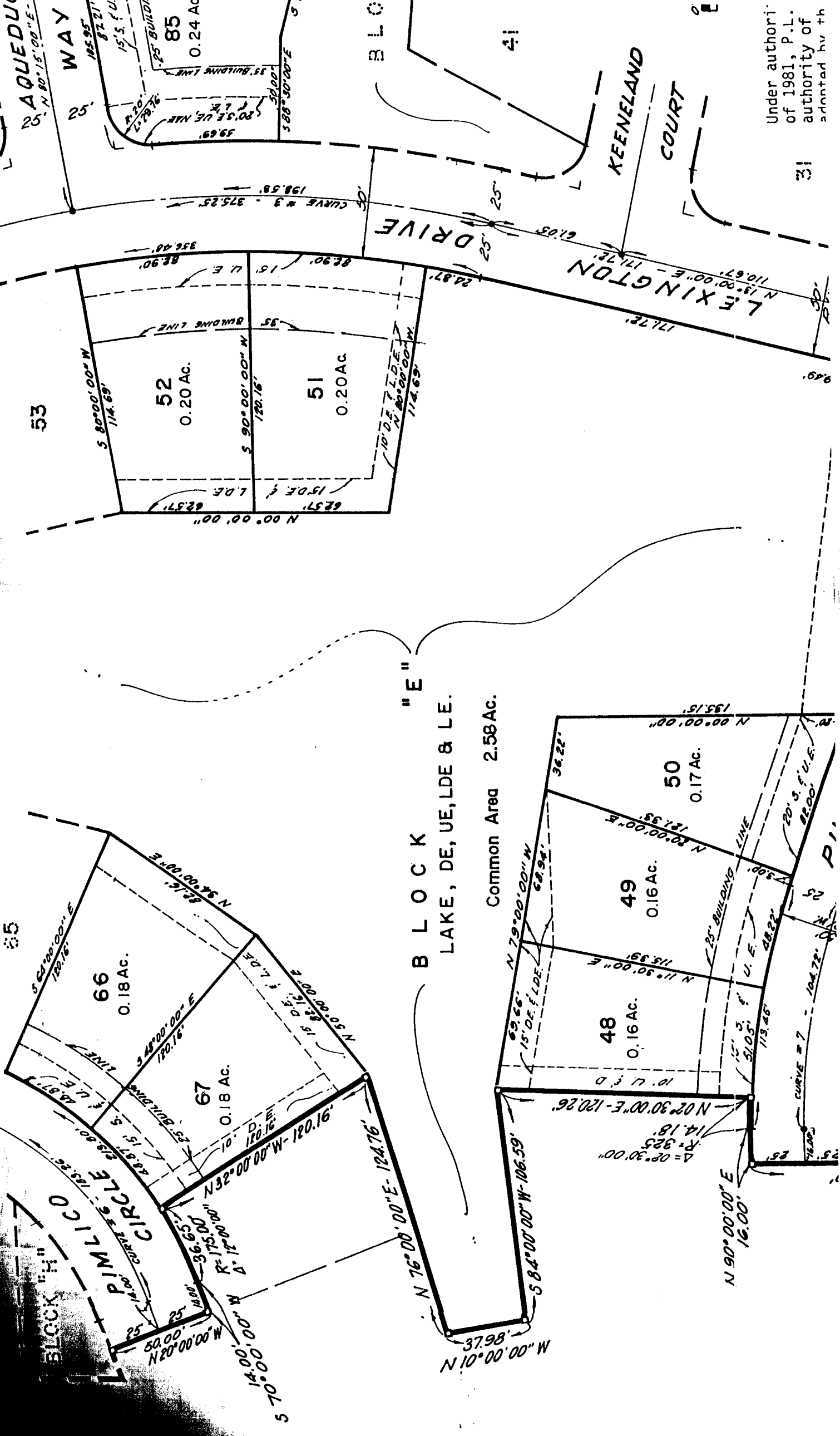
Richard A

Worth
Nov. 14th 1981

WEST R/W LINE L & N RAIL

FOR CONTINUATION SEE PAGE 2 OF 5

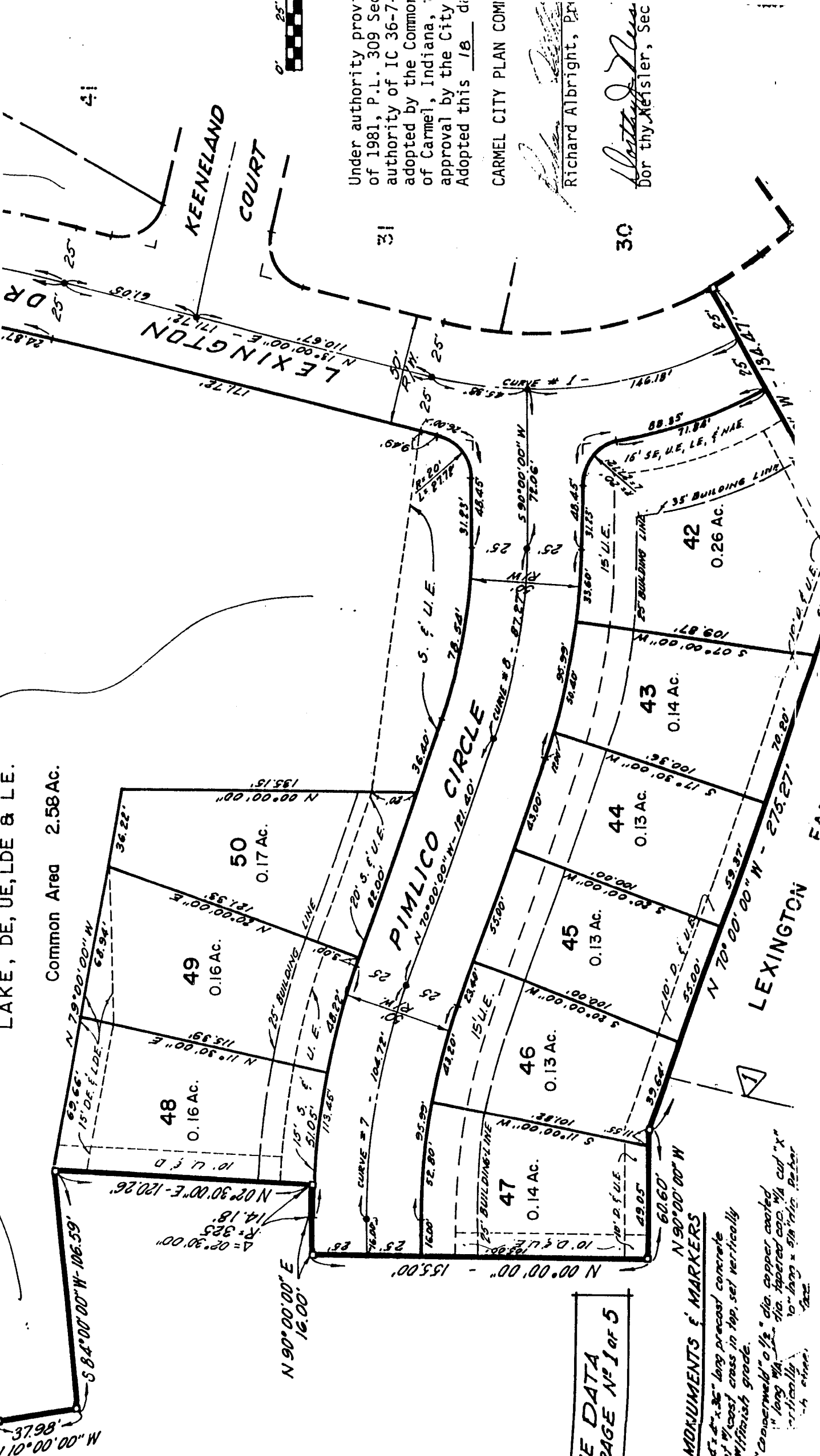
FOR CONTINUATION SEE PAGE NO 3 OF 5



Under authority of 1981, P.L. authority of admitted hv th

LAKE, DE, UE, LDE & LE.

Common Area 2.58 AC.



Under authority provided by the City of Carmel, Indiana, adopted by the City Council of Carmel, Indiana, on 10/18/18, this plan is adopted by the City of Carmel, Indiana, on 10/18/18.

CARMEL CITY PLAN COMMISSION

Richard Albright, President

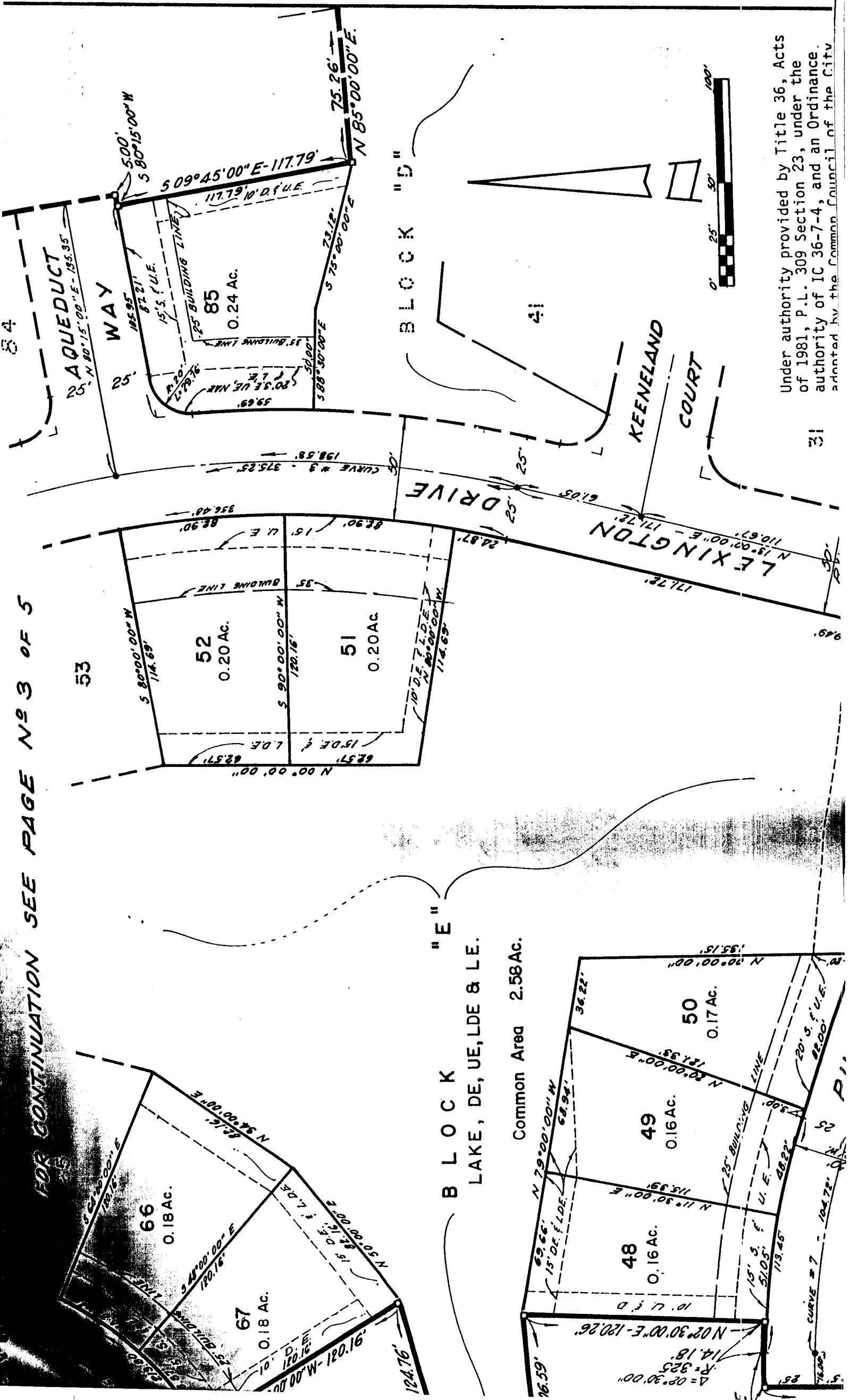
[Signature]
Dorothy Kefisler, Secretary

CURVE DATA
SEE PAGE # 1 of 5

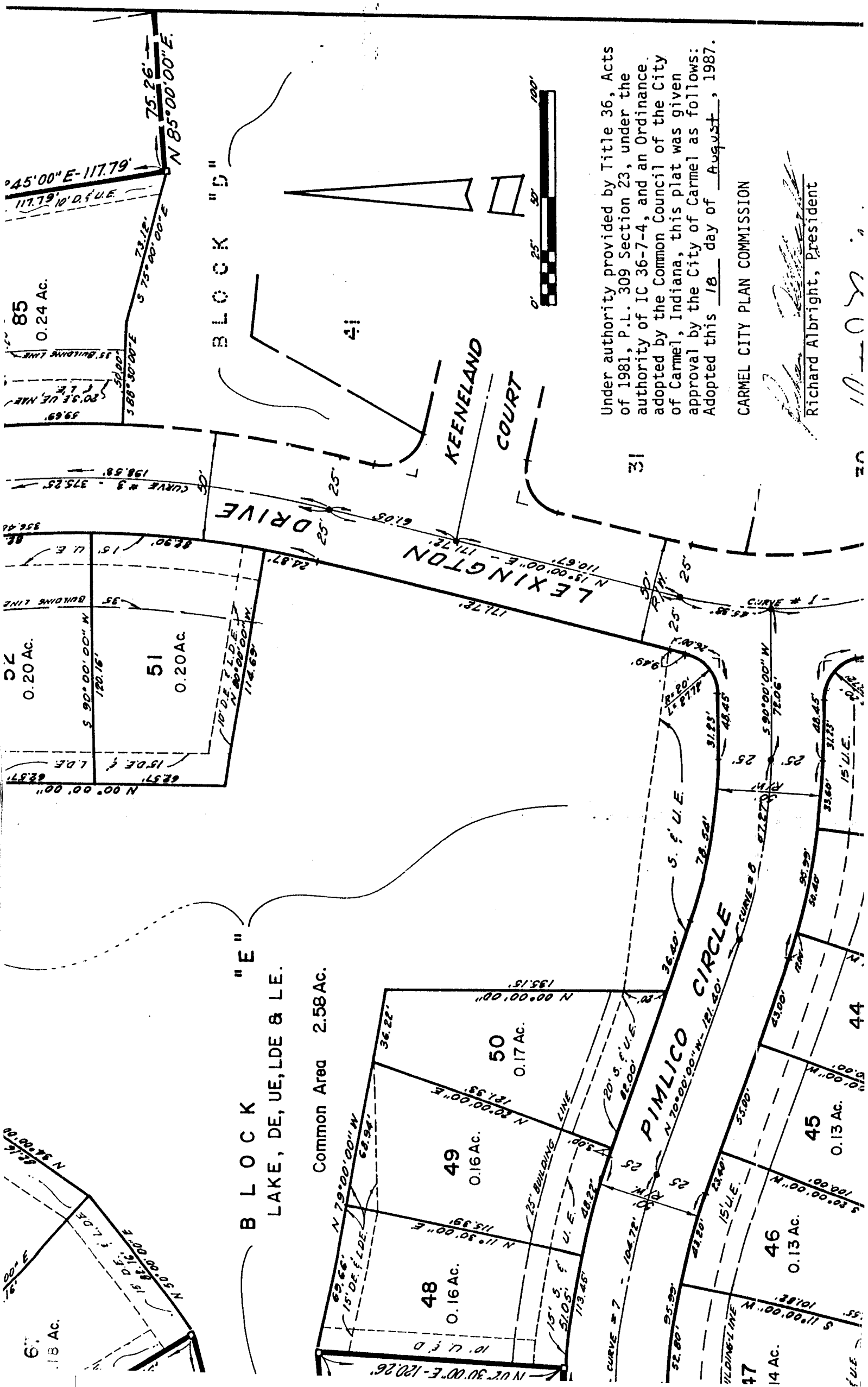
NOTES ON MONUMENTS & MARKERS

Denotes 4" x 4" x 36" long precast concrete monument w/ cast cross in top, set vertically & flush with finish grade.
Denotes "Copperweld" 1/2" dia. copper coated 1/2" long 1/4" dia. tapered cap. 1/4" cut "x" vertically.
10" long x 5/8" dia. rebar set in concrete.

FOR CONTINUATION SEE PAGE NO 3 OF 5



Under authority provided by Title 36, Acts of 1981, P.L. 309 Section 23, under the authority of IC 36-7-4, and an Ordinance adopted by the Common Council of the City

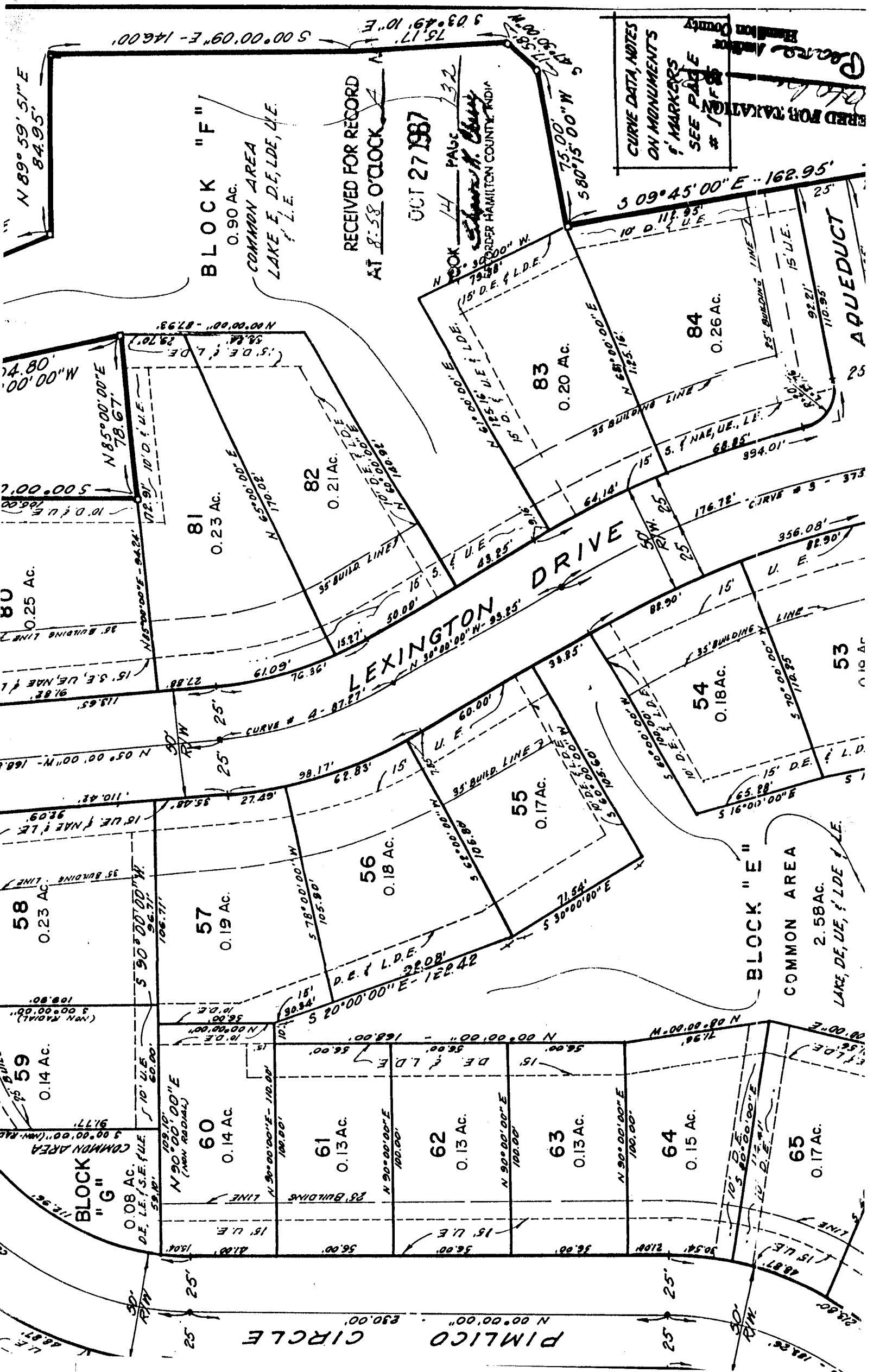


Under authority provided by Title 36, Acts of 1981, P.L. 309 Section 23, under the authority of IC 36-7-4, and an Ordinance adopted by the Common Council of the City of Carmel, Indiana, this plat was given approval by the City of Carmel as follows: Adopted this 18 day of August, 1987.

CARMEL CITY PLAN COMMISSION

[Signature]
Richard Albright, President





N 89° 59' 51" E
84.95'

BLOCK "F"
0.90 AC.
COMMON AREA
LAKE E, D.E, L.D.E, U.E.
' L.E.

RECEIVED FOR RECORD
AT 8:58 O'CLOCK
OCT 27 1987
PAGE 32
Sharon M. Cherry
ORDER HAMILTON COUNTY INDI

ORDER FOR TAKING
COUNTY
CURVE DATA, NOTES
ON MONUMENTS
' MARKERS
SEE PAGE
1 N.F.S.

80
0.25 AC.
N 85° 00' 00" E
78.67'
500.00'
10.0' U.E. & L.D.E.
172.91' 10' D. U.E.
N 15° 00' 00" E - 94.24'
118.65' 91.82' 15.3' U.E, NAE & L.

81
0.23 AC.
N 65° 00' 00" E
170.02'
N 10° 00' 00" E
10.0' U.E. & L.D.E.
N 60° 10' 00" E
10.0' U.E. & L.D.E.

82
0.21 AC.
N 65° 00' 00" E
170.02'
N 10° 00' 00" E
10.0' U.E. & L.D.E.

83
0.20 AC.
N 61° 00' 00" E
151.00' U.E. & L.D.E.
N 125° 16' U.E. & L.D.E.
15' D.

84
0.26 AC.
N 68° 00' 00" E
125.16'
25' BUILDING LINE
15' U.E.
92.21' 110.95'

AQUEDUCT
25'

LEXINGTON DRIVE
35' BUILD. LINE
15' U.E.
50.00'
61.09' 76.92' 15.37'
CURVE # 8 - 87.27'
30' R/W

53
0.10 AC.
356.08' U.E.
82.90'
CURVE # 9 - 373'
176.78'

54
0.18 AC.
N 10° 00' 00" E
10.0' U.E. & L.D.E.
S 60° 00' 00" E
56.00' U.E. & L.D.E.
15' U.E.
88.90' 35' BUILDING LINE

55
0.17 AC.
N 30° 00' 00" W
10.0' U.E. & L.D.E.
60.00'
38.85'
35' BUILD. LINE

56
0.18 AC.
S 78° 00' 00" W
105.80'
S 53° 00' 00" W
10.0' U.E. & L.D.E.

57
0.19 AC.
S 78° 00' 00" W
105.80'
D.E. & L.D.E.
32.08' 122.42'

58
0.23 AC.
35' BUILDING LINE
15' U.E. & NAE & L.E.
92.09' 110.42' 35.48' 67.22'

59
0.14 AC.
COMMON AREA
S 90° 00' 00" W
106.71'
10' U.E.
60.00'

60
0.14 AC.
N 90° 00' 00" E
100.00'
N 90° 00' 00" E - 110.00'
100.00'

61
0.13 AC.
N 90° 00' 00" E
100.00'

62
0.13 AC.
N 90° 00' 00" E
100.00'

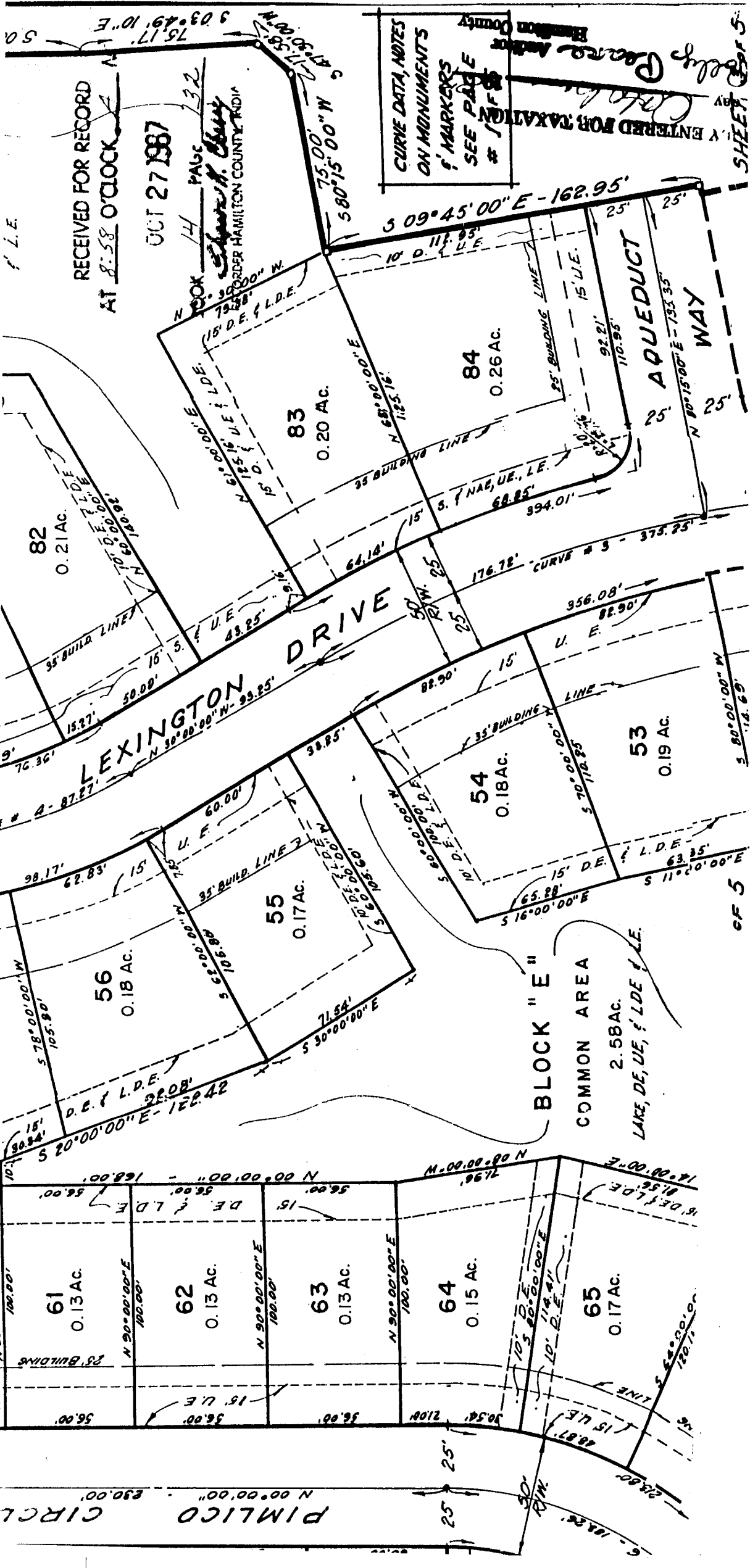
63
0.13 AC.
N 90° 00' 00" E
100.00'

64
0.15 AC.
N 90° 00' 00" E
100.00'

65
0.17 AC.
N 90° 00' 00" E
100.00'

BLOCK "E"
COMMON AREA
2.58 AC.
LAKE, D.E, U.E, ' L.D.E & L.E.

PIMLICO CIRCLE
N 00° 00' 00" - 830.00'



RECEIVED FOR RECORD
AT 8:58 O'CLOCK

OCT 27 1987

BOOK 14 PAGE 132
Charles H. Blunt
ORDER HAMILTON COUNTY, INDIA

CURVE DATA, NOTES
ON MONUMENTS
9' MARKERS
SEE PAGE
100

FILED
COUNTY CLERK
HAMILTON COUNTY, INDIANA
OCT 27 1987
SHEET 5

82
0.21 AC.

83
0.20 AC.

84
0.26 AC.

56
0.18 AC.

55
0.17 AC.

54
0.18 AC.

53
0.19 AC.

BLOCK "E"
COMMON AREA
2.58 AC.

61
0.13 AC.

62
0.13 AC.

63
0.13 AC.

64
0.15 AC.

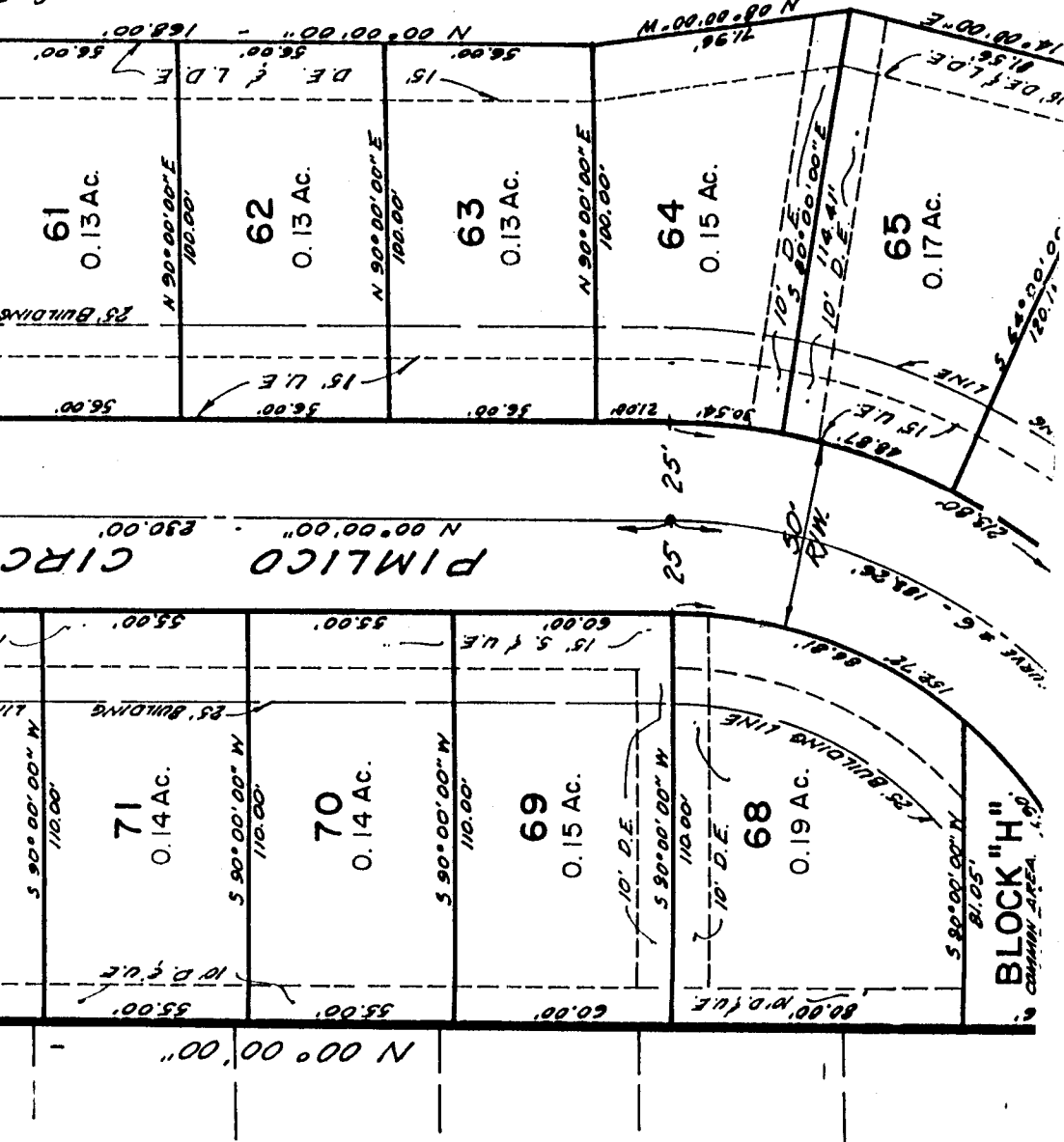
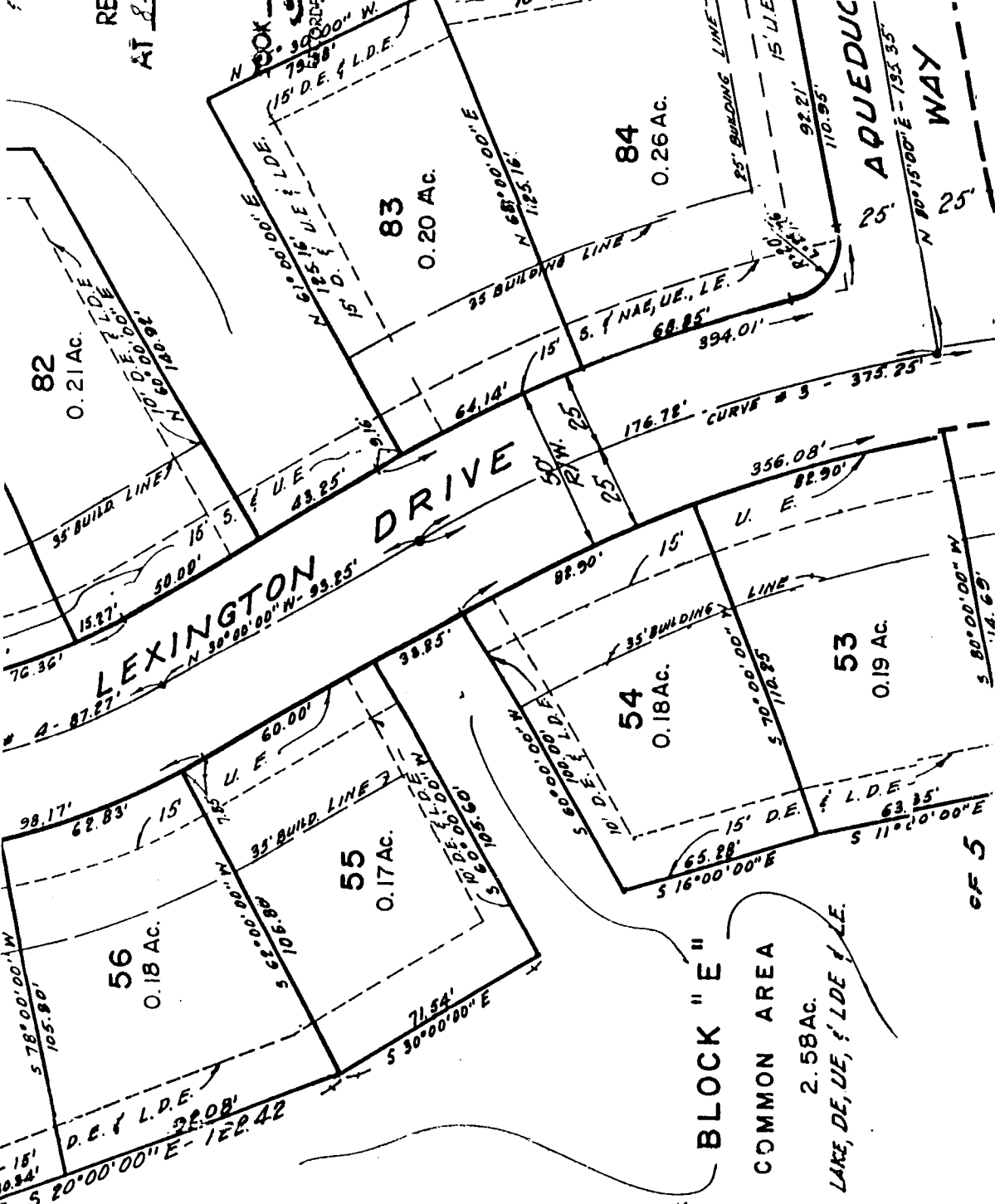
65
0.17 AC.

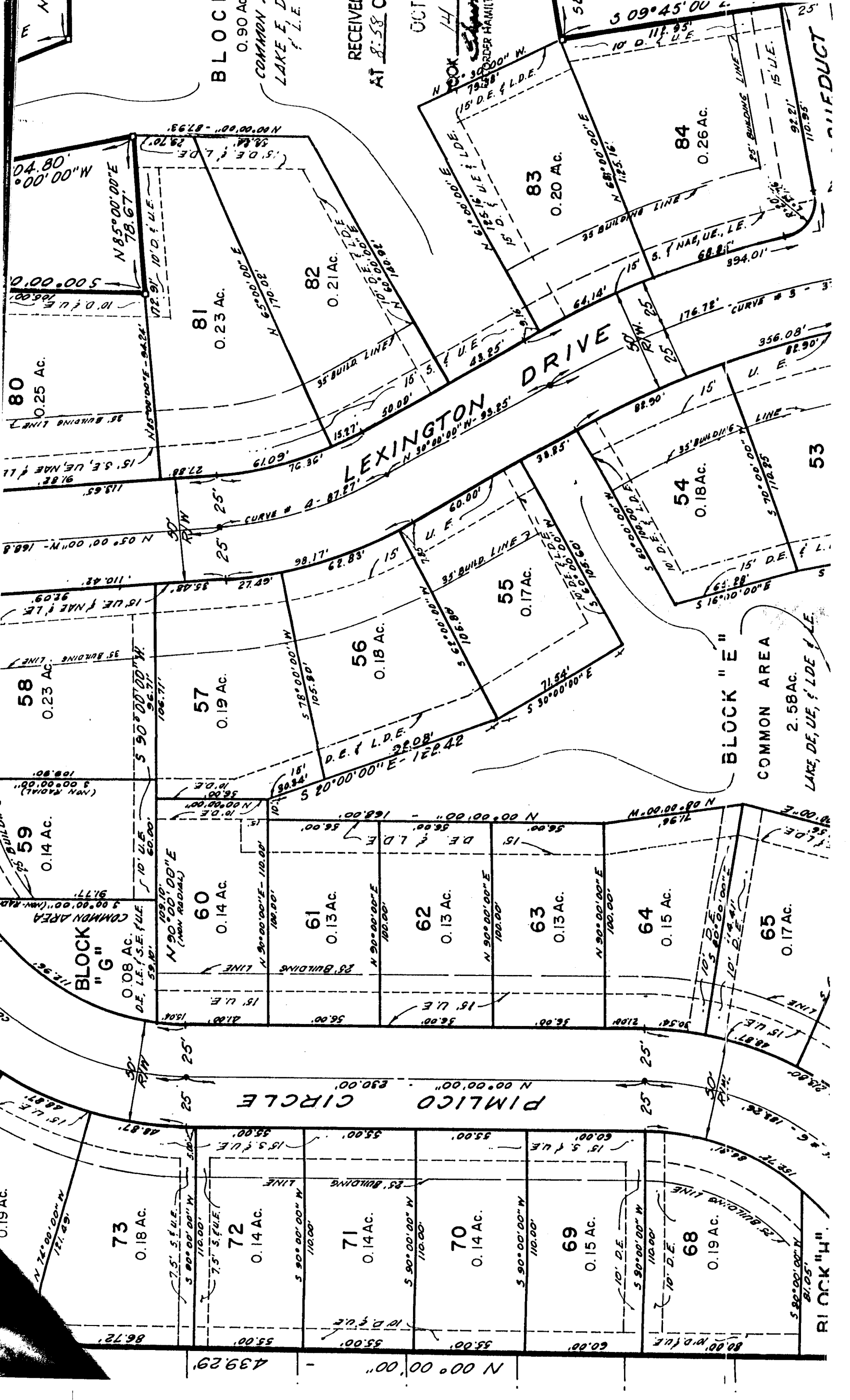
PIMLICO CIRCLE

25' AQUEDUCT
WAY

GF 5

SHEET 5





RECEIVED
AT 8:58 OCT 14

BLOCK
0.90 AC
COMMON
LAKE, DE, UE, LDE, F, L.E.

LEXINGTON DRIVE

BLOCK "E"
COMMON AREA
2.58 AC.
LAKE, DE, UE, LDE, F, L.E.

BLOCK "G"
0.08 AC.
D.E., L.E., S.E., F.U.E.

BLOCK "H"

Map details for Block 'E' lots:

- Lot 53:** 0.17 AC. (COMMON AREA)
- Lot 54:** 0.18 AC.
- Lot 55:** 0.17 AC.
- Lot 56:** 0.18 AC.
- Lot 57:** 0.19 AC.
- Lot 58:** 0.23 AC.
- Lot 59:** 0.14 AC.
- Lot 60:** 0.14 AC.
- Lot 61:** 0.13 AC.
- Lot 62:** 0.13 AC.
- Lot 63:** 0.13 AC.
- Lot 64:** 0.15 AC.
- Lot 65:** 0.17 AC.
- Lot 68:** 0.19 AC.
- Lot 69:** 0.15 AC.
- Lot 70:** 0.14 AC.
- Lot 71:** 0.14 AC.
- Lot 72:** 0.14 AC.
- Lot 73:** 0.18 AC.
- Lot 80:** 0.25 AC.
- Lot 81:** 0.23 AC.
- Lot 82:** 0.21 AC.
- Lot 83:** 0.20 AC.
- Lot 84:** 0.26 AC.

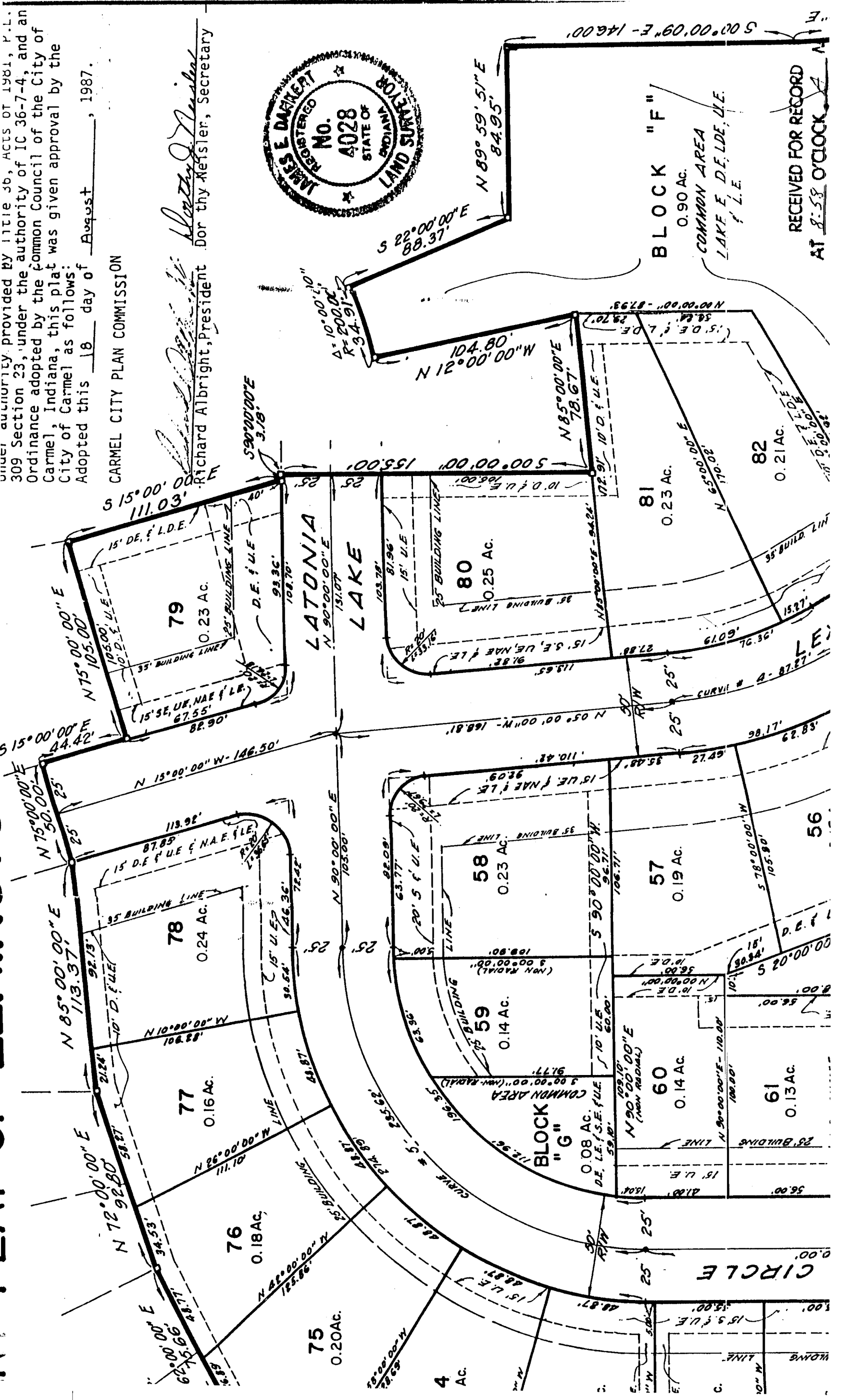
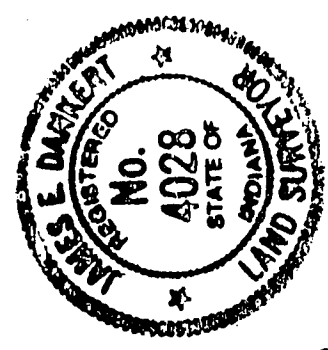
Common Areas:

- Block "G": 0.08 AC.
- Block "E": 2.58 AC.

under authority provided by Article 36, ACIS OF 1981, P.L. 309 Section 23, under the authority of IC 36-7-4, and an Ordinance adopted by the Common Council of the City of Carmel, Indiana, this plat was given approval by the City of Carmel as follows:
 Adopted this 18 day of August, 1987.

CARMEL CITY PLAN COMMISSION

Richard Albright
 Richard Albright, President
Walter J. Neisler
 Walter J. Neisler, Secretary

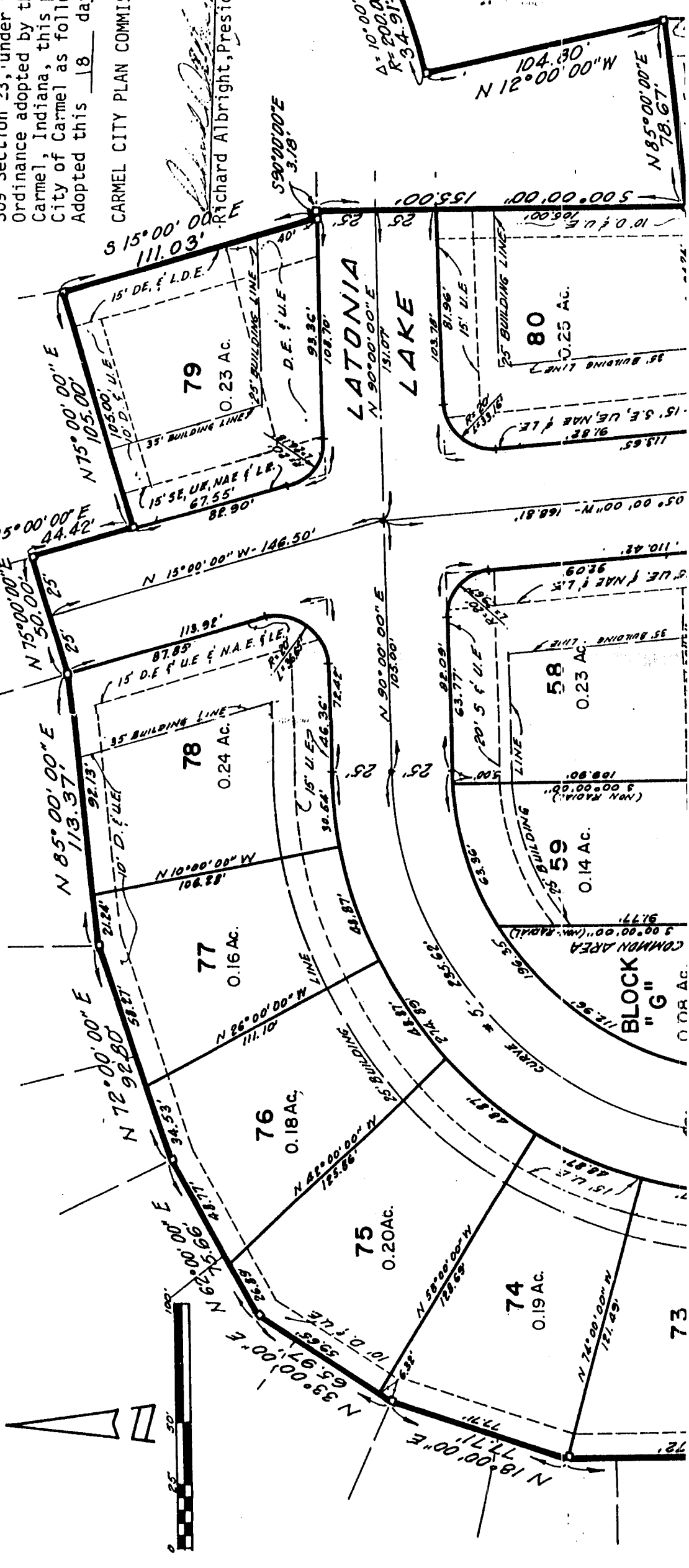


RECEIVED FOR RECORD
 AT 8:58 O'CLOCK

SECONDARY PLAT OF LEXINGTON FARMS-SECTION

Under authority provided in Section 309 of the City Ordinance adopted by the City of Carmel, Indiana, this plat is adopted as follows: Adopted this 18 day

CARMEL CITY PLAN COMMISSION
Richard Albright, President



LATONIA LAKE

BLOCK "G"