

MARRQUIS MANOR

It is hereby certified that the within plat is true and correct and represents an accurate survey of part of the East half of the Northwest quarter of Section 13, Township 15 North, Range 8 East, of the Second Principal Meridian, being more particularly described as follows to-wit: Beginning at a point in the East line of said Section 13, running north 89 degrees 59 minutes 59 seconds West a distance of 332.0 feet to the Northwest corner of said half quarter Section, running thence north 89 degrees 59 minutes 59 seconds West a distance of 332.0 feet to the Northeast corner of said half quarter Section, running thence east 90 degrees 00 minutes 00 seconds a distance of 132.0 feet to the East line of said half quarter Section, running thence east 90 degrees 00 minutes 00 seconds a distance of 132.0 feet to the Southeast corner of said half quarter Section, running thence south 89 degrees 59 minutes 59 seconds West a distance of 332.0 feet to the South line of said half quarter Section, running thence west 89 degrees 59 minutes 59 seconds a distance of 332.0 feet to the point of beginning. The area of said tract is 1.000 acre, subject however to all legal highways or rights of way.

The above plat consists of 16 lots, numbered 1 thru 16 inclusive. The size of lots and widths of streets are shown on the plat in figures denoting feet and decimal parts thereof. Any survey made by me during month, 1924.

Robert E. DeLott
 Registered Professional Engineer No. 6701

The undersigned certifies that the within plat is true and correct and represents an accurate survey of part of the East half of the Northwest quarter of Section 13, Township 15 North, Range 8 East, of the Second Principal Meridian, being more particularly described as follows to-wit: Beginning at a point in the East line of said Section 13, running north 89 degrees 59 minutes 59 seconds West a distance of 332.0 feet to the Northwest corner of said half quarter Section, running thence north 89 degrees 59 minutes 59 seconds West a distance of 332.0 feet to the Northeast corner of said half quarter Section, running thence east 90 degrees 00 minutes 00 seconds a distance of 132.0 feet to the East line of said half quarter Section, running thence east 90 degrees 00 minutes 00 seconds a distance of 132.0 feet to the Southeast corner of said half quarter Section, running thence south 89 degrees 59 minutes 59 seconds West a distance of 332.0 feet to the South line of said half quarter Section, running thence west 89 degrees 59 minutes 59 seconds a distance of 332.0 feet to the point of beginning. The area of said tract is 1.000 acre, subject however to all legal highways or rights of way.

The streets shown and not heretofore dedicated are hereby dedicated to the public. Only one single family dwelling with accessory building, and not exceeding two stories in height, may be erected, or maintained on lots in this addition that be designated as residential lots.

The streets shown and not heretofore dedicated are hereby dedicated to the public. Only one single family dwelling with accessory building, and not exceeding two stories in height, may be erected, or maintained on lots in this addition that be designated as residential lots.

The streets shown and not heretofore dedicated are hereby dedicated to the public. Only one single family dwelling with accessory building, and not exceeding two stories in height, may be erected, or maintained on lots in this addition that be designated as residential lots.

The streets shown and not heretofore dedicated are hereby dedicated to the public. Only one single family dwelling with accessory building, and not exceeding two stories in height, may be erected, or maintained on lots in this addition that be designated as residential lots.

The streets shown and not heretofore dedicated are hereby dedicated to the public. Only one single family dwelling with accessory building, and not exceeding two stories in height, may be erected, or maintained on lots in this addition that be designated as residential lots.

As witness whereof, Southgate Investments, Inc., by John W. Simpson, President, and Robert E. DeLott, Secretary-Treasurer, have hereunto caused their names to be subscribed this 10th day of April, 1924.

State of Iowa)

County of Jasper) ss.
 I, John W. Simpson, President, and Robert E. DeLott, Secretary-Treasurer, of Southgate Investments, Inc., do hereby certify that the above plat is true and correct and represents an accurate survey of the above described premises.

John W. Simpson
 President

Robert E. DeLott
 Secretary-Treasurer

Southgate Investments, Inc.

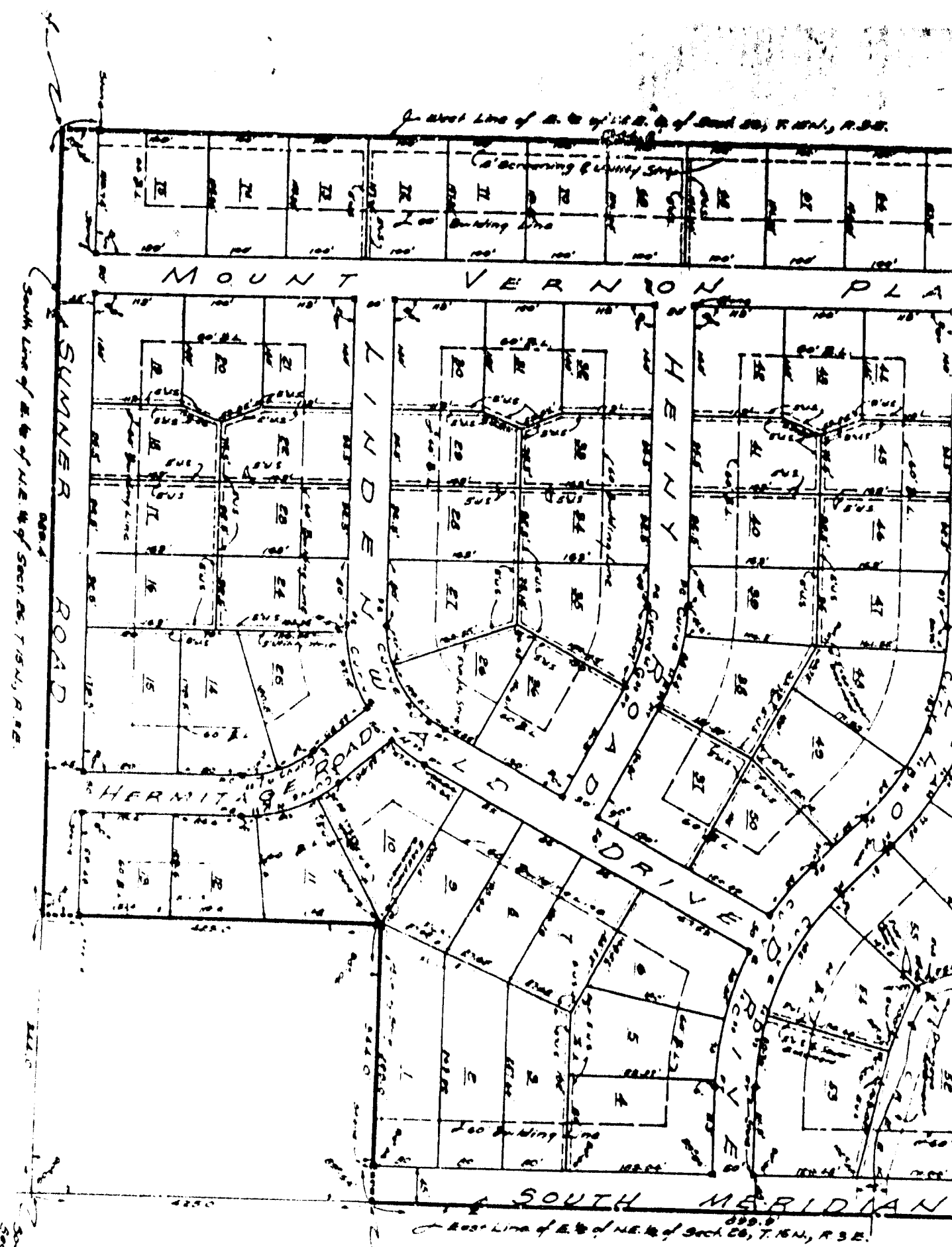
By: *John W. Simpson*, President

By: *Robert E. DeLott*, Secretary-Treasurer

APPROVED THIS 10th DAY OF APRIL 1924
 COUNTY PLAN COMMISSION
 COUNTY OF JASPER
Paul M. Thompson

APPROVED THE 10th DAY OF APRIL 1924

200



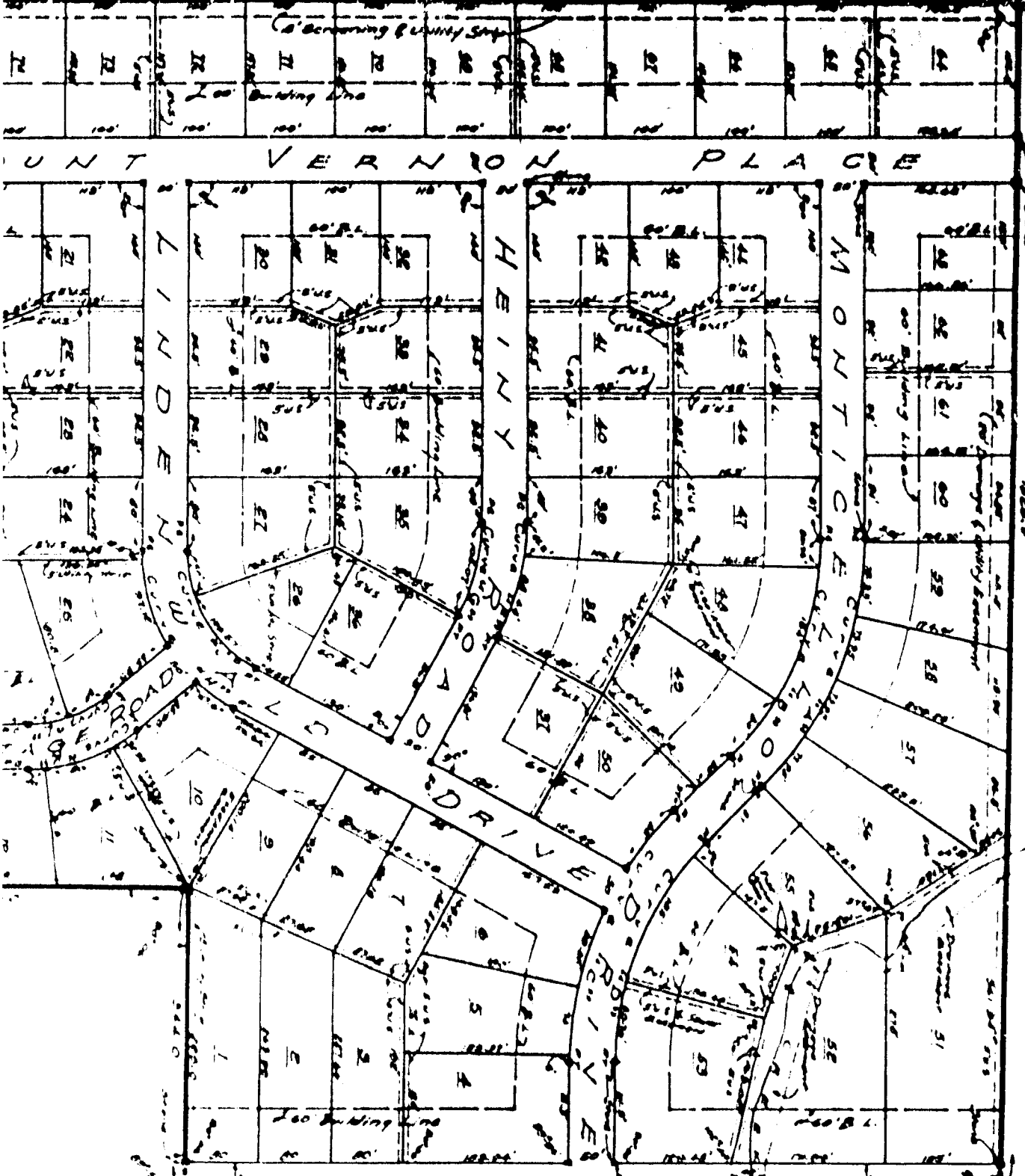
South line of E. 1/2 of N.E. 1/4 of Sect 20, T. 15N., R. 3E.

Southwest corner of E. 1/2 of N.E. 1/4 of Sect 20, T. 15N., R. 3E.

Place of Beginning

1	2	3	4	5	6	7	8	9	10
11	12	13	14	15	16	17	18	19	20
21	22	23	24	25	26	27	28	29	30
31	32	33	34	35	36	37	38	39	40
41	42	43	44	45	46	47	48	49	50
51	52	53	54	55	56	57	58	59	60
61	62	63	64	65	66	67	68	69	70
71	72	73	74	75	76	77	78	79	80
81	82	83	84	85	86	87	88	89	90
91	92	93	94	95	96	97	98	99	100

Base Line of E. 1/4 of NE. 1/4 of Sect 20, T. 15N., R. 32E.



Base Line of E. 1/4 of NE. 1/4 of Sect 20, T. 15N., R. 32E.

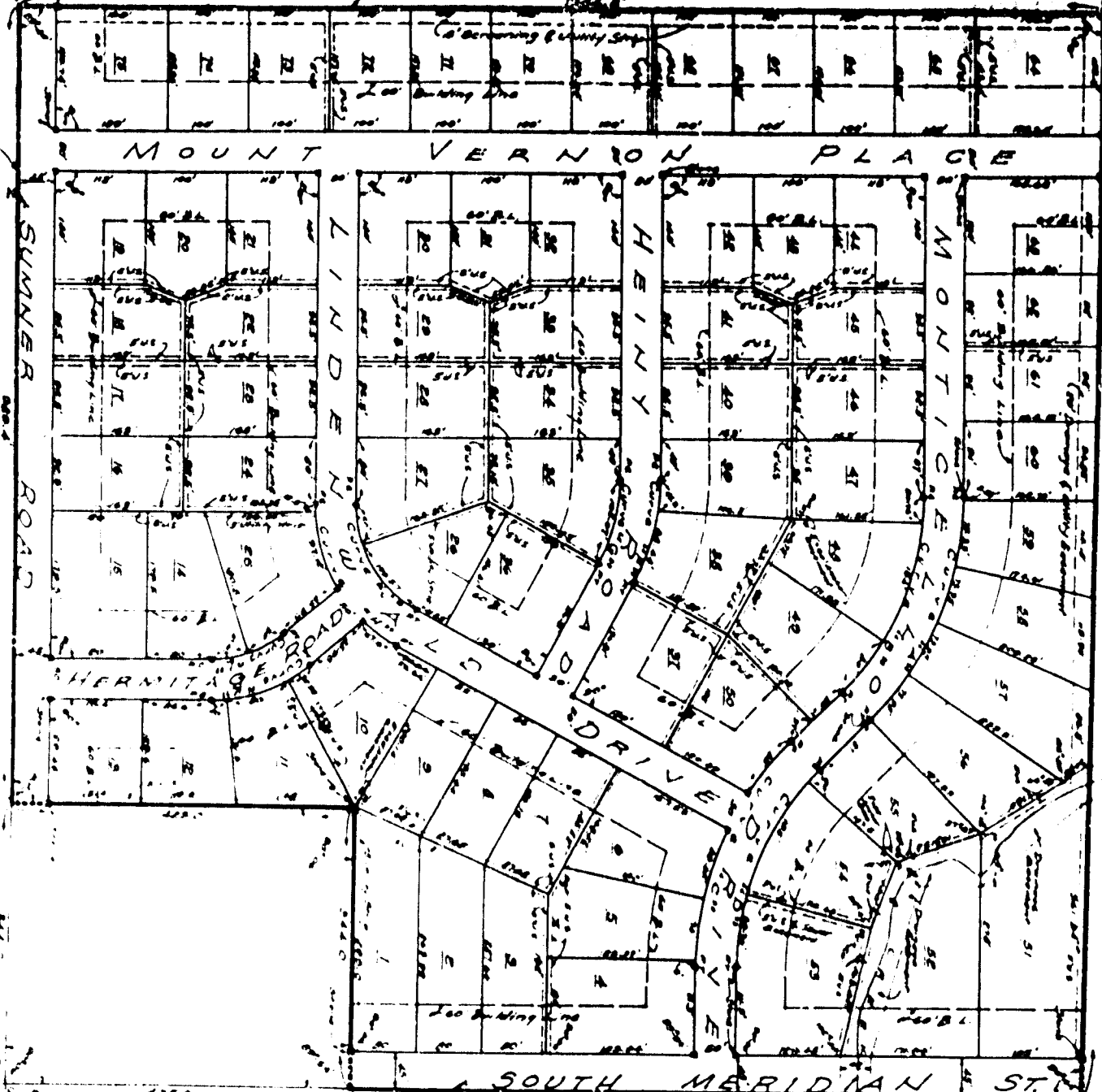
Place of Beginning

CURVE DATA

Curve	I	A	A	P	L
1	100	100	100	100	100
2	100	100	100	100	100
3	100	100	100	100	100
4	100	100	100	100	100
5	100	100	100	100	100
6	100	100	100	100	100
7	100	100	100	100	100
8	100	100	100	100	100
9	100	100	100	100	100
10	100	100	100	100	100
11	100	100	100	100	100
12	100	100	100	100	100
13	100	100	100	100	100
14	100	100	100	100	100
15	100	100	100	100	100
16	100	100	100	100	100
17	100	100	100	100	100
18	100	100	100	100	100
19	100	100	100	100	100
20	100	100	100	100	100
21	100	100	100	100	100
22	100	100	100	100	100
23	100	100	100	100	100
24	100	100	100	100	100
25	100	100	100	100	100
26	100	100	100	100	100
27	100	100	100	100	100
28	100	100	100	100	100
29	100	100	100	100	100
30	100	100	100	100	100
31	100	100	100	100	100
32	100	100	100	100	100
33	100	100	100	100	100
34	100	100	100	100	100
35	100	100	100	100	100
36	100	100	100	100	100
37	100	100	100	100	100
38	100	100	100	100	100
39	100	100	100	100	100
40	100	100	100	100	100
41	100	100	100	100	100
42	100	100	100	100	100
43	100	100	100	100	100
44	100	100	100	100	100
45	100	100	100	100	100
46	100	100	100	100	100
47	100	100	100	100	100
48	100	100	100	100	100
49	100	100	100	100	100
50	100	100	100	100	100
51	100	100	100	100	100
52	100	100	100	100	100
53	100	100	100	100	100
54	100	100	100	100	100
55	100	100	100	100	100
56	100	100	100	100	100
57	100	100	100	100	100
58	100	100	100	100	100
59	100	100	100	100	100
60	100	100	100	100	100
61	100	100	100	100	100
62	100	100	100	100	100
63	100	100	100	100	100
64	100	100	100	100	100
65	100	100	100	100	100
66	100	100	100	100	100
67	100	100	100	100	100
68	100	100	100	100	100
69	100	100	100	100	100
70	100	100	100	100	100
71	100	100	100	100	100
72	100	100	100	100	100
73	100	100	100	100	100
74	100	100	100	100	100
75	100	100	100	100	100
76	100	100	100	100	100
77	100	100	100	100	100
78	100	100	100	100	100
79	100	100	100	100	100
80	100	100	100	100	100
81	100	100	100	100	100
82	100	100	100	100	100
83	100	100	100	100	100
84	100	100	100	100	100
85	100	100	100	100	100
86	100	100	100	100	100
87	100	100	100	100	100
88	100	100	100	100	100
89	100	100	100	100	100
90	100	100	100	100	100
91	100	100	100	100	100
92	100	100	100	100	100
93	100	100	100	100	100
94	100	100	100	100	100
95	100	100	100	100	100
96	100	100	100	100	100
97	100	100	100	100	100
98	100	100	100	100	100
99	100	100	100	100	100
100	100	100	100	100	100

CAGE 513

North Line of E. 1/2 of N.E. 1/4 of Sect. 20, T. 15 N., R. 3 E.



South Line of E. 1/2 of N.E. 1/4 of Sect. 20, T. 15 N., R. 3 E.

Southwest Corner of E. 1/2 of N.E. 1/4 of Sect. 20, T. 15 N., R. 3 E.

Place of Beginning

CURVE DATA

Curve No.	Station	Angle	Radius	Chord	Offset	Area
1	100+00	90	100	141.42	70.71	7853.98
2	100+00	90	100	141.42	70.71	7853.98
3	100+00	90	100	141.42	70.71	7853.98
4	100+00	90	100	141.42	70.71	7853.98
5	100+00	90	100	141.42	70.71	7853.98
6	100+00	90	100	141.42	70.71	7853.98
7	100+00	90	100	141.42	70.71	7853.98
8	100+00	90	100	141.42	70.71	7853.98
9	100+00	90	100	141.42	70.71	7853.98
10	100+00	90	100	141.42	70.71	7853.98
11	100+00	90	100	141.42	70.71	7853.98
12	100+00	90	100	141.42	70.71	7853.98

CAGE 513