



The map of the city of New York, showing the location of the subject property, is attached hereto for your information. The subject property is located at the intersection of the East River and the East River Drive, in the City of New York. The subject property is a lot of land, bounded on the north by the East River, on the south by the East River Drive, on the east by the East River, and on the west by the East River. The subject property is a lot of land, bounded on the north by the East River, on the south by the East River Drive, on the east by the East River, and on the west by the East River.

N. H. MOORE, etc.  
By and pursuant to the order of the Board of Estimate and Taxation, dated the 15th day of June, 1930.

The subject property, being a lot of land, bounded on the north by the East River, on the south by the East River Drive, on the east by the East River, and on the west by the East River, is a lot of land, bounded on the north by the East River, on the south by the East River Drive, on the east by the East River, and on the west by the East River. The subject property is a lot of land, bounded on the north by the East River, on the south by the East River Drive, on the east by the East River, and on the west by the East River. The subject property is a lot of land, bounded on the north by the East River, on the south by the East River Drive, on the east by the East River, and on the west by the East River.

The subject property, being a lot of land, bounded on the north by the East River, on the south by the East River Drive, on the east by the East River, and on the west by the East River, is a lot of land, bounded on the north by the East River, on the south by the East River Drive, on the east by the East River, and on the west by the East River. The subject property is a lot of land, bounded on the north by the East River, on the south by the East River Drive, on the east by the East River, and on the west by the East River. The subject property is a lot of land, bounded on the north by the East River, on the south by the East River Drive, on the east by the East River, and on the west by the East River.

ENTERED  
TAXATION

STATE OF INDIANA }  
COUNTY OF MARION } S.S.  
I, the undersigned, being a Notary Public in and for said County and State, ATTEST: My commission expires May 16, 1941.

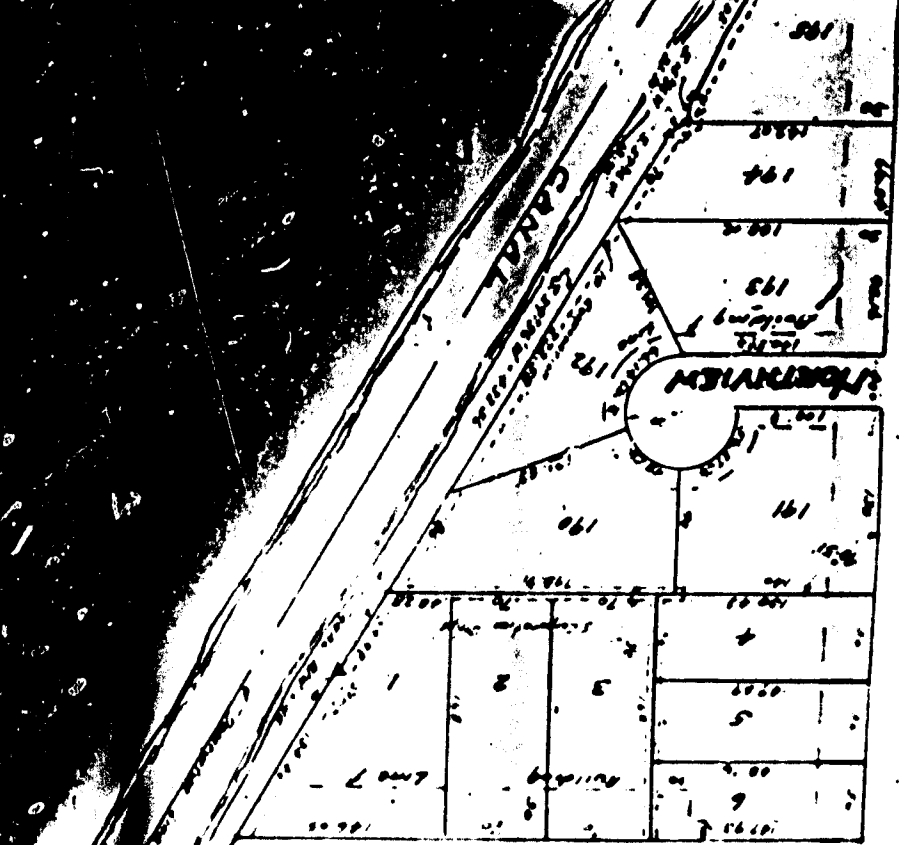
Albi A. Miller

APPROVED BY: [Signature]  
NOTARY PUBLIC  
BAND OF: [Signature]

N. ILLINOIS

STREET

CANAL

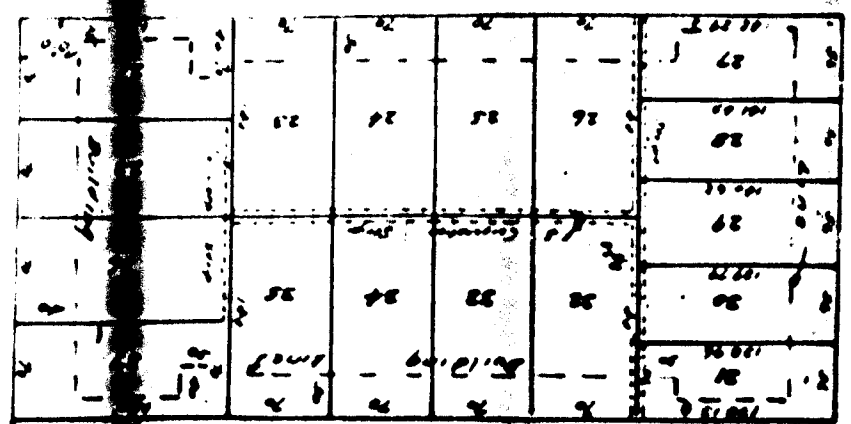


LAVAROCK



STREET

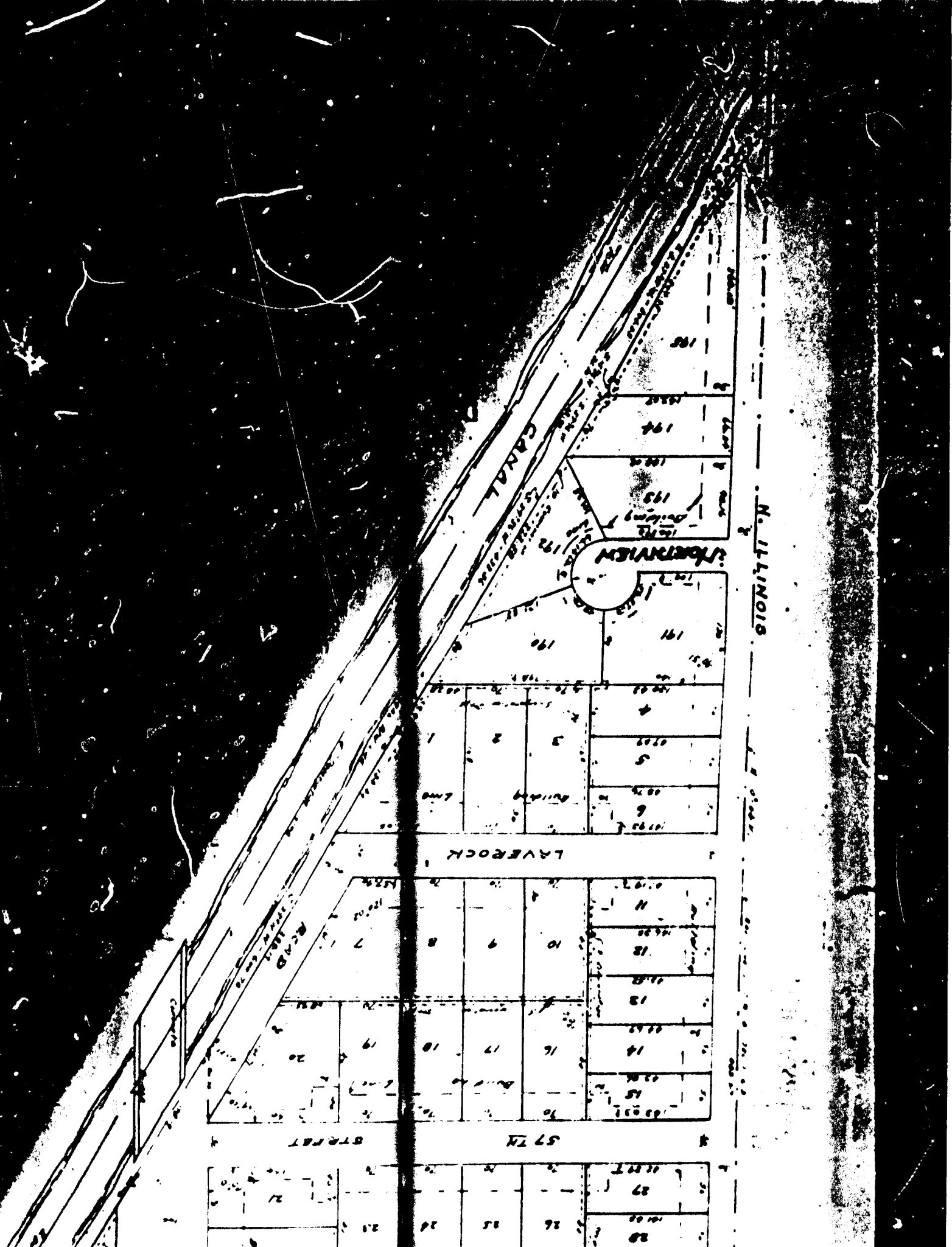
57th



STREET

58th

N. ILLINOIS



CANAL

STORMWATER

LAVEROCK

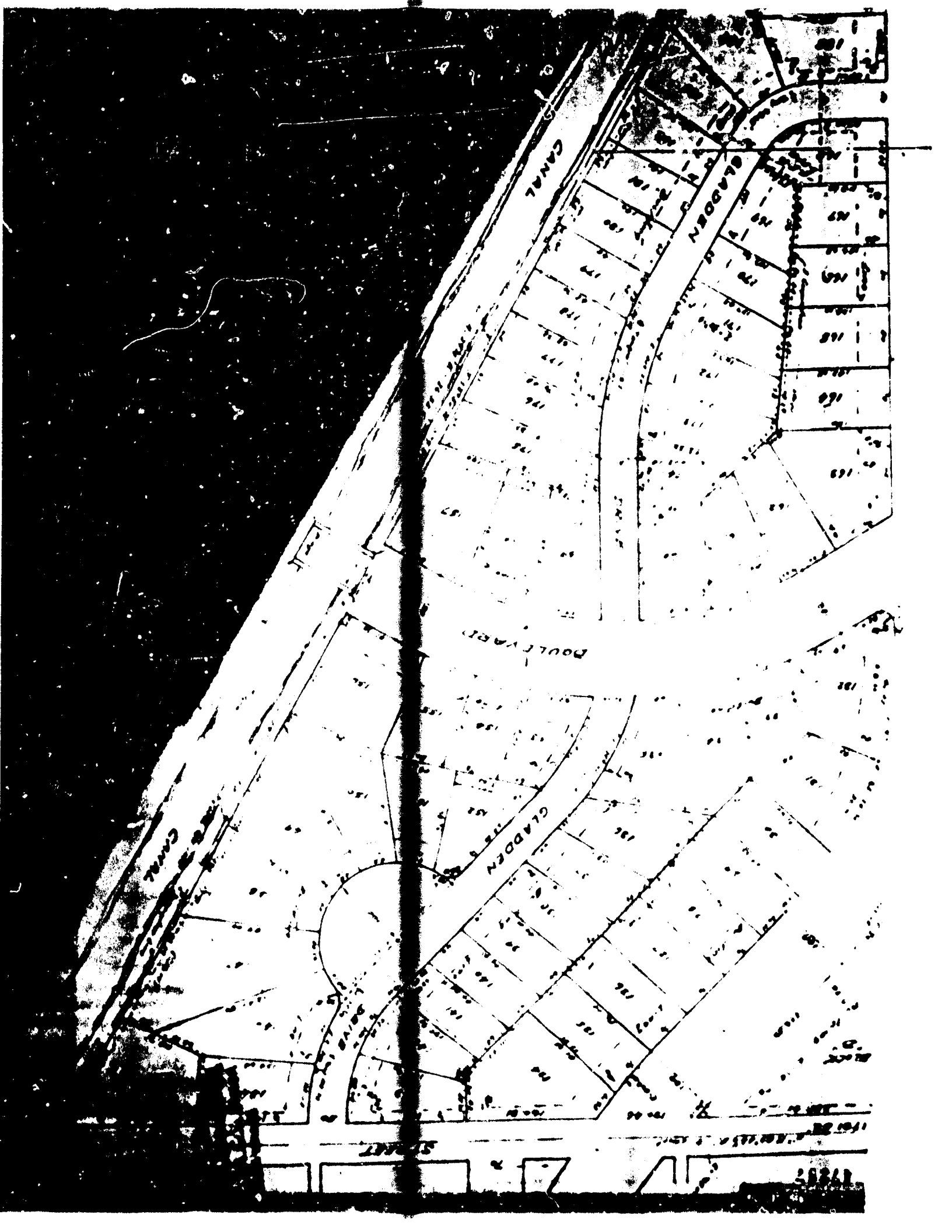
STREET 57 TH

N. ILLINOIS

28	26	25	24	23
27	26	25	24	23

11	12	13	14	15
16	17	18	19	20
21	22	23	24	25

1	2	3	4	5	6
7	8	9	10	11	12
13	14	15	16	17	18
19	20	21	22	23	24
25	26	27	28	29	30



CANAL

GLADEN

BOULEVARD

GLADEN

CANAL

STREET

2121

