

# OAKLAND HILLS AT GEIST SECTION TEN

## SECONDARY PLAT

10000000  
 00000000  
 00000000

00000000



- LEGEND**
- S.O. R.U.E. = SEWER, DRAINAGE AND UTILITY EASEMENT
  - D.E. = DRAINAGE EASEMENT
  - S.E. = SEWER EASEMENT
  - U.E. = UTILITY EASEMENT
  - D.E. = DRAINAGE EASEMENT
  - F = FENCE
  - I = ARC LENGTH
  - R/W = RIGHT OF WAY
  - S.F. = SQUARE FEET
  - = STREET ADDRESS

**NOTES/INSTRUMENTS AND MARKETS**

- DENOTES A 3/8" DIA. X 36" LONG PEGAS WITH CAP SET, STAMPED "P.L. GRAPE, INC." UNLESS OTHERWISE NOTED.
- DENOTES A "SUPPORT" 3/8" DIA. COPPER COATED STEEL ROD 6" LONG WITH 1/2" DIA. TAPERED BRASS CAP HAVING A "GUT" IN THE TOP, TO BE SET WHERE SHOWN, FLUSH WITH FINISH STREET SURFACE OVER A 5/8" DIA. X 36" LONG STUD. REBAR.
- ⊙ DENOTES A MONUMENT SET WITH ADJOINING PLAT.

CURVE #	DELTA	RADIUS	LENGTH	CHORD	TANGENT	CH. BEG.	CH. END.
1.01	16°23'42"	370'	78.87'	78.87'	39.82'	N 70°42'45" E	
1.02	16°23'29"	307'	65.84'	65.84'	41.22'	N 70°42'45" E	
1.03	16°23'17"	325'	92.99'	92.99'	48.35'	N 70°42'45" E	
2.04	13°21'06"	315'	65.19'	65.04'	32.75'	N 55°41'28" E	
2.05	13°21'02"	300'	71.11'	70.91'	36.72'	N 55°41'28" E	
2.06	13°21'04"	325'	77.04'	76.84'	38.70'	N 55°41'28" E	
3.07	13°18'41"	150'	34.50'	33.87'	17.54'	S 85°10'35" E	
3.08	13°18'41"	170'	40.20'	39.54'	21.54'	S 85°10'35" E	
3.09	13°18'45"	190'	45.72'	45.15'	24.78'	S 85°10'35" E	

00000000

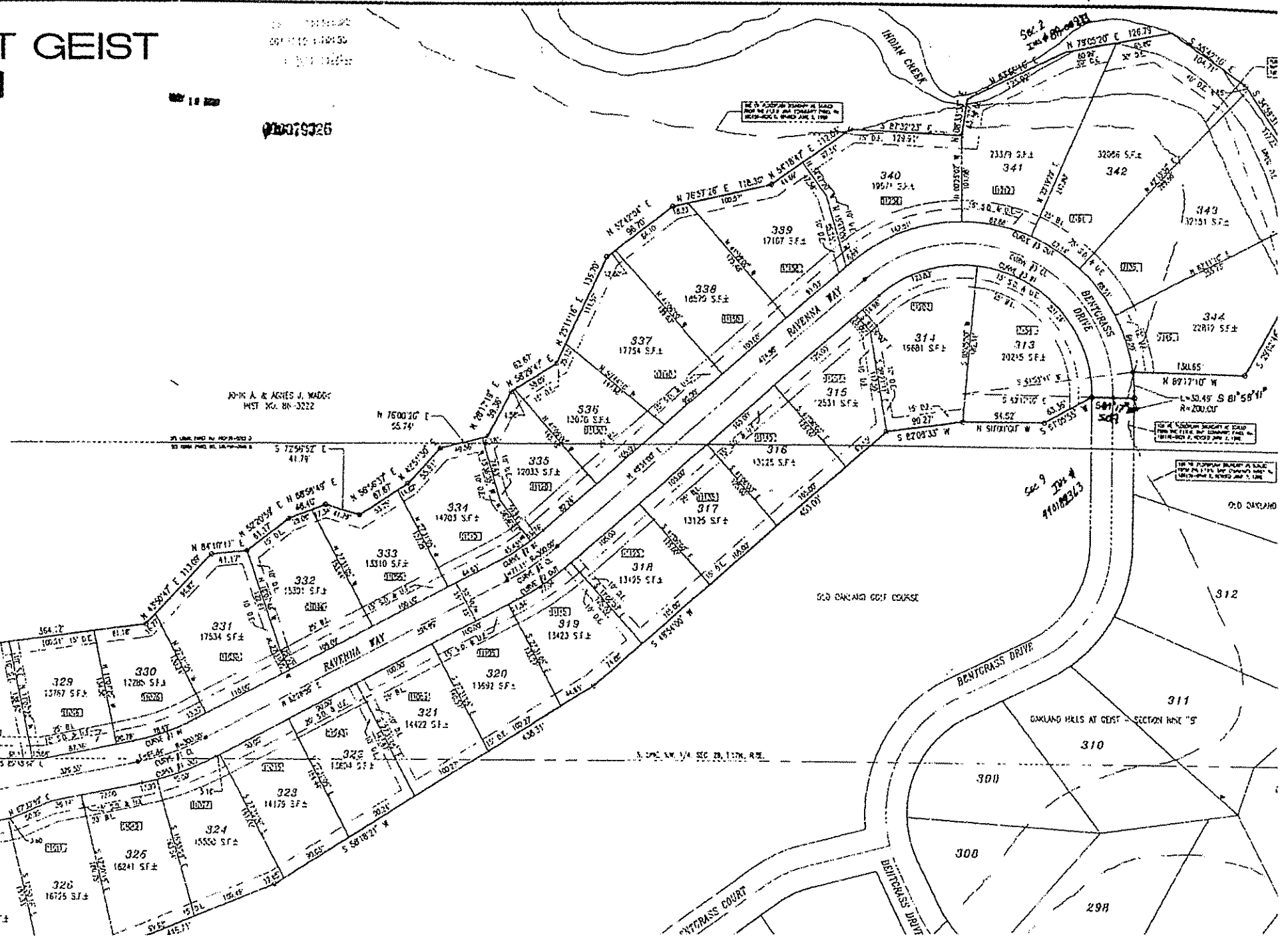
SALVATION ARMY, INC  
 DIST. NO. 10687-09

S 82°24'05" E 771.50'  
 S 106°54'14" E 27.13M P.22

**FILED**  
 JUN 18 2006  
 LAWRENCE TOWNSHIP ASSESSOR

APPROVED THIS 18th DAY OF MAY 2006  
 LAWRENCE TOWNSHIP ASSESSOR  
 DRAFTSMAN

FINAL APPROVAL  
 PLAT COMMITTEE



# LLS AT GEIST ON TEN

## ARY PLAT

MADE AND UTILITY FURNISH  
SCHEDULE  
SHOW  
STAKE  
STAKE

BY  
IT  
UNION

WITH CAP SET, STAMPED  
CO.

PER COATED STEEL ROD 1/2" DIA.  
AND 1/4" DIA. ON THE TOP TO  
H. SMOOTH SURFACE OVER A 1/4"

NO PLAT

CHORD	TANGENT	CH. BEG.
78.12	39.87	N 70° 42' 45" E
85.55	41.27	N 70° 42' 45" E
92.87	46.25	N 70° 42' 45" E
100.00	52.72	N 55° 47' 28" E
107.84	58.77	N 55° 47' 28" E
116.45	66.70	N 55° 47' 28" E
125.87	76.44	S 85° 11' 33" E
136.01	88.24	S 85° 11' 33" E
146.85	102.25	S 85° 11' 33" E

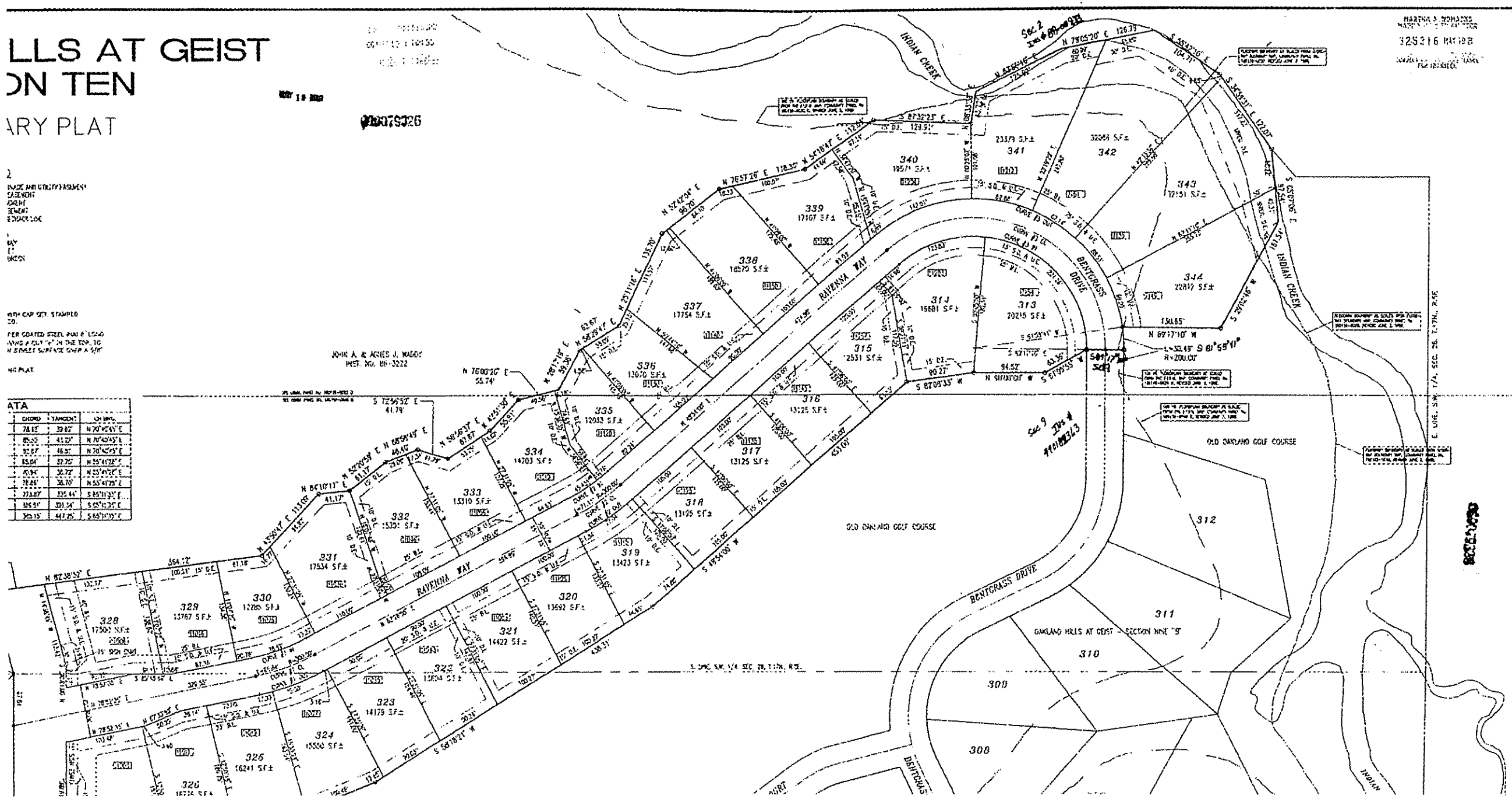
DATE: 10/11/2000  
DRAWN BY: J. W. H. S.  
NO. 100-100-100

NO. 100-100-100

000000000

JOHN A. & JENIS J. WAGG  
WEST. NO. 00-3232

HARTELL & ROMAN  
328316 MAY 1988  
100-100-100



000000000



