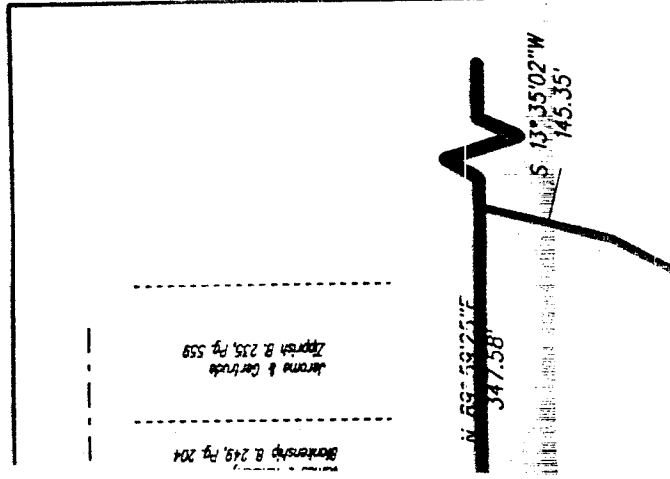


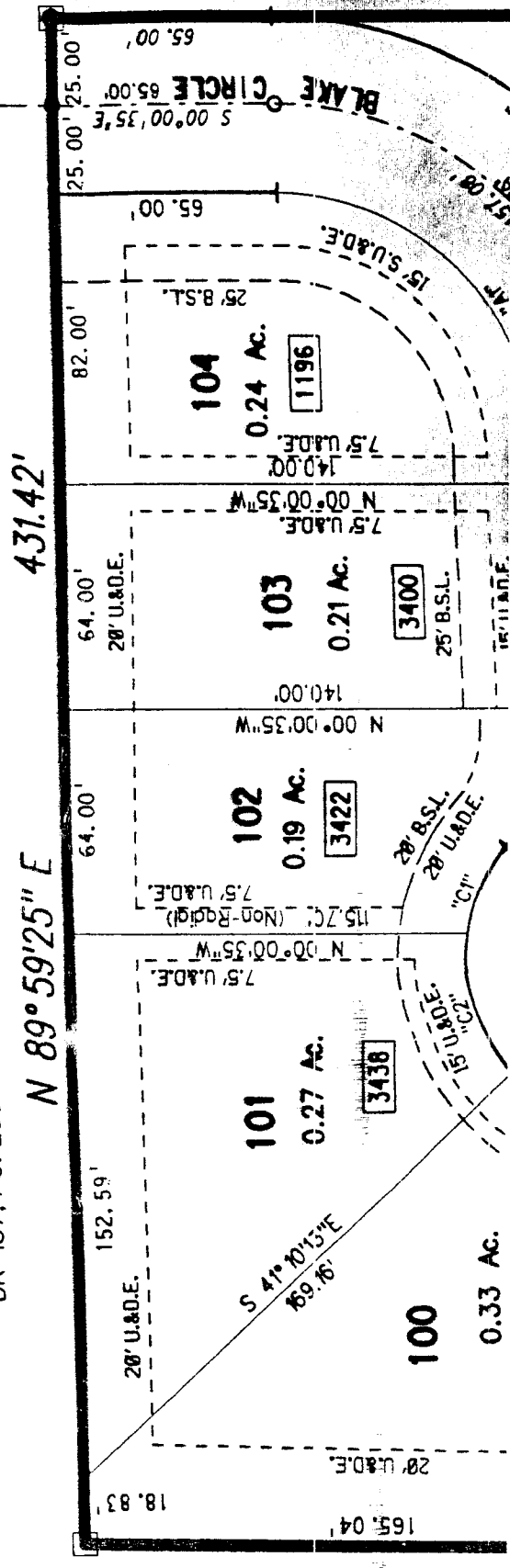
# FINAL PLAT FOR OLIVE BRANCH MANOR SECTION 4

SECTION 2, TOWNSHIP 13 NORTH, RANGE 3 EAST  
JOHNSON COUNTY, INDIANA  
14.334 ACRES

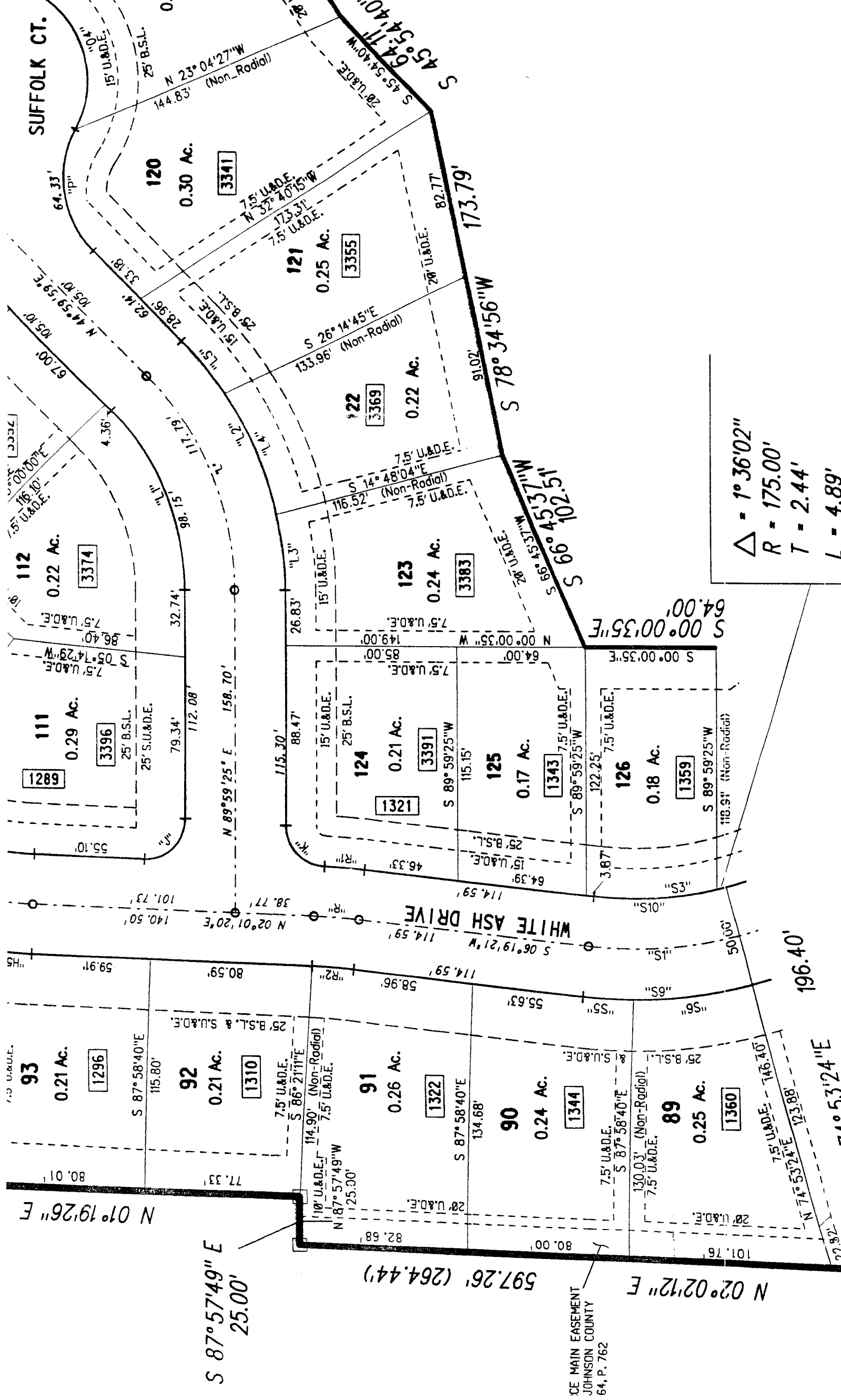


G.E. & N.E. Coy  
DR 137, PG. 295

W.D. & J.K. Neff  
DR. 137 PG. 297







$\Delta = 1^{\circ}36'02''$   
 $R = 175.00'$   
 $T = 2.44'$   
 $L = 4.89'$

ICE MAIN EASEMENT  
 JOHNSON COUNTY  
 64, P. 762

SUFFOLK CT.

WHITE ASH DRIVE

N 01°19'26" E

S 87°57'49" E  
25.00'

597.26' (264.44')

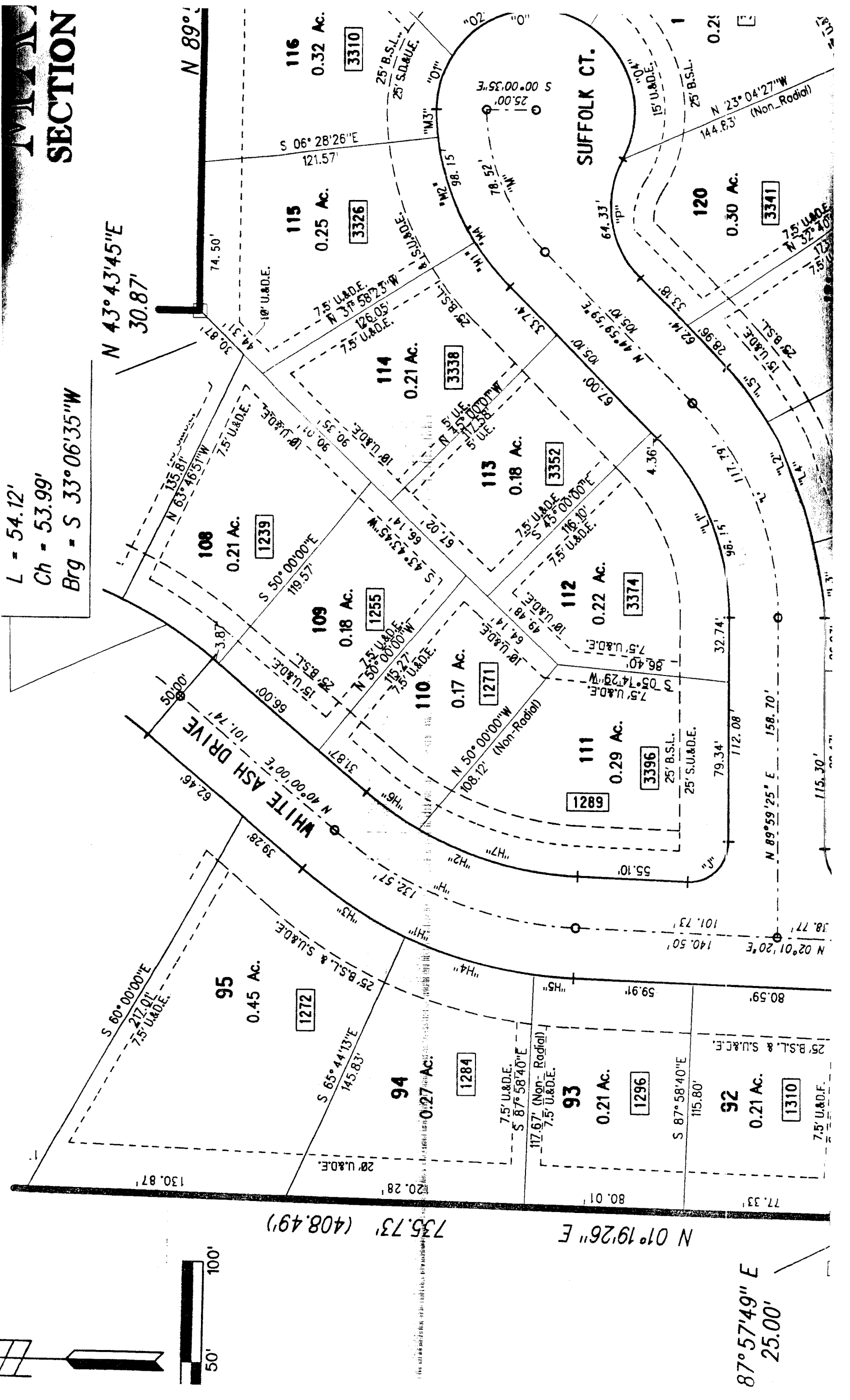
N 02°02'12" E

196.40'

N 74°53'24" E  
123.88'

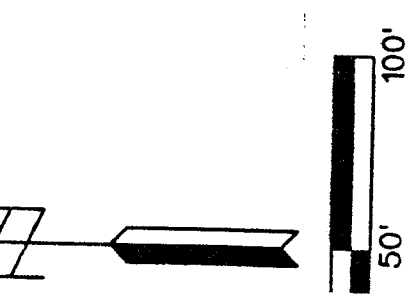
93 0.21 Ac. 1296  
 92 0.21 Ac. 1310  
 91 0.26 Ac. 1322  
 90 0.24 Ac. 1344  
 89 0.25 Ac. 1360  
 111 0.29 Ac. 3396  
 112 0.22 Ac. 3374  
 124 0.21 Ac. 1321  
 125 0.17 Ac. 1343  
 126 0.18 Ac. 1359  
 121 0.25 Ac. 3355  
 122 0.22 Ac. 3369  
 123 0.24 Ac. 3383  
 120 0.30 Ac. 3341





**SECTION**

L = 54.12'  
 Ch = 53.99'  
 Brg = S 33° 06' 35" W



N 43° 43' 45" E  
 30.87'

N 89°

N 01° 19' 26" E 735.73' (408.49)'

87° 57' 49" E  
 25.00'

WHITE ASH DRIVE

SUFFOLK CT.

108

0.21 Ac.

1239

109

0.18 Ac.

1255

110

0.17 Ac.

1271

111

0.29 Ac.

1288

112

0.22 Ac.

3374

113

0.18 Ac.

3352

114

0.21 Ac.

3338

115

0.25 Ac.

3326

116

0.32 Ac.

3310

120

0.30 Ac.

3341

92

0.21 Ac.

1310

93

0.21 Ac.

1296

94

0.27 Ac.

1284

95

0.45 Ac.

1272



# 14.334 ACRES

