

DELBERT A. HOBSON  
PROFESSIONAL ENGINEER  
REGISTRATION NO. 2702  
MOORESVILLE, IND.

NW Corner  
Sec. 30  
T 12 North  
R 1 East

FINAL PLAT  
of  
FINE HILL

Part of the NW 1/4 of the NW 1/4 of Section 25  
Township 12 North, Range 1 West  
Morgan County, Indiana

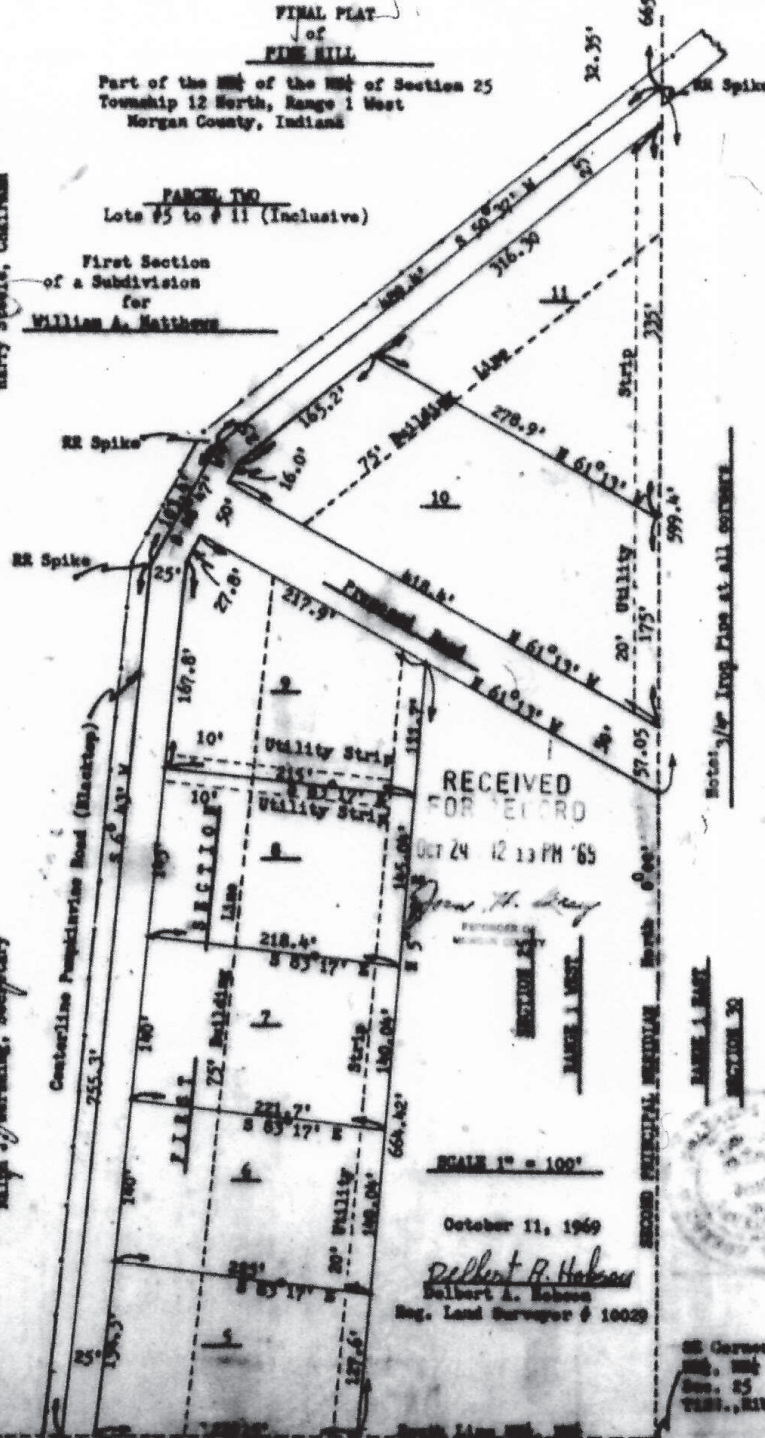
PANEL TWO  
Lots 75 to # 111 (Inclusive)

First Section  
of a Subdivision  
for  
William A. Matthews

**CERTIFICATE OF APPROVAL**  
Under Authority Provided by Chapter 17<sup>1/2</sup>, enacted by the General Assembly of the State of Indiana, and Ordinance adopted by the Board  
of County Commissioners of the County of Morgan, this plat was given approval by the County of Morgan as follows:  
Approved by the Morgan County Plan Commission at a meeting held this 13th day of October, 1969.

*Harry Steele*  
Harry Steele, Chairman

*Ralph J. Harding, Secretary*  
Ralph J. Harding, Secretary



RECEIVED  
FOR RECORD  
OCT 24 12 13 PM '69

SCALE 1" = 100'

October 11, 1969  
*Delbert A. Hobson*  
Delbert A. Hobson  
Reg. Land Surveyor # 10029



SW Corner  
Sec. 25  
T 12 N, R 1 E

Notes: 1/4" Iron Pins at all corners

SE Corner  
N1/4, N1/4  
Sec. 25  
T12N, R1E

DELBERT A. HOBSON  
PROFESSIONAL ENGINEER  
REGISTRATION NO 2702  
MOORESVILLE, IND.

BOOK 213 PAGE 309

**FINAL PLAT**  
of  
**PINE HILL**

Part of the N1/4 of Section 30  
Township 12 North, Range 1 East  
Morgan County, Indiana

Parcel One  
Lots 1 to 4 (Inclusive)

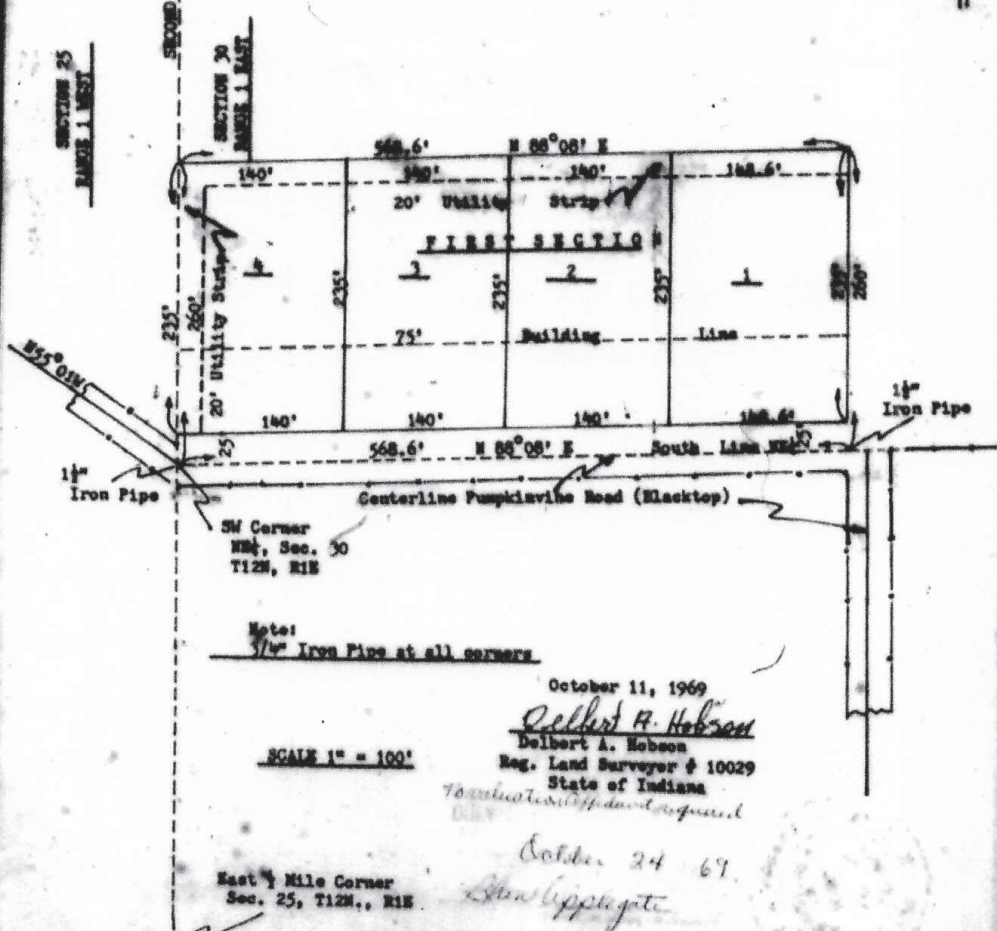
First Section  
of a Subdivision  
for  
William A. Matthews

**CERTIFICATE OF APPROVAL**

Under Authority Provided by Chapter 174, enacted by the General Assembly of the State of Indiana, and Ordinances adopted by the Board of County Commissioners of the County of Morgan, this plat was given approval by the County of Morgan as follows:  
Approved by the Morgan County Fire Commission at a meeting held this 13th day of October, 1969

*Ralph J. Worsching*  
Ralph J. Worsching

*Harry Steele*  
Harry Steele, Chairman



SW Corner  
N1/4, Sec. 30  
T12N, R1E

Note:  
1 1/2" Iron Pipe at all corners

October 11, 1969

*Delbert A. Hobson*  
Delbert A. Hobson  
Reg. Land Surveyor # 10029  
State of Indiana  
To certify to the Board of County Commissioners

SCALE 1" = 100'

East 1/4 Mile Corner  
Sec. 25, T12N., R1E

October 24 69.  
*Sam Applegate*



SE Corner  
NE1/4, NE1/4  
Sec. 25  
T12N., R1W

DELBERT A. HOBSON  
PROFESSIONAL ENGINEER  
REGISTRATION NO 2702  
MOORESVILLE, IND.

BOOK 225 PAGE 344  
Original Plat  
Book 213  
Page 309

REVISED  
FINAL PLAT,  
OF  
PINE HILL (lots one (1) to (4) inclusive)  
Part of the NE1/4 of Section 30  
Township 12 North, Range 1 East  
Morgan County, Indiana

Revised  
Plat  
4.18.72

Revised  
Parcel One  
Lots #1 to #4 (Inclusive)

First Section  
of a Subdivision  
for  
William A. Matthews

CERTIFICATE OF APPROVAL

Under Authority Provided by Chapter 174, enacted by the General Assembly of the State of Indiana, and Ordinance adopted by the Board of County Commissioners of the County of Morgan, this plat was given approval by the County of Morgan as follows:

Approved by the Morgan County Plan Commission at a meeting held this 14th day of December, 1970

*Stanford E. Miller*  
Stanford E. Miller, Secretary

*Claude Lumpkin*  
Claude Lumpkin, Chairman

RECEIVED FOR RECORD

The 18 day of April  
A. D. 1972 at 7:25 o'clock P. M.  
and recorded in Deed Record  
No. 225 Page 344

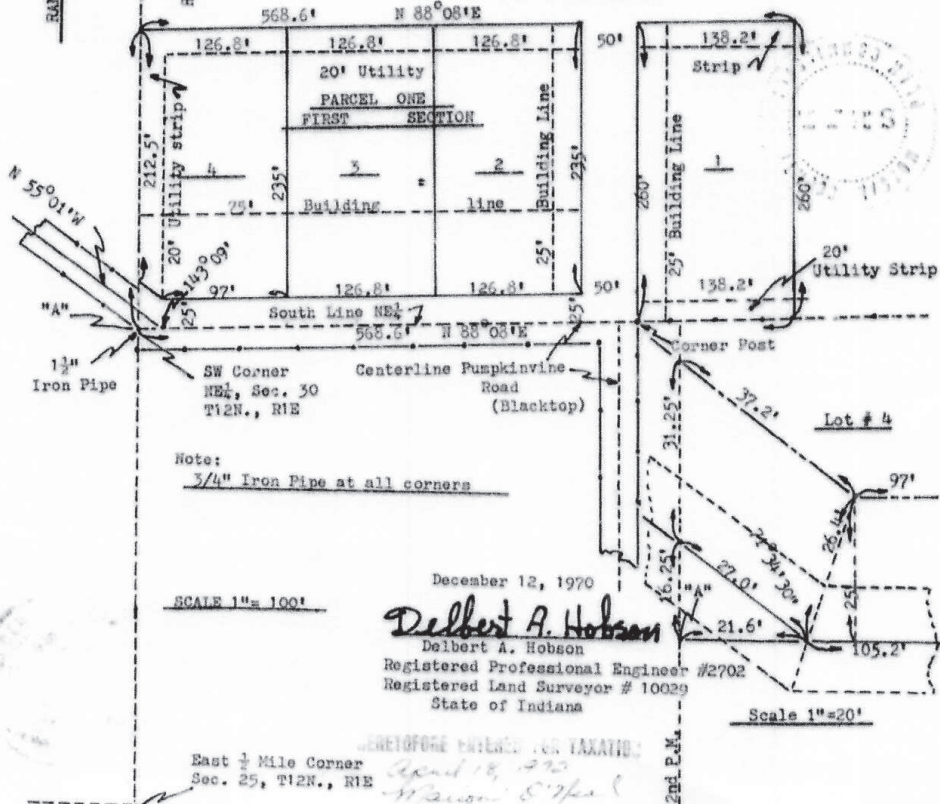
*Joan Gray*  
Recorder of Morgan County



SECTION 25  
RANGE 1 WEST

SECOND PRINCIPAL MERIDIAN North 0°00'

SECTION 30  
RANGE 1 EAST



Note:  
3/4" Iron Pipe at all corners

SCALE 1"=100'

December 12, 1970

*Delbert A. Hobson*  
Delbert A. Hobson  
Registered Professional Engineer #2702  
Registered Land Surveyor #10029  
State of Indiana

Scale 1"=20'

East 1/4 Mile Corner  
Sec. 25, T12N., R1E

GENETOPONE ENTERED FOR TAXATION:  
April 18, 1972  
Hobson 5/7/81

2nd P.M.