



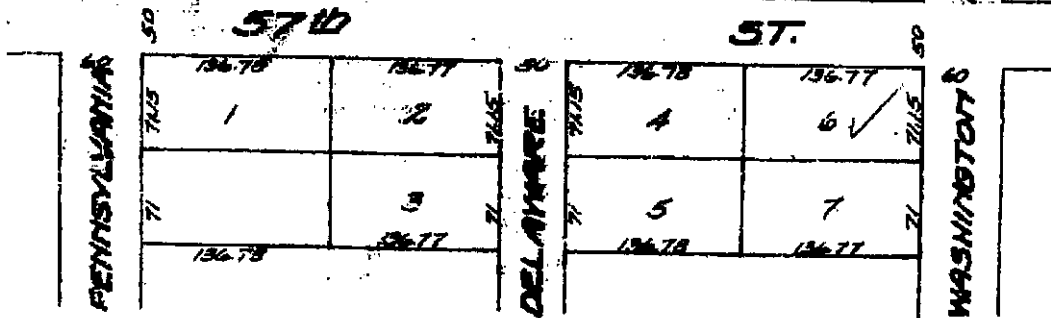
**Chicago Title Insurance Company
Indianapolis Metro Offices
Telephone # (317) 684-3800**

Plat Copy – No Covenants on plat

Resener-Brinkemer Resub

(Marion County, IN)

The materials made available here are for general information only and should NOT be relied upon for making any major or final decisions with respect to any of the properties referenced. The most current and up-to-date copies of Covenants, Restrictions or other Data relative to any property should be obtained from the current governing body of the Subdivision (generally the Home Owner's Association). Chicago Title makes NO representations or warranties with respect to any of the materials contained herein.



RESENER-BRINKMEYER RE-SUB.

The above plat of "Resener-Brinkmeyer Re-subdivision" represents a subdivision of all of lots 23-24-26 and the East 1/2 of lot 25, in Johnson Bros. Washington Boulevard Add. an addition to the City of Indianapolis, as recorded in Plat Book 14 Page 134 in the Recorders Office of Marion County, Indiana.

The size of lots and width of streets are shown on this plat in figures denoting feet and decimal parts thereof.

This subdivision consists of 7 lots numbered from 1 to 7 both inclusive.

The undersigned owners Edward H. Resener and Mary W. Resener his wife and Edward G. F. Brinkmeyer and Elizabeth W. Brinkmeyer his wife, hereby certify that they have laid off, platted and subdivided and do hereby lay off, plat and subdivide into lots and streets in accordance with the within plat as herein above shown.

This subdivision shall be known and designated as "Resener-Brinkmeyer Re-subdivision" an addition to the City of Indianapolis

Witness our signatures this 31st day of August 1927

Edward H. Resener

Edward G. F. Brinkmeyer

Mary W. Resener

Elizabeth W. Brinkmeyer

State of Indiana } s. s.
County of Marion }

Personally appeared before me the undersigned a Notary Public in and for said County and State, Edward H. Resener and Mary W. Resener his wife and Edward G. F. Brinkmeyer and Elizabeth W. Brinkmeyer his wife and each acknowledged the execution of the foregoing certificate as their voluntary act and for the use and purpose herein expressed.

Witness my hand and notary seal this 31st day of August 1927

John Dillon

Notary Public

My commission expires March 16 1929

APPROVED THIS 1st DAY OF SEPTEMBER 1927

BOARD OF PUBLIC WORKS

CITY CIVIL ENGINEER

[Signature]

[Signature]

RESENER-BRINKMEYER RE-SUB.

The above plat of 'Resener-Brinkmeyer Re-subdivision' represents a subdivision of all of lots 23-24-26 and the East 1/2 of lot 25 in Johnson Bros. Washington Boulevard Add. an addition to the City of Indianapolis, as recorded in Plat Book 14 Page 134 in the Recorder's Office of Marion County, Indiana.

The size of lots and width of streets are shown on this plat in figures denoting feet and decimal parts thereof.

This subdivision consists of 7 lots numbered from 1 to 7 both inclusive.

The undersigned owners Edward H. Resener and Mary W. Resener his wife and Edward G. F. Brinkmeyer and Elizabeth W. Brinkmeyer his wife, hereby certify that they have laid off, platted and subdivided and do hereby lay off, plat and subdivide into lots and streets in accordance with the within plat as herein above shown.

This subdivision shall be known and designated as 'Resener-Brinkmeyer Re-subdivision' an addition to the City of Indianapolis.

Witness our signatures this 31st day of August 1927

Edward H. Resener
Mary W. Resener

Edward G. F. Brinkmeyer
Elizabeth W. Brinkmeyer

State of Indiana }
County of Marion } S.S.

Personally appeared before me the undersigned a Notary Public in and for said County and State, Edward H. Resener and Mary W. Resener his wife and Edward G. F. Brinkmeyer and Elizabeth W. Brinkmeyer his wife and each acknowledged the execution of the foregoing certificate as their voluntary act for the use and purpose herein expressed.

Witness my hand and notary seal this 31st day of August 1927

Tom L. Dillon
Notary Public

My commission expires March-16-1929

APPROVED

DATE

PLACES

PLACES

PLACES

PLACES

PLACES

PLACES

PLACES

PLACES

PLACES

PLACES

PLACES

PLACES

PLACES

PLACES

PLACES

PLACES

PLACES

PLACES

PLACES

PLACES

PLACES

PLACES

PLACES

PLACES

PLACES

PLACES

APPROVED

DATE

PLACES

PLACES

PLACES

PLACES

PLACES

PLACES

PLACES

PLACES

PLACES

PLACES

PLACES

PLACES

PLACES

PLACES

PLACES

PLACES

PLACES

PLACES

PLACES

PLACES

PLACES

PLACES

PLACES

PLACES

PLACES

PLACES

APPROVED

DATE

PLACES

PLACES

PLACES

PLACES

PLACES

PLACES

PLACES

PLACES

PLACES

PLACES

PLACES

PLACES

PLACES

PLACES

PLACES

PLACES

PLACES

PLACES

PLACES

PLACES

PLACES

PLACES

PLACES

PLACES

PLACES

PLACES