

LEGEND

- ☒ — INDICATES CONCRETE MONUMENT
- — INDICATES CENTERLINE MONUMENTATION
- BL — BUILDING LINE
- SF — SQUARE FOOTAGE
- D.U. & E. — DRAINAGE UTILITY AND SEWER EASEMENT
- D.E. — DRAINAGE EASEMENT

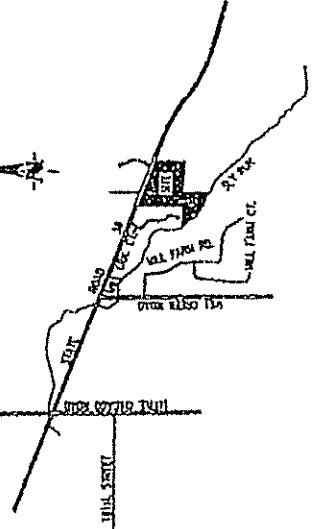
SETTLERS MILL

THIS INSTRUMENT WAS PREPARED BY EDWARD D. GIACOLETTI REGISTERED LAND SURVEYOR-INDIANA #50560. 3020 NORTH POST ROAD INDIANAPOLIS, INDIANA 46228 TELEPHONE (317) 898-8282

96-34469
P.C. No. 1
Book No. 106

SECTION 1 SECONDARY PLAT PART OF THE SE 1/4 OF SECTION 27-T9N-R4E PART OF THE SW 1/4 OF SECTION 26-T9N-R4E PART OF THE NE 1/4 OF SECTION 34-T9N-R4E HAMILTON COUNTY, INDIANA

VICINITY MAP
NOT TO SCALE



OWNER/SUBDIVIDER
M & N ENTERPRISES
15232 STONEY CREEK WAY
NOBLESVILLE, IN 46060
(971) 778-8871

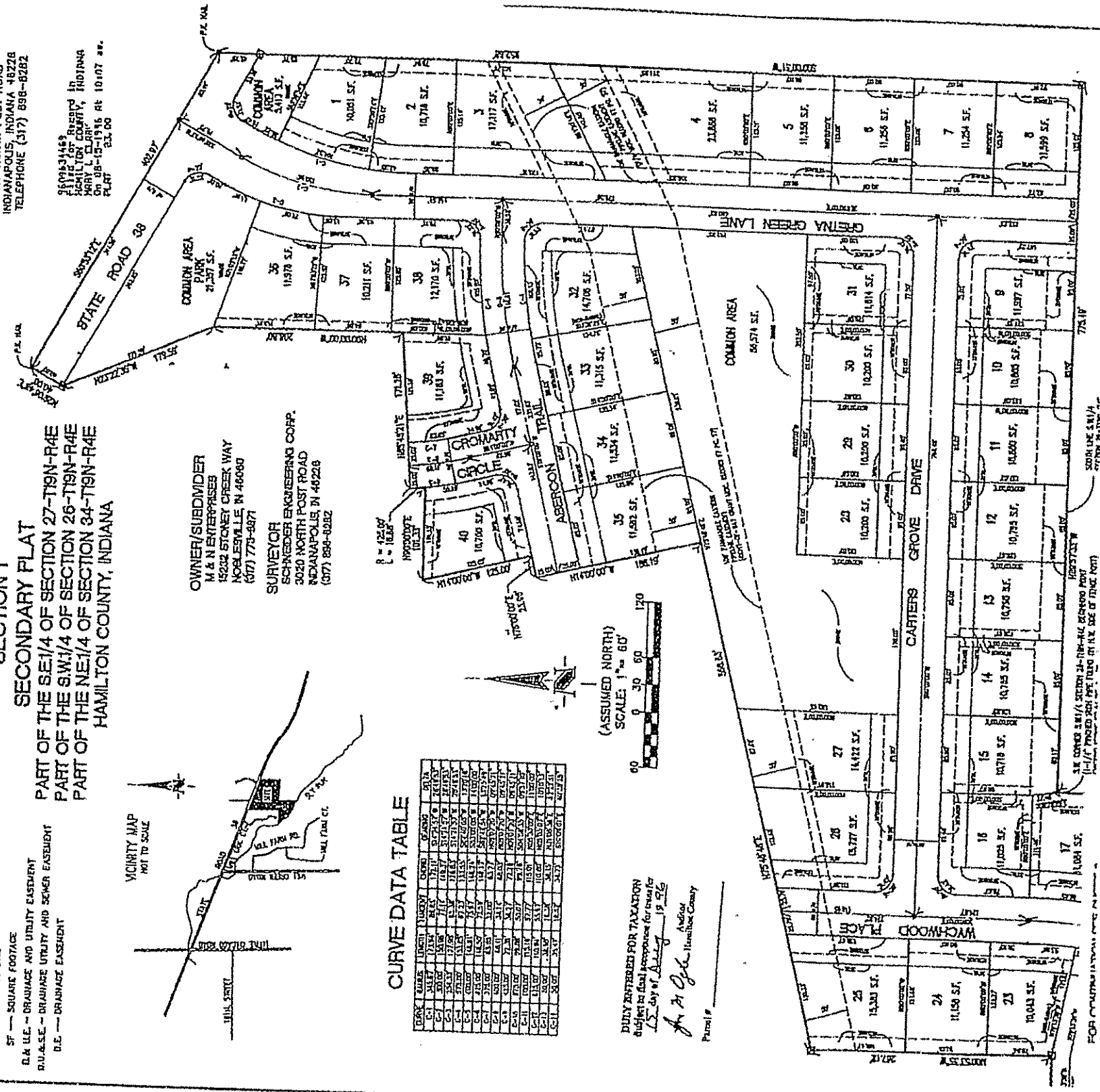
SURVEYOR
SCHNEIDER ENGINEERING CORP.
3020 NORTH POST ROAD
INDIANAPOLIS, IN 46228
(317) 898-8282

CURVE DATA TABLE

LINE	LENGTH	TWO POINT	CHORD	CHORD BEARING	CHORD ANGLE	CHORD AREA
C-1	10.000	10.000	10.000	0°00'00"	0°00'00"	0.000
C-2	10.000	10.000	10.000	0°00'00"	0°00'00"	0.000
C-3	10.000	10.000	10.000	0°00'00"	0°00'00"	0.000
C-4	10.000	10.000	10.000	0°00'00"	0°00'00"	0.000
C-5	10.000	10.000	10.000	0°00'00"	0°00'00"	0.000
C-6	10.000	10.000	10.000	0°00'00"	0°00'00"	0.000
C-7	10.000	10.000	10.000	0°00'00"	0°00'00"	0.000
C-8	10.000	10.000	10.000	0°00'00"	0°00'00"	0.000
C-9	10.000	10.000	10.000	0°00'00"	0°00'00"	0.000
C-10	10.000	10.000	10.000	0°00'00"	0°00'00"	0.000
C-11	10.000	10.000	10.000	0°00'00"	0°00'00"	0.000
C-12	10.000	10.000	10.000	0°00'00"	0°00'00"	0.000
C-13	10.000	10.000	10.000	0°00'00"	0°00'00"	0.000
C-14	10.000	10.000	10.000	0°00'00"	0°00'00"	0.000
C-15	10.000	10.000	10.000	0°00'00"	0°00'00"	0.000
C-16	10.000	10.000	10.000	0°00'00"	0°00'00"	0.000
C-17	10.000	10.000	10.000	0°00'00"	0°00'00"	0.000
C-18	10.000	10.000	10.000	0°00'00"	0°00'00"	0.000
C-19	10.000	10.000	10.000	0°00'00"	0°00'00"	0.000
C-20	10.000	10.000	10.000	0°00'00"	0°00'00"	0.000
C-21	10.000	10.000	10.000	0°00'00"	0°00'00"	0.000
C-22	10.000	10.000	10.000	0°00'00"	0°00'00"	0.000
C-23	10.000	10.000	10.000	0°00'00"	0°00'00"	0.000
C-24	10.000	10.000	10.000	0°00'00"	0°00'00"	0.000
C-25	10.000	10.000	10.000	0°00'00"	0°00'00"	0.000
C-26	10.000	10.000	10.000	0°00'00"	0°00'00"	0.000
C-27	10.000	10.000	10.000	0°00'00"	0°00'00"	0.000
C-28	10.000	10.000	10.000	0°00'00"	0°00'00"	0.000
C-29	10.000	10.000	10.000	0°00'00"	0°00'00"	0.000
C-30	10.000	10.000	10.000	0°00'00"	0°00'00"	0.000
C-31	10.000	10.000	10.000	0°00'00"	0°00'00"	0.000
C-32	10.000	10.000	10.000	0°00'00"	0°00'00"	0.000
C-33	10.000	10.000	10.000	0°00'00"	0°00'00"	0.000
C-34	10.000	10.000	10.000	0°00'00"	0°00'00"	0.000
C-35	10.000	10.000	10.000	0°00'00"	0°00'00"	0.000
C-36	10.000	10.000	10.000	0°00'00"	0°00'00"	0.000
C-37	10.000	10.000	10.000	0°00'00"	0°00'00"	0.000
C-38	10.000	10.000	10.000	0°00'00"	0°00'00"	0.000
C-39	10.000	10.000	10.000	0°00'00"	0°00'00"	0.000
C-40	10.000	10.000	10.000	0°00'00"	0°00'00"	0.000
C-41	10.000	10.000	10.000	0°00'00"	0°00'00"	0.000
C-42	10.000	10.000	10.000	0°00'00"	0°00'00"	0.000
C-43	10.000	10.000	10.000	0°00'00"	0°00'00"	0.000
C-44	10.000	10.000	10.000	0°00'00"	0°00'00"	0.000
C-45	10.000	10.000	10.000	0°00'00"	0°00'00"	0.000
C-46	10.000	10.000	10.000	0°00'00"	0°00'00"	0.000
C-47	10.000	10.000	10.000	0°00'00"	0°00'00"	0.000
C-48	10.000	10.000	10.000	0°00'00"	0°00'00"	0.000
C-49	10.000	10.000	10.000	0°00'00"	0°00'00"	0.000
C-50	10.000	10.000	10.000	0°00'00"	0°00'00"	0.000

(ASSUMED NORTH)
SCALE: 1" = 60'

DULY ENTERED FOR TAXATION
Subject to final acceptance for transfer
LS Day of July 19 2016
Edward D. Giacoletti
Surveyor
Hamilton County



FOR CONTINUED INFORMATION SEE PLAT