

Rev 8-21-94  
 This document is submitted to an account No. 9413201

This document referred to in Document No. 9322381  
 Rev 5-10-93  
 LOTS 1-26  
 Drainage easement in Santee Sewer

This document referred to in Document No. 9359039  
 Rev 11-30-93  
 Drainage easement

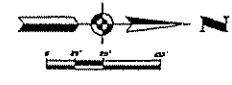
This document referred to in Document No. 9338185  
 Rev. 8-10-93

Curve	Delta	Radius	Tangent	Arc	Chord	Chord Bearing
A	90°00'00"	175.00'	175.00'	175.55'	176.18'	N. 45°00'00"E
B	90°00'00"	150.00'	150.00'	150.61'	151.15'	N. 45°00'00"E
C	90°00'00"	175.00'	175.00'	174.89'	174.48'	N. 45°00'00"E
D	45°11'48"	195.00'	77.15'	142.87'	145.61'	N. 17°50'14"E
E	55°41'41"	160.31'	57.69'	111.11'	108.50'	N. 15°51'17"W
F	10°41'43"	195.31'	66.91'	118.44'	115.69'	N. 89°51'21"W
G	59°41'43"	110.37'	75.99'	105.77'	101.87'	N. 10°51'21"W
H	67°08'10"	103.11'	111.59'	114.70'	102.61'	N. 53°58'15"W
I	67°08'10"	158.11'	105.00'	185.40'	174.57'	N. 53°58'15"W
J	67°08'10"	135.11'	105.11'	187.59'	174.59'	N. 53°58'15"W
K	67°17'10"	131.53'	88.54'	155.83'	147.61'	N. 53°21'18"W
L	67°17'10"	121.53'	105.00'	185.15'	174.71'	N. 53°21'18"W
M	67°17'10"	182.53'	111.66'	214.61'	202.47'	N. 53°21'18"W
N	11°51'40"	390.54'	69.11'	154.62'	152.78'	N. 11°51'40"E
O	11°51'40"	365.54'	73.21'	144.53'	142.69'	N. 11°51'40"E
P	11°51'40"	390.54'	78.21'	154.40'	152.40'	N. 11°51'40"E
Q	11°51'40"	174.51'	55.00'	108.50'	107.61'	N. 11°51'40"E
R	11°51'40"	144.51'	50.00'	98.70'	98.05'	N. 11°51'40"E
S	11°51'40"	214.51'	95.00'	168.63'	168.59'	N. 11°51'40"E

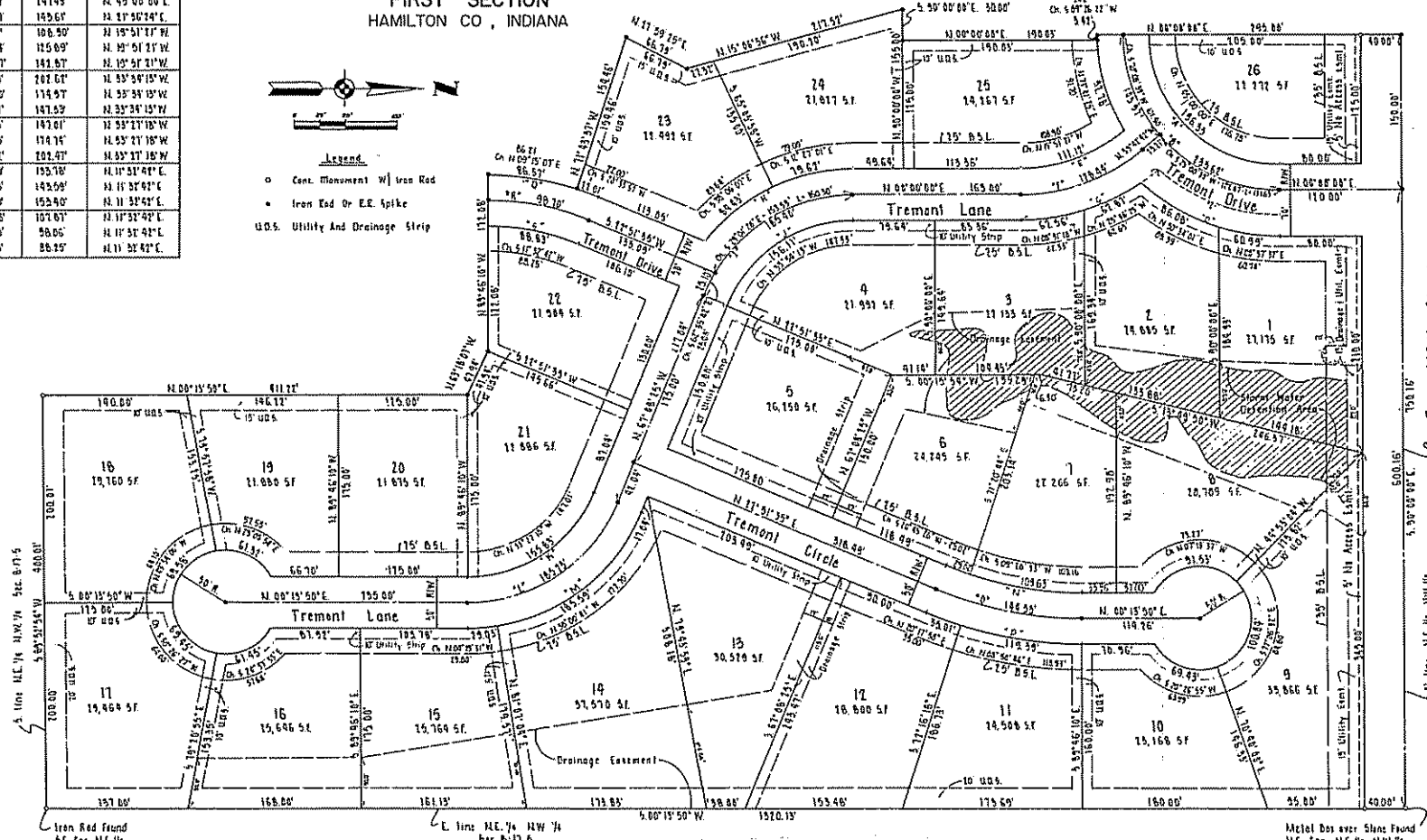
# TREMONT

## FIRST SECTION

HAMILTON CO, INDIANA



- Legend**
- Cent. Monument W/ Iron Rod
  - Iron Rod Or E.E. Spike
  - U.D.S. Utility And Drainage Strip



PART OF THE NORTHEAST QUARTER OF THE NORTHEAST QUARTER OF SECTION 8, TOWNSHIP 13 NORTH, RANGE 5 EAST OF THE SIXTH PRINCIPAL MERIDIAN RECORDED AS FOLLOWS:

BEARING ALONG THE NORTHEAST CORNER OF THE SAID QUARTER SECTION; THENCE SOUTH 80 DEGREES 13 MINUTES 50 SECONDS WEST ON AND ALONG THE EAST LINE TRENOM LANE 115.00 FEET TO THE CORNER OF THE SAID QUARTER SECTION; THENCE SOUTH 80 DEGREES 13 MINUTES 50 SECONDS WEST ON AND ALONG THE SOUTH LINE TRENOM LANE 115.00 FEET; THENCE NORTH 80 DEGREES 13 MINUTES 50 SECONDS EAST ALL IN FEET; THENCE NORTH 80 DEGREES 13 MINUTES 50 SECONDS WEST 47.96 FEET; THENCE NORTH 80 DEGREES 13 MINUTES 50 SECONDS WEST 175.00 FEET; THENCE NORTHWESTERLY 1/4 OF A CURVE TO THE SAID MERIDIAN; SAID A RADIUS OF 274.91 FEET & CHORD BEARING OF 86°57' FEET; SAID CHORD BEING IDENTICAL TO A CHORD BEARING NORTH 07 DEGREES 13 MINUTES 50 SECONDS EAST 66.21 FEET; THENCE NORTH 17 DEGREES 13 MINUTES 50 SECONDS WEST 134.42 FEET; THENCE NORTH 87 DEGREES 13 MINUTES 50 SECONDS EAST 66.21 FEET; THENCE NORTH 13 DEGREES 50 SECONDS WEST 217.32 FEET; THENCE SOUTH 80 DEGREES 13 MINUTES 50 SECONDS EAST 20.00 FEET; THENCE NORTH 80 DEGREES 13 MINUTES 50 SECONDS WEST 190.00 FEET; THENCE SOUTHWESTERLY ON A CURVE TO THE SOUTH MERIDIAN HAS A RADIUS OF 175.00 FEET & CHORD BEARING OF 24.42 FEET; SAID CHORD BEING IDENTICAL TO A CHORD BEARING SOUTH 22 DEGREES 13 MINUTES 50 SECONDS WEST 24.42 FEET; THENCE NORTH 0 DEGREES 13 MINUTES 50 SECONDS EAST 200.00 FEET TO THE NORTH LINE OF THE SAID QUARTER SECTION; THENCE SOUTH 80 DEGREES 13 MINUTES 50 SECONDS EAST ON AND ALONG THE SAID NORTH LINE 700.00 FEET TO THE POINT OF BEGINNING CONTAINING 10.00 ACRES, MORE OR LESS.



CERTIFICATE OF LAND SURVEYOR

I, DANIEL L. MURRAY, SURVEYOR, HEREBY CERTIFY THAT I AM A LAND SURVEYOR, LICENSED IN COMPLIANCE WITH THE LAWS OF THE STATE OF INDIANA THAT THIS PLAT CORRECTLY REPRESENTS A CORNER COMPLETED BY ME ON JUNE 23, 1987.

Daniel L. Murray  
 DANIEL L. MURRAY, L.S., No. 58088

THIS INSTRUMENT PREPARED BY FRANKLIN ENGINEERING COMPANY

874388  
 RECEIVED FOR RECORD  
 AT 11:45 O'CLOCK A.M.

OCT 2 1987  
 300K 14 PAGE 112-113  
 Frank H. Chapp  
 RECORDED HAMILTON COUNTY

DULY ENTERED FOR TAXATION  
 2 day October 1987  
 Betty Pearce Auditor  
 Hamilton County

Parcel #

